

ARLEN NESS® BIG SUCKER® AIR CLEANER KIT FOR INDIAN MOTORCYCLE



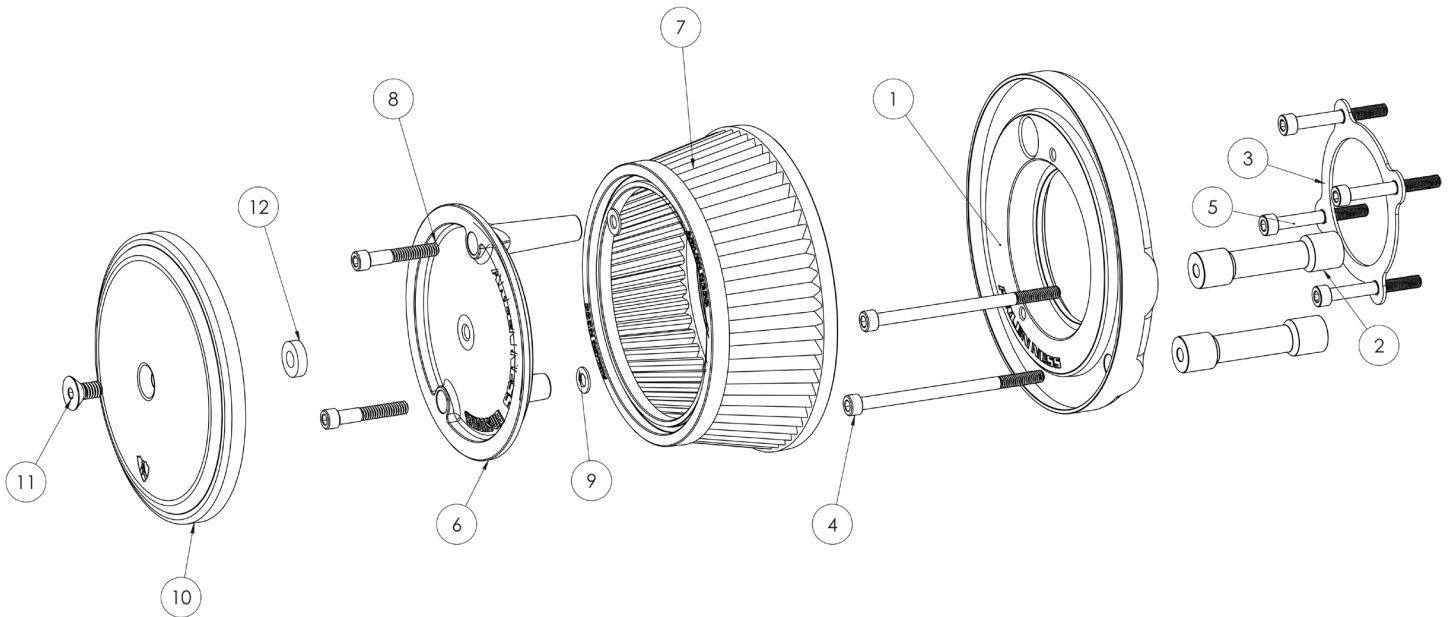
PART# 800-000 / 800-001 FITMENT: THUNDERSTROKE ENGINES

BEFORE YOU BEGIN INSTALLATION

Before installing the new Arlen Ness® air cleaner. Please refer to your factory service manual for instruction on removing the factory air box / intake assembly.

AIR CLEANER KIT CONTENTS

- > Air Cleaner Backing Plate (1)
- > Performance Air Filter (1)
- > Air Filter Top Plate (1)
- > Backing Plate Stand Offs / Spacers (2)
- > M6 x 100mm Allen Bolts (2)
- > 5/8" Breather Hose (1)
- > 1/2" to 5/8" Breather Hose Adapter (1)
- > #12 Flat Washer (2)
- > Smooth Outer Air Cleaner Cover
- > Outer Cover Bolt w/ Nylon Spacer (1)
- > Intake Gasket (1)

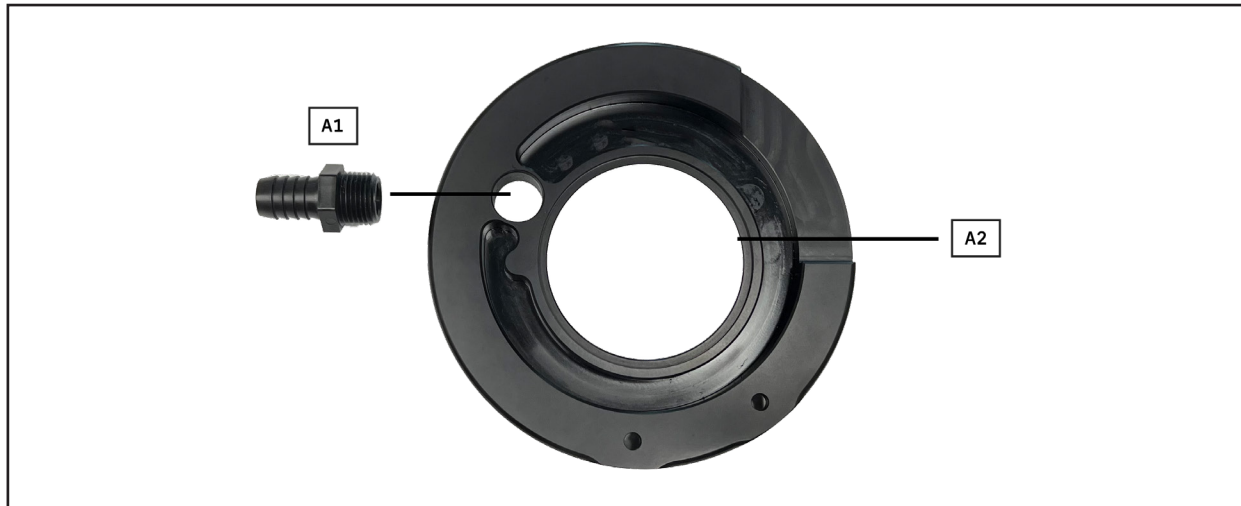


STEP 1:

- > Remove the factory air cleaner assembly & breather tubes per your OEM service manual
- > Be sure carefully remove & KEEP the factory throttle body rubber o-ring / seal

STEP 2:

- > Take the supplied air cleaner backing plate and install the 1/2" to 5/8" breather hose adapter into the back of the backing plate (see A1 in below image)
- > Install factory throttle body rubber o-ring / seal into recess in the center of the backside of backing plate (see A2 in below image)



STEP 3:

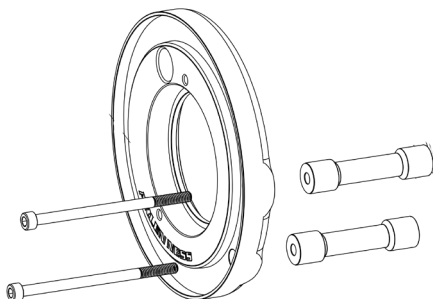
- > Install the factory throttle body (see service manual if needed) using the supplied M6 x 50mm bolts (4). Be sure to use supplied intake gasket between throttle body & intake manifold when installing
- > Use blue or medium strength locktite & torque all (4) bolts on throttle body to 8 ft-lbs

STEP 4:

- > Lube the OEM throttle body o-ring that is now in backing plate, then install backing plate onto throttle body by firmly pressing against the opening. Be sure center of backing plate is lined up properly with opening of throttle body

STEP 5:

- > Install the (2) backing plate stand-offs behind backing plate using supplied (2) M6 x 100mm bolts. Torque bolts to 8 ft-lbs (blue locktite)



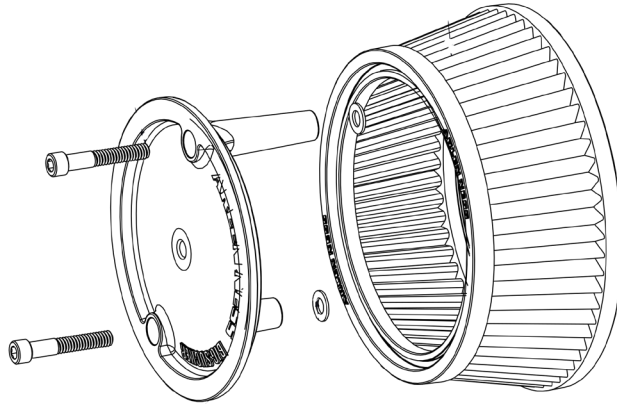
STEP 6:

- > Route the provided breather tube from the engines breather port to the back of the backing plate. Attach hose to the breather hose adapter previously installed onto the backing plate in STEP 2



STEP 7:

- > Install the provided performance air filter, make sure filter properly sits in the recess on face of backing plate
- > Use the supplied air filter top plate to secure the air filter to the backing plate. Use the supplied 1/4-20 x 1.5" allen bolts (2) & supplied #12 AN washers
- > Place the washers (2) between the filter top plate & backing plate, install 1/2-20 bolts (2) and torque to 8-10 ft-lbs using blue thread locktite



STEP 8:

- > Install the air cleaner outer cover by using the supplied spacer & flathead style bolt. Be sure to have the spacer between the filter top plate & outer cover
- > Torque air cleaner cover bolt to 2 ft-lbs using blue threadlocker

