

BARNETT Scorpion™



Refer to Factory Service Manual for:

- All Safety Instructions
- Removal/ Installation Instructions
- Proper Tools and Pullers
- Torque and Lubrication Specifications

Installation Guide

608-30-10009, 608-30-10011,
608-30-10017, 608-30-10098

Removing The Existing Clutch

Note:

A hydraulic press is required to remove OEM clutch hub and install the Barnett Scorpion clutch hub!

Barnett Tool and Engineering recommends changing primary lubricant after the first 500 miles and every 5,000 miles thereafter.

1. To protect against accidental shock or start up. Disconnect both battery cables.
2. Remove primary drain plug at bottom of primary.
3. Remove foot pegs (shifter lever) floorboard etc.
4. Remove (5) five screws to remove inspection cover from primary chain cover.
5. Remove (13) thirteen socket set screws with washers from primary cover. Remove primary cover.
6. Refer to your Factory Manual to remove clutch basket and associated components using proper safety Instructions, proper tools, and pullers.
7. A hydraulic press is required to remove OEM clutch hub & install the Barnett Scorpion clutch hub.
8. Using a hydraulic press remove the OEM clutch hub from the clutch basket. Firmly support the OEM basket as shown during this operation. After pressing the hub out; check the bearing for smoothness. If the bearing feels rough or binds, it must be replaced. Refer to photo 1.

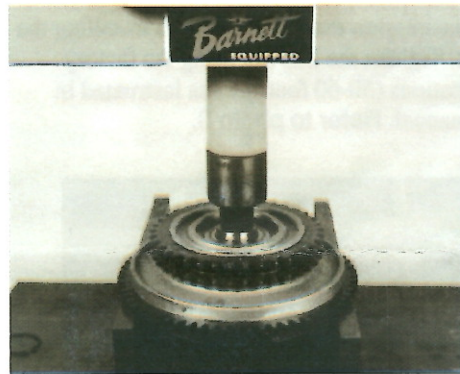


Photo 1

Installing Your Scorpion™ Clutch

1. Using a press install the Barnett Scorpion Clutch hub into the OEM clutch hub basket. Securely support the inner bearing races during this process. Carefully bottom the Scorpion Clutch hub in the OEM basket. After pressing the Barnett Scorpion hub, check the bearing for smoothness again! Refer to photo 2.

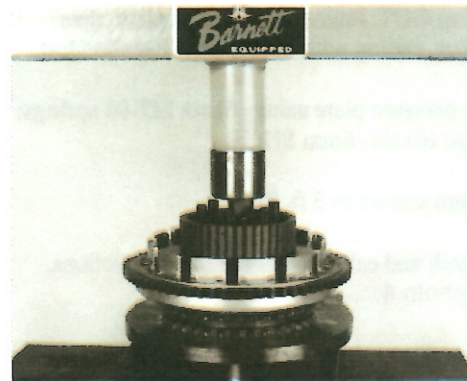
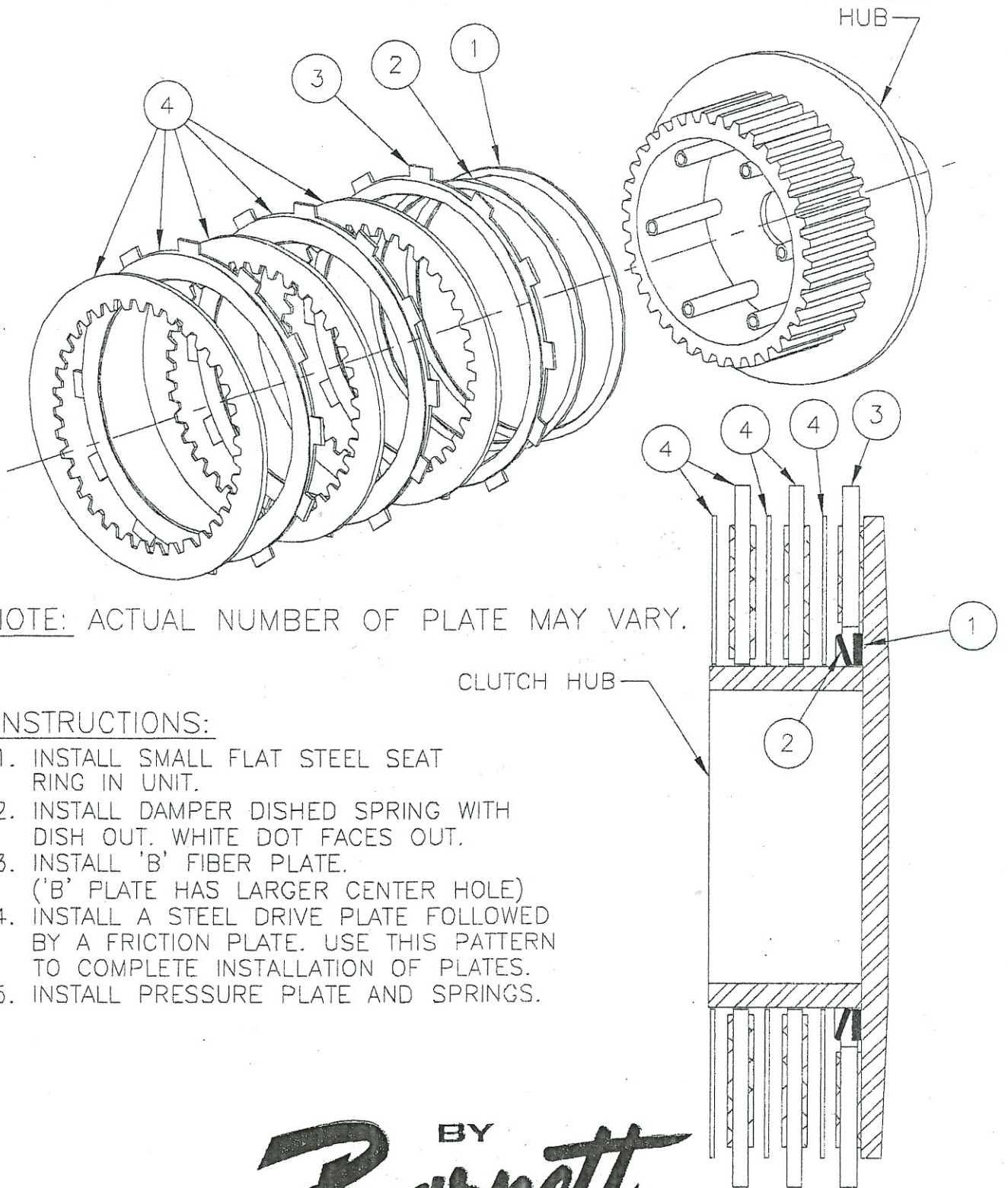


Photo 2

(Continued on back)

INSTALLATION OF DAMPER SPRING/SEAT



NOTE: ACTUAL NUMBER OF PLATE MAY VARY.

INSTRUCTIONS:

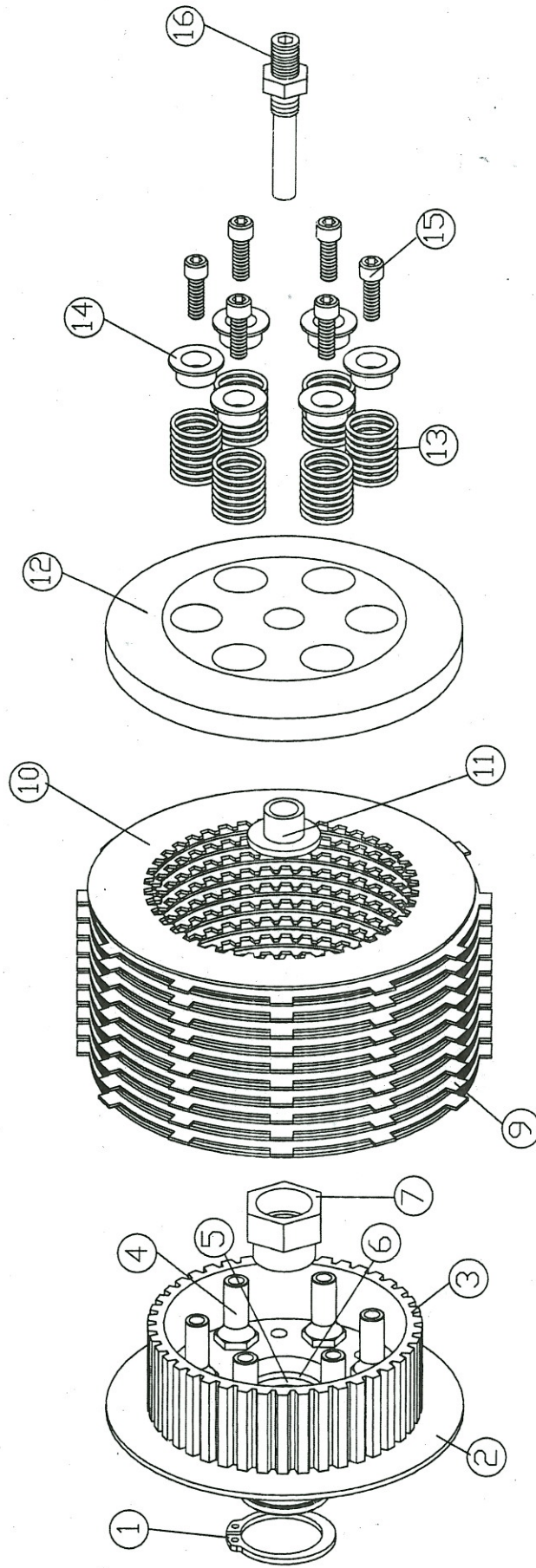
1. INSTALL SMALL FLAT STEEL SEAT RING IN UNIT.
2. INSTALL DAMPER DISHED SPRING WITH DISH OUT. WHITE DOT FACES OUT.
3. INSTALL 'B' FIBER PLATE. ('B' PLATE HAS LARGER CENTER HOLE)
4. INSTALL A STEEL DRIVE PLATE FOLLOWED BY A FRICTION PLATE. USE THIS PATTERN TO COMPLETE INSTALLATION OF PLATES.
5. INSTALL PRESSURE PLATE AND SPRINGS.

BY
Barnett

2238 PALMA DRIVE, VENTURA, CA 93003-5733, PHONE: (805) 642-9435 FAX: (805) 642-9436
<http://www.barnettclutches.com>

SCORPION BILLET CLUTCH ASSEMBLY

608-30-10017



No.	QTY.	PART #.	DESCRIPTION	No.	QTY.	PART #.	DESCRIPTION
1	1	201011	HEAVY DUTY SNAP RING	10	3	204031	STEEL DRIVE PLATES
2	1	606-30-10912	CLUTCH HUB	11	1	201013	THREADED INSERT (INSTALLED)
3	1	209003	CLUTCH DISK SPLINE	12	1	204004	CLUTCH PRESSURE PLATE
4	6	606-30-10915	CLUTCH PACK STUD	13	6	MT-7	CLUTCH SPRING (GOLD) 58 Lbs.
5	2	201006	SHAFT POSITION WASHER Installed	13	6	MT-23	CLUTCH SPRING (GREEN) 82 Lbs.
6	1	201007	BELLVILLE WASHER Installed	14	6	MT-90	SPRING CUP
7			OEM NUT	15	6	201012	6mm x20 mm SHCS
9	9	204020	FRICITION PLATES	16	1	201009	CLUTCH ADJ. SCREW & NUT 2½ Lg
10	6	204036	STEEL DRIVE PLATES				

**SCORPION BILLET CLUTCH
BILL OF MATERIALS**

QTY.	NEW #	OLD PART #	DESCRIPTION
1	606-30-10912		CLUTCH HUB
1	606-30-10903	209003	CLUTCH DISK SPLINE
1	606-30-10404	204004	CLUTCH PRESSURE PLATE
1	606-30-10113	201013	THREADED INSERT (INSTALLED IN PRESSURE PLATE)
1	606-30-10109	201009	CLUTCH ADJUSTMENT SCREW 2.50" LONG
1	606-30-10114	201014	7/16-20 JAM NUT (INSTALLED ON ADJUSTMENT SCREW)
6	606-30-10915		CLUTCH PACK STUD
2	606-30-10106	201006	SHAFT POSITION WASHER
1	606-30-10107	201007	BELLVILLE WASHER
1	606-30-10111	201011	HEAVY DUTY SNAP RING
6	519-99-06090	MT-90	SPRING CUP
6	606-30-10112	201012	6mm X 1 X 20mm SOCKET HEAD CAP SCREW
1	501-57-06007	MT-7-6	CLUTCH SPRINGS (GOLD) 58 LBS @ 1"
1	501-82-06023	MT-23-6	CLUTCH SPRINGS (GREEN) 82 LBS @ 1"
1	501-99-06091	MT-91-6	CLUTCH SPRINGS (RED) 100 LBS @ 1"
1	506-00-21458	204058	DAMPER SPRING
1	506-00-22478		DAMPER SPRING SEAT (.078)

CLUTCH PACK STACK HEIGHT (1.800-1.810)

1	301-32-11421		KEVLAR FRICTION "B" PLATE (.130)
8	301-32-10421	204020	KEVLAR FRICTION PLATES (.130)
3	401-32-047431	204031	STEEL DRIVE PLATE (.047)
6	401-32-078436	204036	STEEL DRIVE PLATE (.078)
1	306-32-10443	204040	KEVLAR REPLACEMENT CLUTCH KIT FRICTION PLATES & STEELS

BARNETT SCORPION TOOLS THAT ARE ALSO AVAILABLE

638-30-70001	201016	SCORPION CLUTCH HUB PULLER (FITS ALL SCORPION BIG TWINS & 84 & LATER SPORTSTER)
638-30-80098	204017	SCORPION CLUTCH HUB LOCK UP TOOL (FITS 98 & LATER BIG TWINS AND 84 TO 90 4 SPEED SPORTSTER SCORPION CLUTCH KITS)



Barnett Tool & Engineering, 2238 Palma Drive, Ventura CA 93003-5733
Phone 805-642-9435 • FAX 805-642-9436 • www.barnettclutches.com