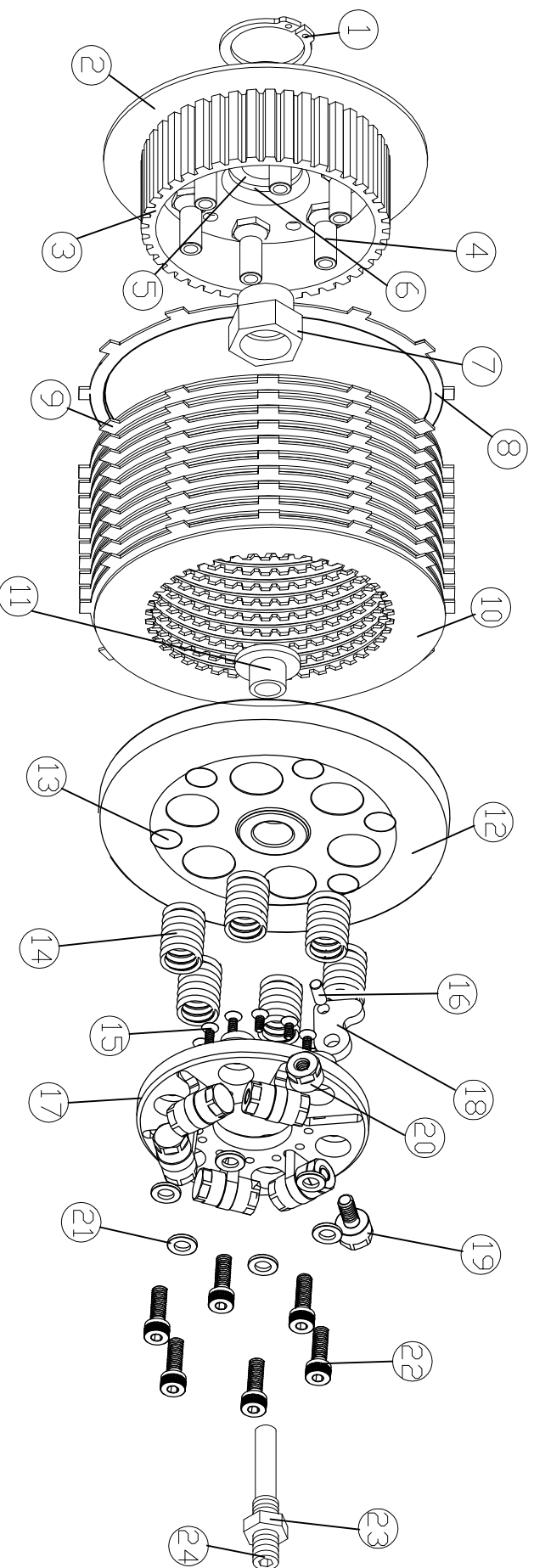


LOW PROFILE SCORPION LOCK-UP CLUTCH

2011-UP BIG TWINS

608-30-23100



| No. | QTY. | PART #. | DESCRIPTION | No. | QTY. | PART #. | DESCRIPTION |
|-----|------|---------------|-------------------------------------|-----|------|--------------|--|
| 1 | 1 | 606-30-10111 | HEAVY DUTY SNAP RING | 14 | 6 | MT-95 | CLUTCH SPRING (GOLD) 42 Lbs. |
| 2 | 1 | 606-30-10121 | CLUTCH HUB | 14 | 6 | MT-7 | CLUTCH SPRING (GOLD) 58 Lbs. |
| 3 | 1 | 606-30-10903 | CLUTCH DISK SPLINE | 14 | 6 | MT-23 | CLUTCH SPRING (GREEN) 82 Lbs. |
| 4 | 6 | 606-30-10905 | STUD CLUTCH PACK ASSEMBLY | 15 | 12 | | 6-32x 5/16 FHCS (INSTALLED) |
| 5 | 1 | 606-30-10106 | SHAFT POSITION WASHER (INSTALLED) | 16 | 6 | 600-30-89103 | 3/16 x 7/16 STEEL DOWELL PIN (INSTALLED) |
| 6 | 1 | 606-30-10107 | BELLEVILLE WASHER (INSTALLED) | 17 | 1 | 606-30-23785 | LOCK-UP HEAD |
| 7 | 1 | 606-30-10208 | OEM NUT (OPTIONAL) | 18 | 6 | 606-30-23853 | FINGERS LOCK-UP (INSTALLED) |
| 8 | 1 | 301-32-21421 | CARBON FIBER "B" PLATE | 19 | 6 | 600-30-95250 | 1/4-20 WEIGHT SCREW |
| 9 | 1 | 301-32-20421 | CARBON FIBER PLATES | 20 | 6 | 600-30-96250 | 1/4-20 WEIGHT NUT |
| 10 | 8 | 401-32-047431 | STEEL DRIVE PLATES | 21 | 6 | 600-30-02006 | M6 ALUMINUM FLAT WASHER |
| 11 | 1 | 606-30-10113 | THREADED INSERT (INSTALLED) | 22 | 6 | 600-30-71630 | 6mm x 1. x 30mm BLUE SHCS |
| 12 | 1 | 606-30-23851 | LOCK-UP CLUTCH PRESSURE PLATE | 23 | 1 | 606-30-10114 | 7/16-20 AM NUT (INSTALLED) ON ADJ. SCREW |
| 13 | 6 | 606-30-21057 | STAINLESS STEEL INSERTS (INSTALLED) | 24 | 1 | 606-30-10409 | CLUTCH ADJUSTMENT SCREW |