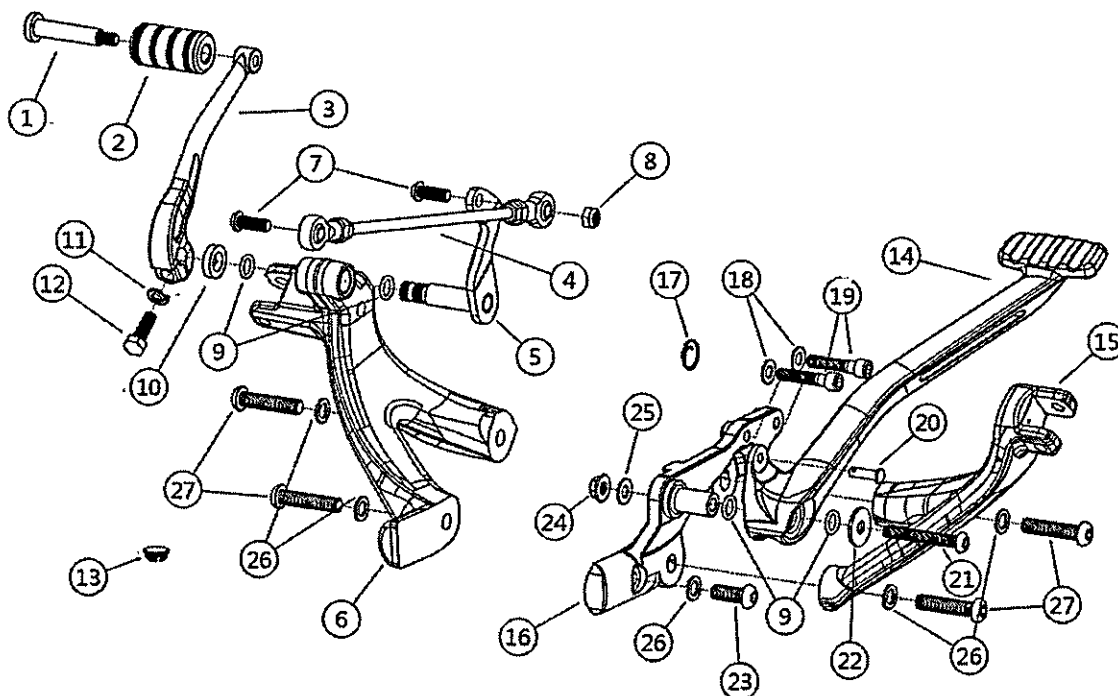


Forward controls kit Installation Instruction

Rev.A

Fits 18-later FXBB, FXLR, FXLRS and FXST models. Compatible with Original Equipment or Accessory Footpegs that fit those models.



ITEM	DESCRIPTION (QUANTITY)	Bag	ITEM	DESCRIPTION (QUANTITY)	Bag
1	Stud peg	-	14	Brake pedal	-
2	Rubber , toe peg , shifter	-	15	Right foot support bracket	-
3	Shifter lever	-	16	Brake pedal bracket	-
4	Shifter linkage rod	-	9	O-ring (2)	B
5	Shift rod lever	-	17	Cotter circle	B
6	Left foot support bracket	-	18	Washer , 5/8x7/16x1/16 in (2)	B
7	Socket head button screw , 5/16-24x7/8" (2)	A	19	Socket head cap screw , 5/16-18x1 1/2" (2)	B
8	Lock nut , 5/16-24	A	20	Rear brake clevis pin	B
9	O-ring (2)	A	21	Socket head button screw , 5/16-18x2 1/4"	B
10	Nylon washer	A	22	Washer , large	B
11	Lock washer	A	23	Socket head button screw , 3/8-16x1"	B
12	Hex head screw , 5/16-18x1"	A	24	Flange nut	B
13	Primary cover plug	A	25	Washer , small	B
			26	Washer , 5/8x7/16x1/16 in	B
			26	Washer , 5/8x7/16x1/16 in (4)	C
			27	Socket head button screw , 3/8-16x1 3/4" (4)	C

Item 1 to 13 (including Bag A) will be used for left side assemblies.

Item 9 & 14 to 26 (including Bag B) will be used for right side assemblies.

Item 26 - 27 (Which is Bag C) will be used for both left and right sides.