



Custom Dynamics® Dynamic LED Fork Reflectors Installation Instructions

We thank you for purchasing the Custom Dynamics® Dynamic LED Fork Reflectors. Our products utilize the latest technology and high quality components to ensure you the most reliable service. We offer one of the best warranty programs in the industry and we back our products with excellent customer support, if you have questions before or during installation of this product please call Custom Dynamics® at 1(800) 382-1388.

Part Numbers:

CD-FORK-BCM-AB CD-FORK-BCM-AC
CD-FORK-BCM-SB CD-FORK-BCM-SC

Package Contents:

- LED Fork Reflector (pair)
- BCM Adapter Harness (2)
- Wire Tie Wrap (10)
- Isopropyl Alcohol Wipe (1)



Batwing Fitment: 2014-2020 Harley-Davidson® Electra Glide Ultra Classic (FLHTCU), Electra Glide Ultra Classic Low (FLHTCUL), Ultra Limited (FLHTK), Ultra Limited Low (FLHTKL), Limited CVO™ (FLHTKSE), Street Glide (FLHX), Street Glide Special (FLHXS), Street Glide CVO™ (FLHXSE), and 2019-2020 Electra Glide Standard (FLHT). 2014-2020 Harley-Davidson® TriGlide® Models.

Instructions Page 1

Road Glide Fitment: 2015-2020 Road Glide (FLTRX), Road Glide Special (FLTRXS), Road Glide Limited (FLTRK), Road Glide Ultra (FLTRU), Road Glide CVO (FLTRXSE), Road Glide Ultra CVO (FLTRUSE)

Instructions Page 4



Please read all Information below before Installation

Warning: Disconnect negative battery cable from battery; refer to owner's manual. Failure to do so may result in electrical shock, injury, or fire. Secure negative battery cable away from positive side of battery and all other positive voltage sources on vehicle.

Safety First: Always wear appropriate safety gear including safety glasses when performing any electrical work. It is highly recommended that safety glasses be worn throughout this installation process. Be sure vehicle is on level surface, secure and cool.

Important: This product is designed and intended for use as auxiliary lighting only. It is NOT intended to replace any original equipment lighting installed on the vehicle and should not be used for that purpose. This product must be wired so that it does not interfere with any original equipment lighting.

Batwing Installation:

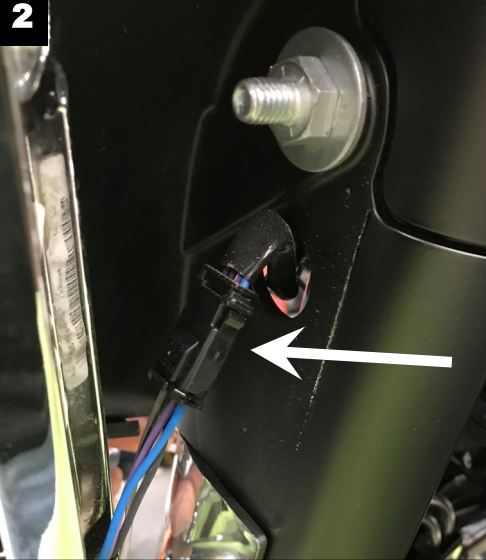
1. Remove the 1/2" nuts that secure the turn signal assembly to the fork shown in **Picture 1**. Pull assembly away from the fork to reveal the black wiring connector as shown in **Picture 2**.



2. Unplug the connector by pushing in on the tab located on the male side of the connection as shown in **Picture 3**. Push the tab and pull apart both sides at the same time. Remove the turn signal assembly from the bike completely.

Questions? Call us at: 1 (800) 382-1388 M-TH 8:30AM-5:30PM / FR 9:30AM-5:30PM EST

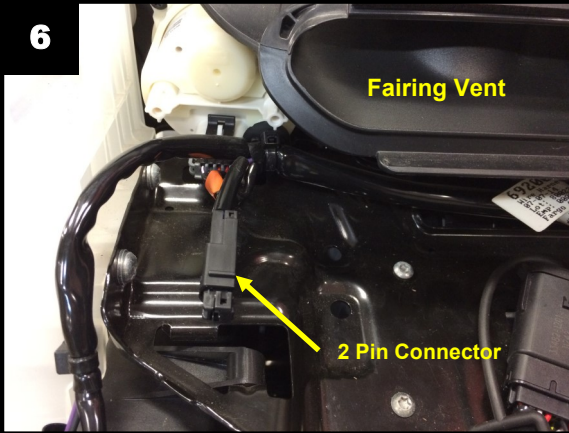
Installation Instructions - Page 2



3. Repeat steps 1 and 2 on the opposing side turn signal assembly.
4. Remove the 3 top T27 Torx Bolts from the outer fairing as shown in **Picture 4**. Remove the windshield and store it in a safe place for reinstallation later.
5. Reinstall the center T27 Torx Bolt only that was removed in Step 4. Lightly tighten the center bolt to secure the fairing while you remove the remaining 4 inner fairing bolts.
6. Remove the 2 T27 Torx bolts from the left and the right side of the inner fairing as shown in **Picture 5**. Save the bolts for reinstallation.
7. While standing in front of the bike and holding the fairing, remove the center outer fairing T27 Torx bolt and pull the fairing slightly away from the bike.
8. With the fairing slightly pulled away from the bike, disconnect the connector from the headlamp. Lay the fairing on a protected flat surface to prevent damage.
9. Using one of the BCM Adapter harnesses, Identify the Black male and female 4 pin JAE connectors with the Blue wire running between them. Plug the Black male JAE connector, with the Blue wire, into the female connector of the turn signal main wiring harness.
10. Push the Black female 4 pin JAE connector, with the Blue wire of the BCM Adapter harness through the hole in the front fork going out to the turn signal bracket.
11. Plug the Black 4 pin female JAE connector, with the Blue wire from the BCM Adapter harness into the turn signal harness, then reinstall the turn signal bracket onto the front fork and secure with the original nuts. Repeat for the other side.
12. Connect the White 2 pin female connector of the left side BCM Adapter Harness into the White male 2 pin connector of the right side BCM Adapter Harness.
13. Locate the Black 2 pin fairing Power and Accessory connector to the lower left (looking at the fairing) of the fairing vent. See **Photo 6**.
14. Remove the Black connector plug from the 2 pin fairing Power and Accessory connector on the motorcycle by pushing the center tab in and pulling the plug out. Save the plug for reinstallation later. See **Photo 7**.
15. Plug the White male 2 pin connector of the Left BCM Adapter Harnesses into the fairing Black 2 pin fairing Power and Accessory connector, ensure that it snaps in.
16. Install the Black plug removed in the step 14 into the White female 2 pin connector of the right BCM Adapter Harness.
17. Using the provided wire ties, secure both BCM Adapter Harnesses to prevent the wires from being damaged during fairing installation.
18. Remove the OEM fork reflector from the lower fork leg. Clean the reflector area removing any debris or tape from the OEM Reflector.
19. Wipe the reflector area down with the provided Isopropyl Alcohol Wipe and let dry.

Installation Instructions - Page 3.

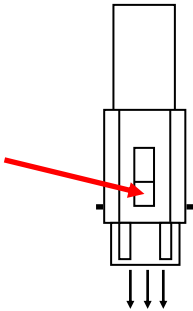
6



7

2 Pin Connector Plug

Plug Tab:
Push In



Installation:

20. Remove the protective red film from the back of the LED Fork Reflectors. Align the LED Fork Reflectors in the reflector area and press into place. The LED Fork Reflector should be mounted in the same location as the OEM reflector with the wire exiting the top, rear side of the light.
21. Route the wiring harness from each LED Fork Reflectors to the associated side BCM Adapter Harnesses in the fairing and connect to the Female JAE Connector.
22. Using the provided wire ties, secure the LED Fork Reflectors wiring harnesses to prevent the wires from being damaged.
23. Reinstall the fairing and windshield in the reverse order that it was removed. **NOTE: THE 4 INNER FAIRING BOLTS ARE TWO DIFFERENT LENGTHS!** The 2 longer bolts go in the top holes and the 2 shorter bolts go in the bottom holes of the inner fairing.
24. Reconnect the negative battery cable to the battery and reinstall the seat.
25. Perform a BCM sync by turning the ignition on, turn the 4 way hazards on, turn the ignition off. Allow the 4 way hazards to run for 3-4 minutes. Turn the ignition on. Turn the 4 way hazards off. Turn the ignition off.
26. Test operation of all lighting in all modes before riding.

Installation Instructions - Page 4.

Road Glide® Installation:

1. Remove the 4 windshield fasteners, **Picture 10**. Lift the windshield up to remove. Store the windshield in a safe place to prevent damage.

10



2. Once the windshield fasteners and windshield are removed, you will need to remove the vent. The vent is secured to the fairing by clips. Position yourself in the front of the motorcycle and lift straight up on the vent to release. Refer to **Photo 11**.

11



3. Locate both the left and right 3 pin turn signal connectors. Press down on the releasing tab of the JAE connector to disconnect. Refer to **Photo 12**.

12



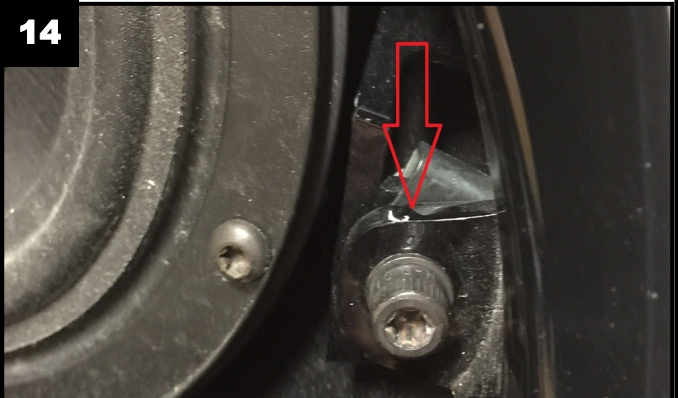
4. Remove the 3/16" socket Allen head bolts from the outside of each turn signal housing. Refer to **Photo 13**.

13



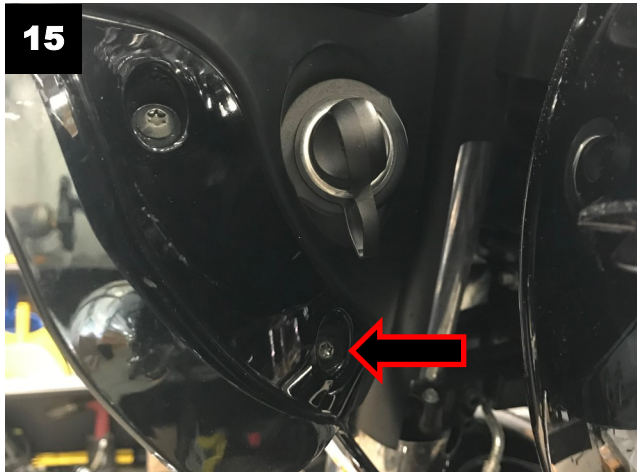
5. Remove both left and right speaker grilles on the inner fairing.
6. Once the speaker grilles are removed, Locate and remove the T-27 torx bolts in each corner of the speaker housing. Refer to **Photo 14**.

14



Installation Instructions - Page 5

7. Locate and remove the lower T-25 screw on each side of the inner fairing. Refer to **Photo 15**.



8. Remove the outer fairing and set to side.
9. Using one of the BCM Adapter harnesses, Identify the Black male and female 4 pin JAE connectors with the Blue wire running between them. Plug the Black male JAE connector, with the Blue wire, into the female connector of the turn signal main wiring harness.
10. Leave the Black female 4 pin JAE connector, with the Blue wire, of the BCM Adapter harness disconnected until the fairing is reinstalled. Repeat for the other side.
11. Connect the White 2 pin female connector of the left side BCM Adapter Harness into the White male 2 pin connector of the right side BCM Adapter Harness.



12. Locate the Black 2 pin fairing Power and Accessory connector in the upper left of the fairing. See **Photo 16**.

13. Remove the connector plug from the Black 2 pin fairing Power and Accessory connector on the motorcycle by pushing the center tab in and pulling the plug out. Save the plug for reinstallation later. Refer to **Photo 7**.
14. Plug the White male 2 pin connector of the Left BCM Adapter Harness into the fairing Black 2 pin fairing Power and Accessory connector, ensure that it snaps in.
15. Install the Black plug removed in the step 13 into the White female 2 pin connector of the Right BCM Adapter Harness.
16. Using the provided wire ties, secure the BCM Adapter Harnesses to prevent the wires from being damaged during fairing installation.
17. Remove the OEM fork reflector from the lower fork leg. Clean the reflector area removing any debris or tape from the OEM Reflector.
18. Wipe the reflector area down with the provided Isopropyl Alcohol Wipe and let dry.
19. Remove the protective red film from the back of the LED Fork Reflectors. Align the LED Fork Reflectors in the reflector area and press into place. The LED Fork Reflector should be mounted in the same location as the OEM reflector with the wire exiting the top, rear side of the light.
20. Route the wiring harness from each LED Fork Reflectors to the associated side BCM Adapter Harnesses in the fairing and connect to the Female JAE Connector.
21. Using the provided wire ties, secure the LED Fork Reflectors wiring harnesses to prevent the wires from being damaged.
22. Reinstall the fairing and windshield in the reverse order that it was removed
23. Reconnect the negative battery cable to the battery and reinstall the seat.
24. Perform a BCM sync by turning the ignition on, turn the 4 way hazards on, turn the ignition off. Allow the 4 way hazards to run for 3-4 minutes. Turn the ignition on. Turn the 4 way hazards off. Turn the ignition off.
25. Test operation of all lighting in all modes before riding.