



Custom Dynamics® Dual Electromagnetic Horn Kit with Dual Bracket Installation Instructions

We thank you for purchasing the Custom Dynamics® Dual Electromagnetic Horn Kit with Dual Bracket. Our products utilize the latest technology and high quality components to ensure you the most reliable service. We offer one of the best warranty programs in the industry and we back our products with excellent customer support, if you have questions before or during installation of this product please call Custom Dynamics® at 1(800) 382-1388.

Part Number: CD-HORN-DUAL

Package Contents:

- 6" Cable Ties (5)
- Cable Tie Mounts (2)
- Horn Y Harness (1)
- Dual Horn Cowbell Bracket (1)
- Horn Relay Wiring Harness (1)
- Dual Electromagnetic Horn (Horn, Flat Brackets and Nut) (1)

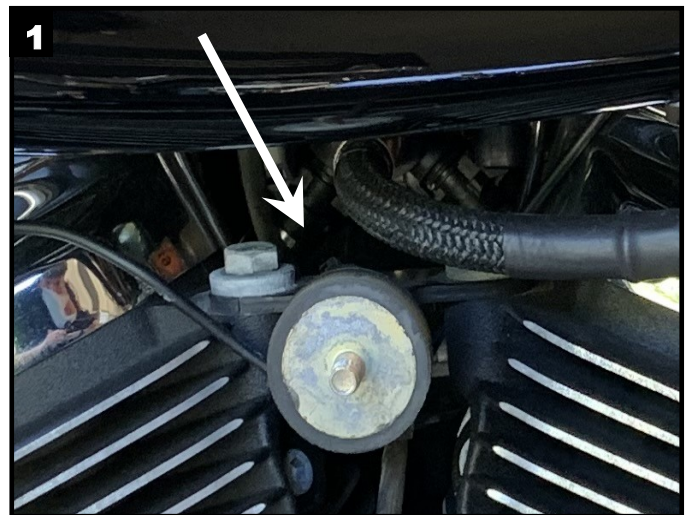
Harley Davidson Fitment (Instructions on Page 1 & 2): All 2023-Earlier Harley-Davidson® Electra Glide/Ultra (FLHT), Road Glide (FLTR), Street Glide (FLHX) and Road King (FLHR) models including CVO™, 2009-2023 Tri Glide Ultra (FLHTCUTG), 2010-2011 Street Glide Trike (FLHXXX), 2020-2022 CVO™ Tri Glide (FLHTCUTGSE), 2015-2023 Freewheeler (FLRT), 2023 Road Glide 3 (FLTRT), 2022-Earlier Sportster 1200 Custom (XL1200C), Super Low (XL1200T) and Seventy-Two (XL1200V), 2017-Earlier Dyna models (Except 2014-2017 FXDL/FXDLS), 2017-Earlier Softail models (Except FXSB/FXSE, FXS, FXCW/FXCWC).

Universal Fitment (Instructions on Page 3) Works on all 12V systems, this includes most motorcycles, pickup trucks and cars. It also comes with a universal mounting backing that makes the installation easy.



Harley Davidson Installation:

1. Remove the seat and disconnect the negative battery cable.
2. Remove the existing Horn, do not remove the mounting stud and isolator bushing, see Figure 1. Removing the isolator bushing will void the warranty of the Horn.



3. The Horn labeled with "H" is the High. The Horn Labeled with "L" is the Low. Connect the long black (-) wire and long red (+) wire of the Horn Y harness to the High tone horn terminals. The horn terminals are not polarity sensitive.



ATTENTION

Please read all Information below before Installation

Warning: Disconnect negative battery cable from battery; refer to owner's manual. Failure to do so may result in electrical shock, injury, or fire. Secure negative battery cable away from positive side of battery and all other positive voltage sources on vehicle.

Safety First: Always wear appropriate safety gear including safety glasses when performing any electrical work. It is highly recommended that safety glasses be worn throughout this installation process. Be sure vehicle is on level surface, secure and cool.

Attention: The wiring kit provided isolates the Dual Electromagnetic Horn electrical from any of the Harley Davidson electrical components. We only use the on/off aspect of the stock horn button, which turns the Dual Electromagnetic Horn relay on/off.

Attention: Dual Electromagnetic Horn bracket must be used with the stock rubber isolator bushing that came with your stock horn. Not doing so will void the warranty.

Note: Dual Electromagnetic Horn is not compatible with Love Jugs or any similar accessories.

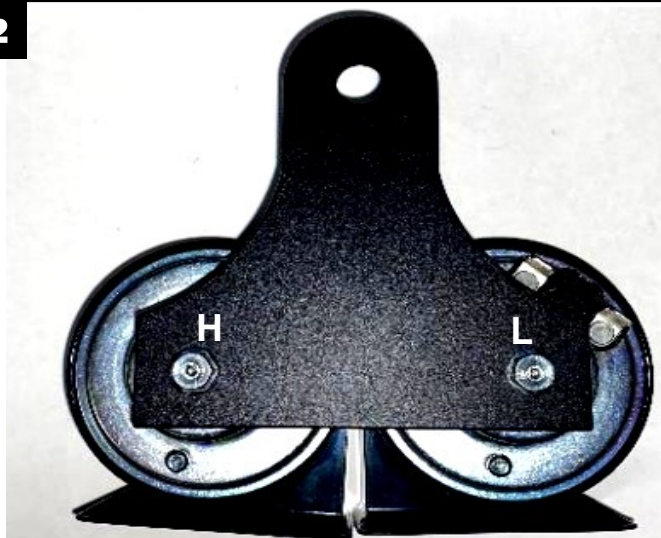
Questions? Call us at: 1 (800) 382-1388 M-TH 8:30AM-5:30PM / FR 9:30AM-5:30PM EST

Installation Instructions - Page 2

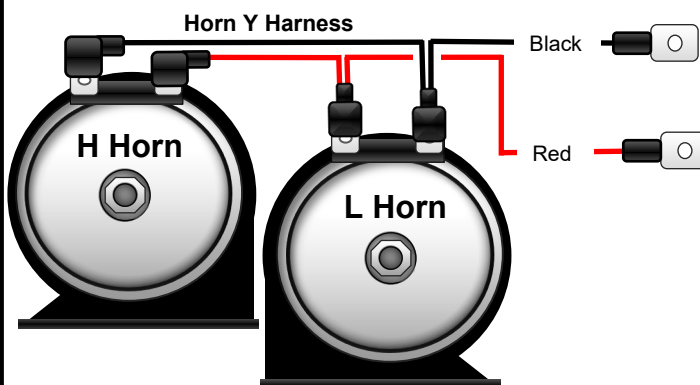
Installation Continued:

4. Mount both Dual Electromagnetic Horns to the Dual Horn Cowbell Bracket using the supplied nuts. The High tone Horn will mount on the left side and the Low tone Horn will mount on the right side. Reference orientation of the Horns in Figure 2.
5. Connect the remaining black (-) and red (+) wires of the Horn Y Harness to the Low Horn. Route the wires behind the Dual Horn Cowbell bracket. Reference Figure 3 for wire connections. Note: make sure that the female spade connectors that are connected to the horns do not touch the Dual Horn Cowbell Bracket; bend the horn's male spade connectors *slightly* if necessary.
6. Clean the back of the Dual Horn Cowbell Bracket with denatured alcohol. Remove the adhesive backing from the Relay on the Horn Relay Wiring Harness. Mount the relay to the backside of the Dual Horn Cowbell Bracket. Using the provided 6" Cable Ties and Cable Tie Mounts, secure the wiring to prevent the wire from becoming pinched or damaged.
7. Connect the long wire female spade terminals of the Horn Relay Wiring Harness to the positive and negative Male spade terminals on the Horn Y Harness. The positive wire is Red and the negative wire is Black.
8. Plug red wire (+) from Horn Relay Wiring Harness into positive horn wire of the bike (typically red). Plug black wire (-) from Horn Relay Wiring Harness into the negative horn wire of the bike (typically black), See Figure 4.
9. Connect the wire with the fuse attached to the Positive [+] post of the battery.
10. Reconnect the Negative battery cable.
11. Test Function of Dual Electromagnetic Horn.
12. Mount Dual Electromagnetic Horn Bracket assembly using stock mounting nut to secure, See Figure 5.
13. Disconnect the fused wire attached to the Positive [+] post of the battery.
14. Route the fused wire along frame and under the tank towards the battery.
15. Connect the eyelet of the fused wire from the Dual Electromagnetic Horn to the Positive terminal of the battery.
16. Using the provided 6" Cable Ties, secure the wiring to prevent the wire from becoming pinched or damaged.
17. Test the Dual Electromagnetic Horn for proper operation before riding.

2



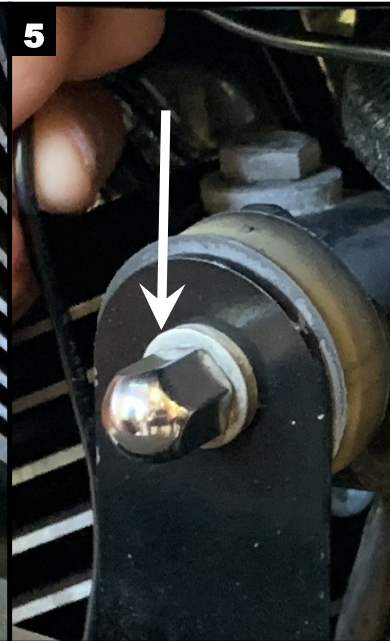
3



4



5

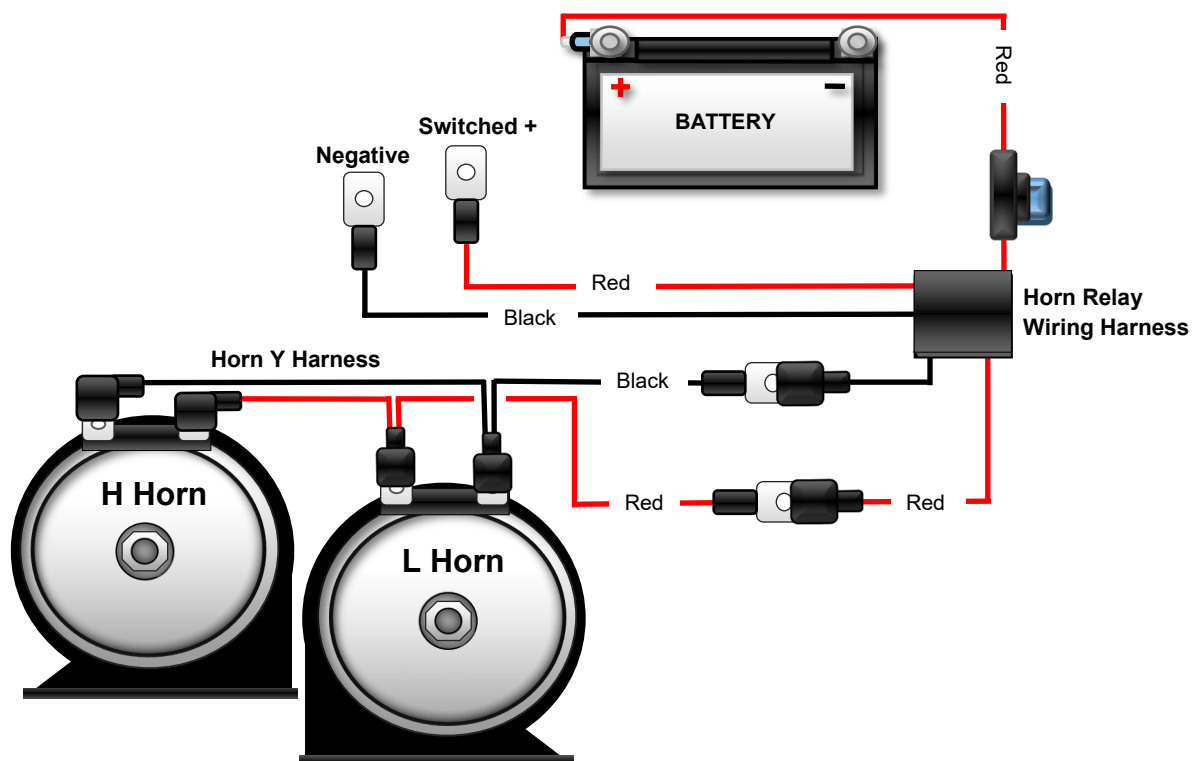


Installation Instructions - Page 3

Universal Installation:

1. Disconnect the negative battery cable. Refer to your owners manual if unsure of the process.
2. The Horn labeled with "H" is the High. The Horn Labeled with "L" is the Low. Connect the long black wire and long red wire of the Horn Y-harness to the High tone horn terminals. Reference Figure 2 on Page 2.
Note: For alternative mounting, use the universal mounting brackets included with the horn. If there is limited room, you can also install the horns separately to both sides of your vehicle. The supplied Y harness will need to be extended if mounted in separate locations. This will result in better sound coverage.
3. Mount both Dual Electromagnetic Horns to the Dual Horn Cowbell Bracket using the supplied nuts. The High tone Horn will mount on the left side and the Low tone Horn will mount on the right side. Reference orientation of the Horns in Figure 2 on Page 2.
4. Connect the remaining black and red wires of the Horn Y-Harness to the Low Horn. Reference Figure 6. **Note:** make sure that the female spade connectors that are connected to the horns do not touch the Dual Horn Cowbell Bracket; bend the horn's male spade connectors *slightly* if necessary.
5. Mount the Dual Horn Cowbell Bracket to the vehicle. **Note:** Keep you stock horn along side both Dual Electromagnetic horns for triple tones.
6. Connect the long red and black wire female spade terminals of the Horn Relay Wiring Harness to the black and red male spade terminals on the Horn Y Harness. See Figure 6.
7. Plug the red wire from the Horn Relay Wiring Harness into the switched positive horn circuit of the vehicle. Plug the black wire from the Horn Relay Wiring Harness into the negative horn circuit of the vehicle. See Figure 6. **Note:** If using alongside the stock horn for triple tones, you will have to cut off the male terminals (labeled, Negative and Switched +, in Figure 6) of the Horn Relay Wiring Harness and hardwire to the vehicles horn circuit.
8. Connect the wire with the fuse attached to the Positive [+] post of the battery.
9. Reconnect the Negative battery cable.
10. Test Function of Dual Electromagnetic Horn.
11. Using the provided 6" Cable Ties, secure the wiring to prevent the wire from becoming pinched or damaged.

6



Questions? Call us at: 1 (800) 382-1388 M-TH 8:30AM-5:30PM / FR 9:30AM-5:30PM EST