



## Road Glide LED Vent Trim Installation Instructions

We thank you for purchasing the Custom Dynamics® Road Glide LED Vent Trim. Our products utilize the latest technology and highest quality components to ensure you the most reliable service. We offer one of the best warranty programs in the industry and we back our products with excellent customer support, if you have questions before or during installation of this product please call Custom Dynamics® at 1(800) 382-1388.

### Part Numbers:

CD-RG-V-AW2-B  
CD-RG-V-AW2-BB

CD-RG-V-AW2-C

### Package Contents:

- LED Vent Trim Assemblies (pair)
- 4" Cable Ties (10)
- Speed Nuts (2)
- Instructions

Fitment: 2015-2023 Harley-Davidson® Road Glide (FLTRX), Road Glide Special (FLTRXS), 2022-2023 Road Glide ST (FLTRXST) & CVO™ Road Glide Limited (FLTRKSE), 2020-2024 Road Glide Limited (FLTRK), 2018-2022 CVO™ Road Glide (FLTRXSE), 2016-2019 Road Glide Ultra (FLTRU), 2020-2022 CVO™ Road Glide Ultra (FLTRUSE) and 2023-2024 Road Glide 3 (FLTRT).



### Installation:

1. Remove the 4 windshield fasteners and trim. Lift the windshield up to remove. Store the windshield in a safe place to prevent damage.
2. Remove the top vent. The top vent is secured to the fairing by clips. Position yourself in the front of the motorcycle and lift straight up on the top vent to release. (Picture 1) Store the top vent in a safe place to prevent damage.



Please read all Information below before Installation

**Warning:** Disconnect negative battery cable from battery; refer to owner's manual. Failure to do so may result in electrical shock, injury, or fire. Secure negative battery cable away from positive side of battery and all other positive voltage sources on vehicle.

**Safety First:** Make sure the bike is parked on a level surface and bike's mechanical components are cool to the touch.

**Notice:** This product is designed and intended for use as auxiliary lighting on motorcycles only. This product is NOT intended to replace any original equipment lighting installed on the motorcycle and should not be used for that purpose. This product must be wired in such a fashion that it does not interfere with any original equipment lighting.

**Notice:** Do NOT use thread locker such as Loc-Tite™ with this product. It will weaken the plastic at the screw holes causing cracks and will void the warranty.

**Note:** You will have to remove the front fairing dash and windshield in order to complete this installation. Please refer to your manufacturer's service manual if unsure of this procedure.

**Cleaning:** Take special care in cleaning the finish. Use only Alcohol or Iso-Heet and a fine microfiber cloth to remove dirt or debris. Never use abrasive polishes or cleaners as these can scratch the finish.

**Note:** Over-tightening the mounting hardware will cause the paint to chip which is not covered under the warranty.



3. Locate and unplug the left and right side 4 pin turn signal harness connectors. Refer to Photo #2.



Questions? Email: [info@CustomDynamics.com](mailto:info@CustomDynamics.com) or Call us at: 1 (800) 382-1388 M-TH 8:30AM-5:30PM / FR 9:30AM-5:30PM EST

## Installation Instructions - Page 2

### Installation (Continued):

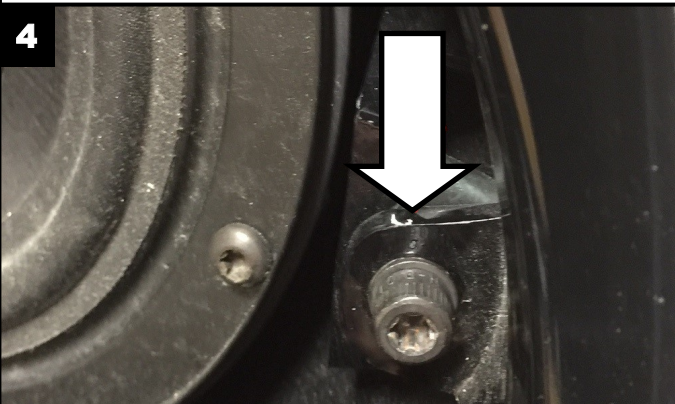
- Remove the 3/16" socket Allen head bolts from the outside of each turn signal housing. See Figure 3.

3

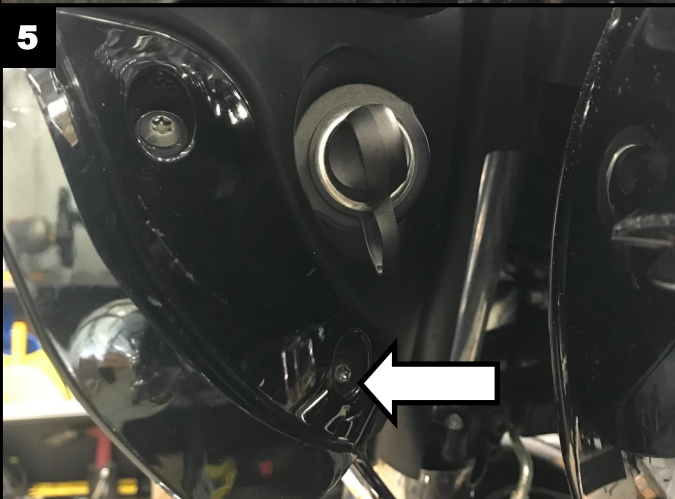


- Remove both left and right speaker grilles on the inner fairing.
- Once the speaker grilles are removed, Locate and remove the T-27 Torx screws in each corner of the speaker housing. See Figure 4.

4

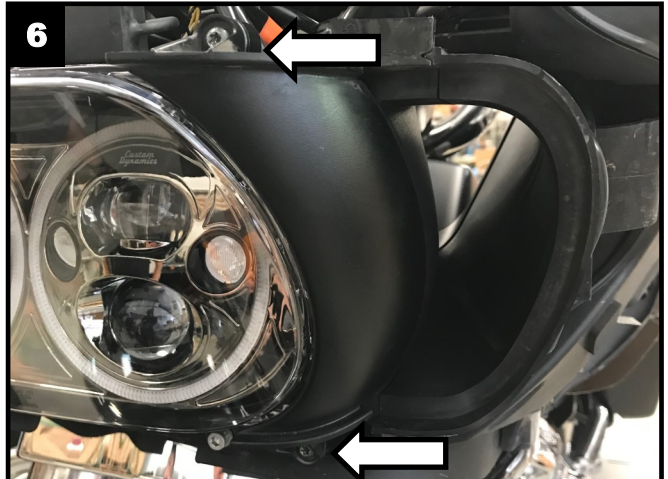


5

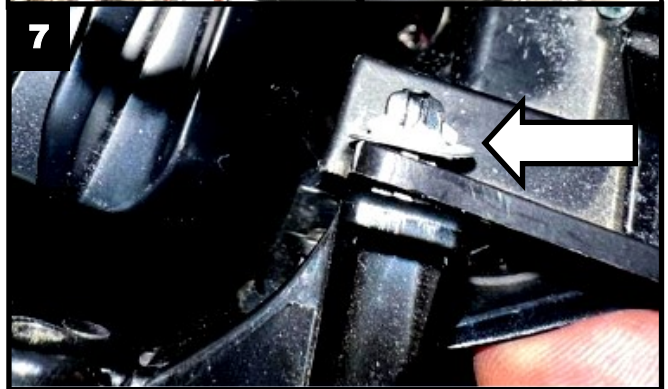


- Locate and remove the lower T-25 Torx screw on each side of the inner fairing. See Figure 5. Remove the outer fairing and set to side.
- Remove the two T-25 Torx screws on each side that secure the headlight bezels to the headlight. See Figure 6. Remove the headlight bezels and install the LED Vent Trim using the factory headlight bezel screws.  
**Note:** **Shark Demon Headlights** will not reuse the two T-25 torx screws. Instead use the two supplied Speed Nuts. Install the locating pin of the LED Vent Trim onto the bikes vent, Install the Speed Nut on the locating pin to hold in place. See Figure 7.

6



7



- Route the wires from each LED Vent Trim to the OEM connectors unplugged in Step 3.
- Connect the Male JAE connectors on the Vent Trim Harnesses to the Female JAE connector of the OEM Front Turn Signal Harnesses in the fairing.
- Secure the LED Vent Trim wiring harnesses with the provided cable ties to prevent them from becoming pinched.
- Reinstall the outer fairing using the original factory hardware.
- Connect the Female JAE connectors on the Vent Trim Harnesses to the OEM Male Front Fairing Turn Signal Harnesses.
- Reinstall speaker grilles by applying light pressure. They should snap into place.
- Reinstall factory vent, by snapping it into place, and Reinstall windshield using original factory hardware.
- Perform a BCM sync by turning key on, turn 4 way hazards on, turn key off. Allow hazards to run for 3-4 minutes. Turn Key on, Turn Hazards off, Turn Key off.
- Test operation of all lighting in all modes.