



Custom Dynamics® 23 CVO Center Windshield Trim LED Installation Instructions

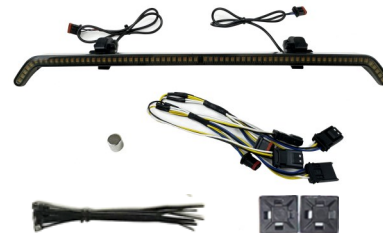
We thank you for purchasing the Custom Dynamics® 23 CVO Center Windshield Trim LED. Our products utilize the latest technology and high quality components to ensure you the most reliable service. We offer one of the best warranty programs in the industry and we back our products with excellent customer support, if you have questions before or during installation of this product please call Custom Dynamics® at 1(800) 382-1388.

Part Numbers: CD-RG23-C-B

Package Contents:

- 23 CVO Center Windshield Trim LED (1)
- PT-HARN-14-JAE (2)
- 6" Cable Ties (4)
- Cable Tie Holders (2)
- Magnet (1)
- Instructions (1)

Fits: 2023-2024 Harley-Davidson® CVO Road Glide (FLTRXSE), 2024 Road Glide (FLTRX), and CVO Road Glide ST (FLTRXSTSE). **Note: Adaptor Harness P/N MPR-23-FTS will be needed for install (Sold separate-**

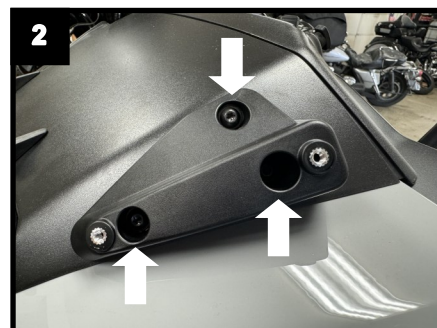


Installation:

1. Remove all necessary parts to disconnect the negative battery cable from the battery.
2. Remove 4 screws and rubber seals to remove windshield. Shown in **Figure 1**.



3. Remove the 3 screws and remove the windshield blocks on both sides of motorcycle. Shown in **Figure 2**.



ATTENTION

Please read all Information below before Installation

Warning: Disconnect negative battery cable from battery; refer to owner's manual. Failure to do so may result in electrical shock, injury, or fire. Secure negative battery cable away from positive side of battery and all other positive voltage sources on vehicle.

Safety First: Always wear appropriate safety gear including safety glasses when performing any electrical work. It is highly recommended that safety glasses be worn throughout this installation process. Be sure vehicle is on level surface, secure and cool.

Important: This product is designed and intended for use as auxiliary lighting only. It is **NOT** intended to replace any original equipment lighting installed on the vehicle and should not be used for that purpose. This product must be wired so that it does not interfere with any original equipment lighting.

Note:

If you're experiencing a Rapid Flash on your Turn Signal dash indicator, you may need to sync the BCM (Body Control Module) and clear the trouble codes. Follow the steps to clear the trouble codes and perform the BCM sync.

To sync the BCM, perform the following steps:

1. Turn Ignition on, but do not start the bike.
2. Turn on 4 way hazards by pressing the hazard button on the controls. Count 10 flashes and deactivate.
3. Turn on 4 way hazards for another 10 flashes and deactivate.
4. Clear Diagnostic Trouble Codes (DTC's)
5. Turn Ignition OFF then back ON. Turn on 4 way hazards.

After performing the steps above, turn the ignition switch to the ON position and test for proper turn signal operation. The dash turn signal indicators should no longer be Rapid Flashing.

Questions? Email: Info@CustomDynamics.com or Call us at: 1 (800) 382-1388 M-TH 8:30AM-5:30PM / FR 9:30AM-5:30PM EST

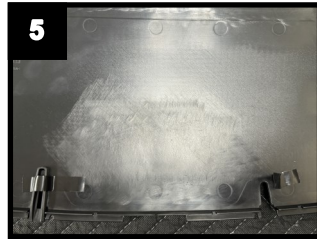
Installation Instructions - Page 2

Instructions Continued:

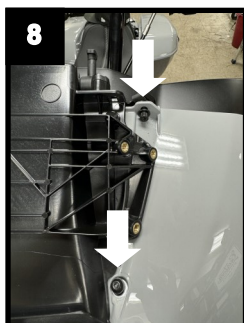
- Remove center vent face cover that is held in place by retaining clips by gently prying and pulling vent cover straight out and away from motorcycle. Shown in **Figure 3**.



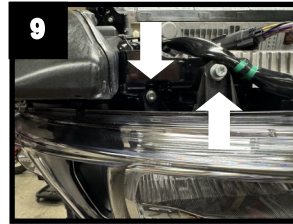
- Remove vent cover by lifting up and out and remove the rubber windshield posts. Shown in **Figures 4 & 5**.



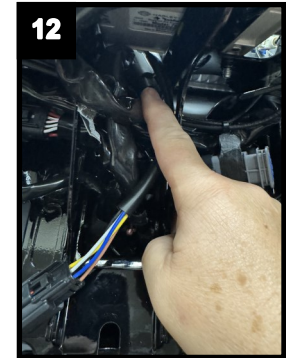
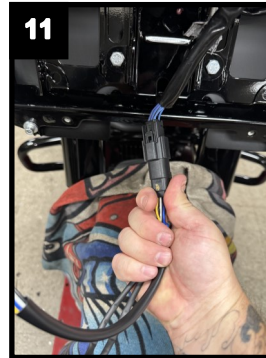
- Remove outer fairing by removing the speaker grills that are held into place with retaining clips, pry up at the inner edge and pull away from motorcycle. Remove the 2 screws in speakers area and the 2 screws down at the fairing wind deflectors and remove the final 4 screws at the top of the fairing and remove fairing gently. Shown in **Figures 6, 7 & 8**.



- When removing outer fairing gently pull away from the motorcycle and set aside in a safe place to prevent damage.
- Remove headlight by removing 6 screws and pull headlight away from motorcycle and unplug the headlight connector. Shown in **Figures 9 & 10**.



- Connect Adaptor Harness MPR-23-FTS (**Sold separately**) to headlight connector and route harness up through the bracket in between the amp and speedo unit and set the pigtails from the harness on top of the amp. Shown in **Figures 11 & 12**.



- Connect MPR-23-FTS Harness to headlight and reinstall headlight. Plug the 2 PT-HARN-14-JAE Harnesses to the pigtails from the MPR-23-FTS Harness. The pigtail with the brown wire is the right and the one with the violet wire is the left. Route the wires up by the vent and mounting post and cable tie wires to secure them to prevent from being cut, frayed or pinched. Route as shown in **Figure 13**.

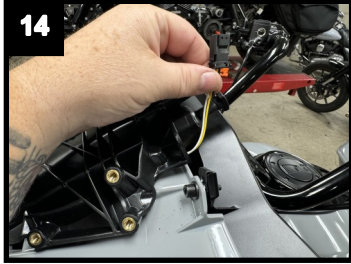


- Reinstall the outer fairing on the motorcycle by reinstalling the top screws, the speaker screws and the wind deflector screws and reinstalling the speaker grills back into place.

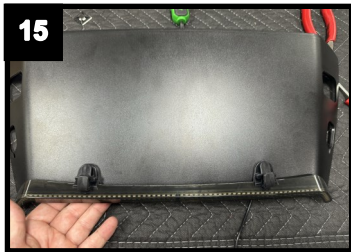
Installation Instructions - Page 3

Instructions Continued:

12. Once the outer fairing is back on make sure the PT-HARN-14-JAE wires are sticking out enough to plug into. Shown in **Figure 14**.



13. Install Center Windshield Trim LED to top vent cover by sliding the rubber posts into slots in cover all the way onto the cover. Shown in **Figure 15**.



14. Flip cover over and use 2 Cable Tie Holders and Cable Ties to secure wires and route as shown in **Figure 16**.



15. Install vent cover back on the top of the fairing making sure the wires are routed as close to the edge as possible and the wire is below and not in the way of the screw holes for the windshield blocks and the wires are exiting at the top to be plugged into the PT-HARN-14-JAE connector. Shown in **Figure 17**.



16. Once the Center Windshield Trim LED wires are plugged into the PT-HARN-14-JAE connectors tuck excess wires back into the hole where the PT-HARN-14-JAE wire was coming from. Shown in **Figure 18**.



17. Reinstall the center vent face cover, windshield blocks and windshield.

18. Reinstall all necessary parts to reconnect the negative battery cable to battery.

19. Test all front lighting operation.

20. Programming signal functionally is as follows: To select the turn signal configuration, place the magnet at/near the position shown in **Figure 19** within 20 seconds of power on. Once the Center Windshield Trim LED senses the magnet, it will change and display the next turn signal configuration. To cycle to the next turn signal configuration, move the magnet away from the position in **Figure 19** and bring it back to the previous position within 10 seconds. If the magnet is continuously held at/near the position in **Figure 19**, the Center Windshield Trim LED will display or demonstrate the current turn signal configuration. If the magnet is removed for longer than 10 seconds, the turn signal configuration will be saved. You can choose between 3 turn signal function modes. Both sides will need to be programmed.

- Sequencing On: The turn signals LED's turn ON sequence from inward to outward.
- Sequencing Off: The turn signals LED's turn ON initially, then sequence OFF from inward to outward.
- Non Sequence: The turn signal operates normally.

