



## Road Glide LED Vent Trim Installation Instructions

We thank you for purchasing the Custom Dynamics® Road Glide LED Vent Trim. Our products utilize the latest technology and highest quality components to ensure you the most reliable service. We offer one of the best warranty programs in the industry and we back our products with excellent customer support, if you have questions before or during installation of this product please call Custom Dynamics® at 1(800) 382-1388.

### Part Numbers:

CD-RG-VENT-15-B      CD-RG-VENT-15-C  
CD-RG-VENT-15-BB

### Package Contents:

- LED Vent Trim Assemblies (pair)
- Instructions

**Fitment:** 2015-2020 Harley-Davidson Road Glide, Road Glide Special & Road Glide Ultra Models Including CVO™



## ATTENTION



Please read all Information below before Installation

**Warning:** Disconnect negative battery cable from battery; refer to owner's manual. Failure to do so may result in electrical shock, injury, or fire. Secure negative battery cable away from positive side of battery and all other positive voltage sources on vehicle.

**Safety First:** Make sure the bike is parked on a level surface and bike's mechanical components are cool to the touch.

**Notice:** This product is designed and intended for use as auxiliary lighting on motorcycles only. This product is NOT intended to replace any original equipment lighting installed on the motorcycle and should not be used for that purpose. This product must be wired in such a fashion that it does not interfere with any original equipment lighting.

**Note:** You will have to remove the front fairing dash and windshield in order to complete this installation. Please refer to your manufacturer's service manual if unsure of this procedure.

**Cleaning:** Take special care in cleaning the finish. Use only Alcohol or Iso-Heet and a fine microfiber cloth to remove dirt or debris. Never use abrasive polishes or cleaners as these can scratch the finish.

**Notice:** Failure to use the provided mounting hardware will void all warranties.

**Note:** Over-tightening the mounting hardware will cause the paint to chip which is not covered under the warranty.



### Installation:

1. Remove the 4 windshield fasteners (Picture 1). Lift the windshield up to remove. Store the windshield in a safe place to prevent damage.



2. Once the windshield fasteners and windshield are removed, you will need to remove the top vent. The top vent is secured to the fairing by clips. Position yourself in the front of the motorcycle and lift straight up on the top vent to release. (Picture 2) Store the top vent in a safe place to prevent damage.

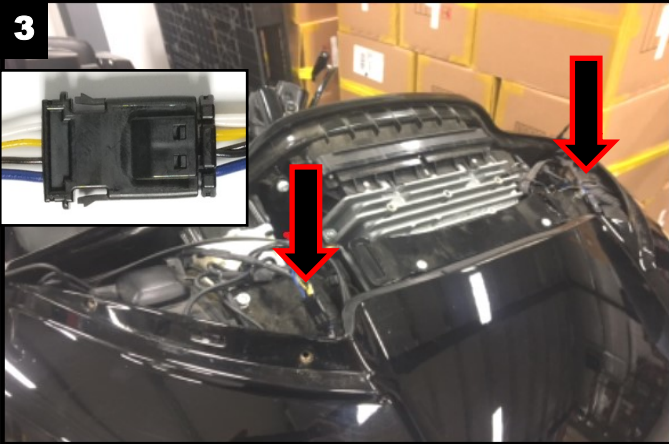


Questions? Call us at: 1 (800) 382-1388 M-TH 8:30AM-5:30PM / FR 9:30AM-5:30PM EST

## Installation Instructions - Page 2

### Installation (Continued):

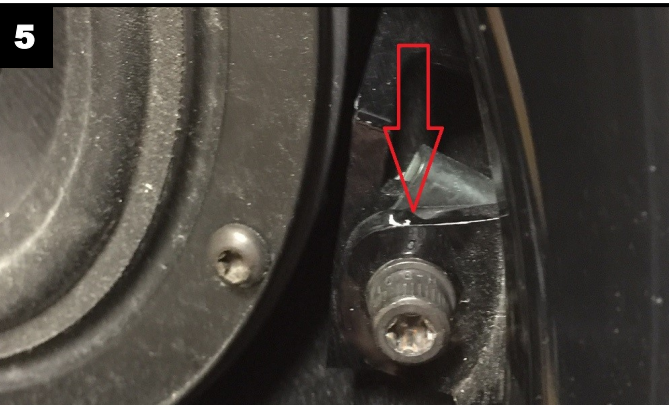
3. Locate and unplug the left and right side 3 pin turn signal harness. Refer to Photo #3.



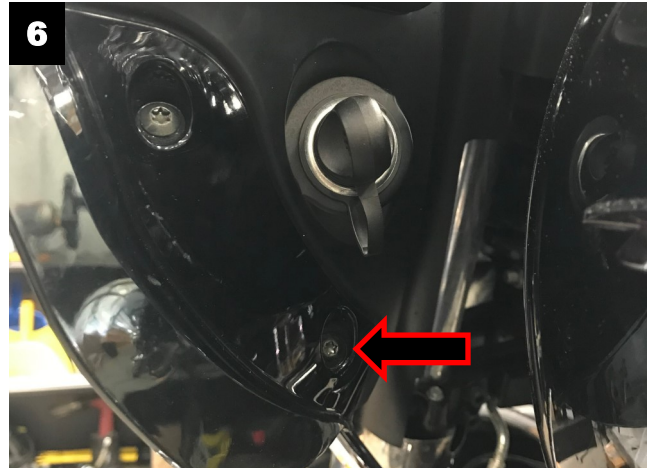
4. Remove the 3/16" socket allen head bolts from the outside of each turn signal housing.



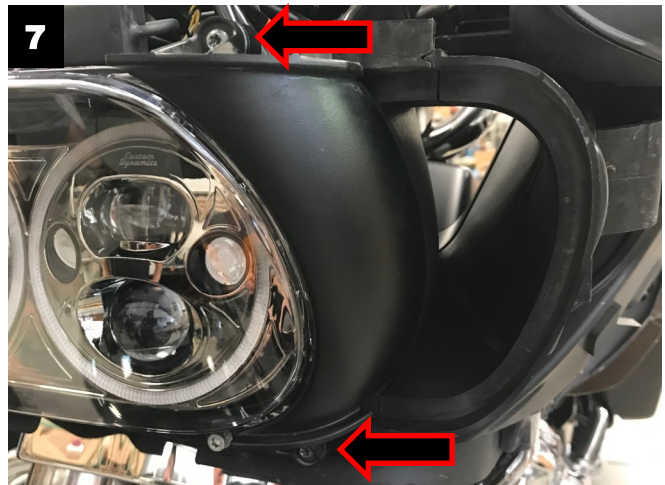
5. Remove both left and right speaker grilles on the inner fairing.
6. Once the speaker grilles are removed, Locate and remove the T-27 torx bolts in each corner of the speaker housing.



7. Locate and remove the lower T-25 screw on each side of the inner fairing.



8. Remove the outer fairing and set to side.
9. Remove the 2 T-25 torx screws on each side that secure the headlight bezels to the headlight. Remove the headlight bezels and install the LED Vent Trim using the factory headlight bezel screws.



10. Route the wires from each LED Vent Trim to the OEM connectors (unplugged in step 3) and plug in making sure the left LED Vent Trim is plugged into the OEM connector with a purple wire and the right LED Vent Trim is plugged into the OEM connector with a brown wire.
11. Reinstall the outer fairing using the original factory hardware.
12. Reinstall speaker grilles by applying light pressure. They should snap into place.
13. Reinstall factory vent by snapping it into place.
14. Reinstall windshield using original factory hardware.
15. Perform a BCM sync by turning key on, turn 4 way hazards on, turn key off. Allow hazards to run for 3-4 minutes. Turn Key on, Turn Hazards off, Turn Key off.
16. Test operation of all lighting in all modes.

Questions? Call us at: 1 (800) 382-1388 M-TH 8:30AM-5:30PM / FR 9:30AM-5:30PM EST