



Custom Dynamics® Batwing Fairing AW2 Vent Trim Installation Instructions

We thank you for purchasing the Custom Dynamics® Batwing Fairing AW2 Vent Trim. Our products utilize the latest technology and high quality components to ensure you the most reliable service. We offer one of the best warranty programs in the industry and we back our products with excellent customer support, if you have questions before or during installation of this product please call Custom Dynamics® at 1(800) 382-1388.

**Part Number: CD-VENT-AW2-B
CD-VENT-AW2-BB, CD-VENT-AW2-C**

Package Contents:

- AW2 Vent Trim (1)
- Isopropyl Alcohol Wipe (1)
- 4" Black Tie Wraps (6)
- Instructions

Fits: 2014-2021 Harley-Davidson® Touring Models with Batwing Fairings (Electra Glide®, Tri Glide®, and Street Glide® models)



ATTENTION



Please read before Installation

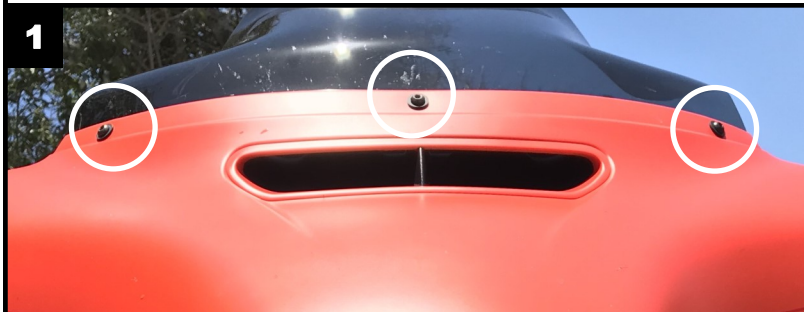
Safety First: Make sure the bike is parked on a level surface and bike's mechanical components are cool to the touch. To prevent electrical shock, disconnect the negative battery terminal from the battery before beginning installation.

Note: You will have to remove the outer front fairing in order to complete this installation. Please refer to your manufacturer service manual if unsure of this procedure.

Important: It is recommended that the installation of this product should be performed in a controlled environment with constant temperature of 70F or above to allow proper adhesion. Allow 24 hours before riding or washing the bike.

Installation:

1. Remove the three T27 Torx Bolts from the outer fairing as shown in Picture 1. Remove the windshield and store it in a safe place for reinstallation later.
2. Reinstall the center T27 Torx Bolt only that was removed in Step 1. Lightly tighten the center bolt to secure the fairing while you remove the remaining 4 inner fairing bolts.



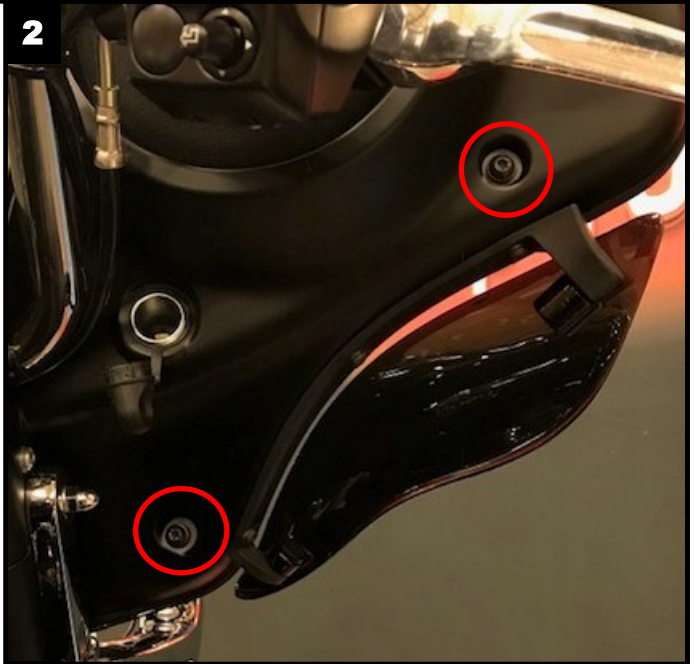
3. Remove the two T27 Torx bolts from the left and the right side of the inner fairing as shown in Picture 2. Save the bolts for reinstallation.
4. While standing in front of the bike and holding the fairing, remove the center outer fairing T27 Torx bolt and pull the fairing slightly away from the bike.
5. With the fairing slightly pulled away from the bike, disconnect the connector from the headlamp. Lay the fairing on a protected flat surface to prevent damage.

Questions? Call us at: 1 (800) 382-1388 M-TH 8:30AM-5:30PM / FR 9:30AM-5:30PM EST

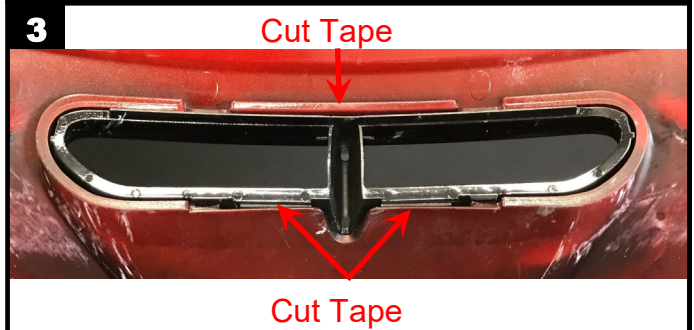
Installation Instructions - Page 2

6. From the backside of the fairing, carefully use a razor knife and cut the three pieces of double sided tape holding the OEM vent trim in place. Refer to Picture 3.
7. Remove the OEM vent trim from the fairing. Remove and clean any remaining double sided tape from the vent opening in the fairing.
8. Use the provided Isopropyl Alcohol Wipe, clean the top and bottom of the vent opening where you removed the existing double sided tape.
9. Remove the 3 pieces of Red backing tape from the new vent trim.
10. Install the new vent trim into the vent opening on the fairing. Place the top of the vent trim in position first, as shown in Picture 4, then push the bottom of the vent trim into position.
11. Confirm that you have all 4 of the vent trim retaining tabs snapped into position on the backside of the fairing as shown in Picture 5.

2



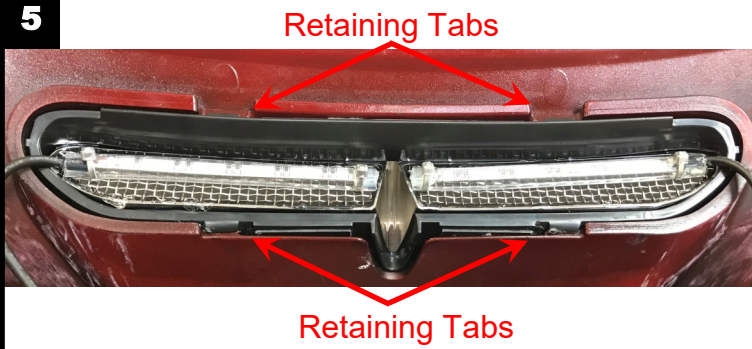
3



4



5



Installation Instructions - Page 3

Installation Continued:

12. Remove the 1/2" nuts that secure the Right turn signal housing to the fork as shown in Picture 6. Store in a safe place for reinstallation later. Pull assembly away from the fork to reveal the black JAE wiring connector.
13. Unplug the black JAE wiring connector by pushing in on the tab located on the male side of the connection, highlighted in the Picture 7. Push the tab and pull apart both sides at the same time. Remove the turn signal assembly from the bike completely and store in a safe place for reinstallation shortly.
14. Repeat steps 12 and 13 for the Left side.
15. While holding the front outer fairing in front of the bike, plug the male connector of the Vent Light pass-through harness into the female connector of the factory turn signal wiring connector (disconnected in step 13).
16. Push the Vent Light female connector of the Pass-through harness into the hole in the fork as shown in Picture 8. Repeat step for the other side.
17. Secure wiring as needed to prevent damage and re-install the front outer fairing.
18. Re-install both turn signal housings onto the forks, plugging the male JAE connector of the stock turn signal into the female JAE connector of the pass through harness and secure with the original nuts.
19. Test operation of the headlight, vent light and turn signals in all modes.

