



Custom Dynamics® ProBEAM® Road Glide® LED Turn Signals Installation Instructions

We thank you for purchasing the Custom Dynamics® ProBEAM® Road Glide® Turn Signals! Our LEDs offer maintenance free service and higher visibility. Our ProBEAM® product line utilizes the latest technology and automotive grade components to ensure the highest level of reliable service. Custom Dynamics® offers one of the best warranty programs and customer support in the industry. If you have any questions during the installation of this product please call us at 1(800) 382-1388.

Part Number: PB-RG-TS-15-B PB-RG-TS-15-C

Package Contents:

- ProBEAM® LED Turn Signal w/gasket (Pair)
- A/W Convertors (Pair)
- 5/16-18 x 3/4 Sock Head Screw (2)
- 1/4-20 x 1 Button Head Screw (2)
- Thread locker 0.5 ml (1)
- Instructions

Fitment: 2015-2020 Harley-Davidson Road Glide, Road Glide Limited, Road Glide Special & Road Glide Ultra Models Including CVO™



Installation:

1. Remove the 4 windshield fasteners (Picture 1). Lift the windshield up to remove. Store the windshield in a safe place to prevent damage.



2. Once the windshield fasteners and windshield are removed, you will need to remove the top vent. The top vent is secured to the fairing by clips. Position yourself in the front of the motorcycle and lift straight up on the top vent to release. (Picture 2) Store the top vent in a safe place to prevent damage.



Please read all information below before Installation

Warning: Disconnect negative battery cable from battery; refer to owner's manual. Failure to do so may result in electrical shock, injury, or fire. Secure negative battery cable away from positive side of battery and all other positive voltage sources on vehicle.

Safety First: Always wear appropriate safety gear including safety glasses when performing any electrical work. It is highly recommended that safety glasses be worn throughout this installation process. Be sure vehicle is on level surface, secure and cool.

Important: This product is designed and intended for use as auxiliary lighting only. It is NOT intended to replace any original equipment lighting installed on the vehicle and should not be used for that purpose. This product must be wired so that it does not interfere with any original equipment lighting.

Installation Instructions - Page 2

Installation (Continued):

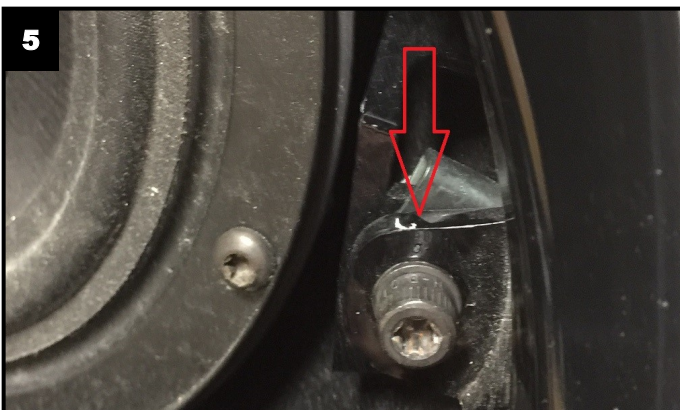
3. Locate and unplug the left and right side 4 pin turn signal harness connectors. Refer to Photo #3.



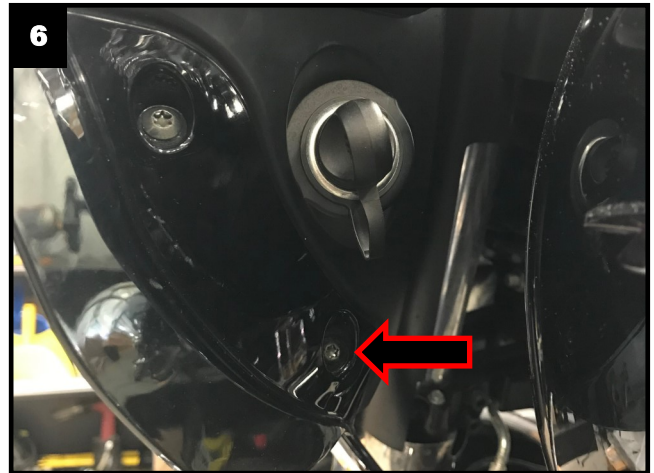
4. Remove the 3/16" socket allen head bolts from the outside of each turn signal housing. Refer to Photo #4



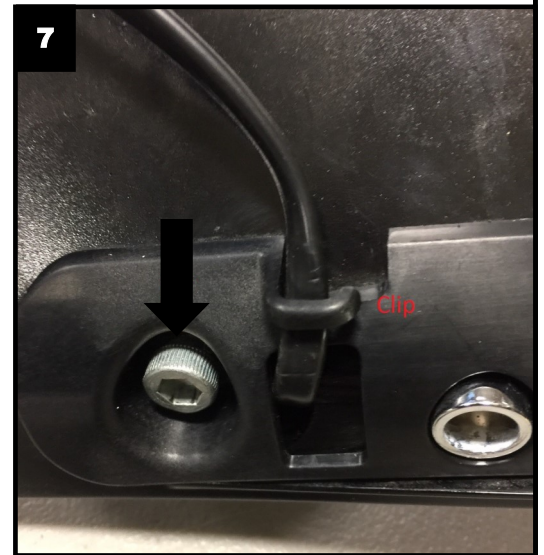
5. Remove both left and right speaker grilles on the inner fairing.
6. Once the speaker grilles are removed, locate and remove the T-27 Torx bolts in each corner of the speaker housing. Refer to Photo #5



7. Locate and remove the lower T-25 screw on each side of the inner fairing. Refer to Photo #6



8. Remove the outer fairing and set to side.
9. Remove both the left and right OEM turn signal housings from the outer fairing by removing the two 1/4" allen head socket bolts on the back side of each turn signal. Refer to Photo #7



10. Install the new right front turn signal and attached gasket by routing the wire and plug through the hole in the fairing and through the clip.
11. Align the locating pin on the backside of the new turn signal unit with the hole on the plastic mount. Place a drop of supplied Loctite on threads of supplied 5/16-18 socket head screw, tighten securely.
12. Repeat steps 10 and 11 for the left side.
13. Reinstall the outer fairing using the original hardware.
14. Connect the A/W Convertors to the male turn signal wire connectors. Connect the A/W Convertors to the male OEM connectors (unplugged in step 3). The left turn signal is plugged into the OEM connector with a blue/purple stripe wire and the right turn signal is plugged into the OEM connector with a blue/ brown stripe wire.
15. Place a drop of supplied thread locker on threads of supplied 1/4x20 button head screws. Install and tighten from the outside of each turn signal.
16. Reinstall speaker grilles by applying light pressure. They should snap into place.
17. Reinstall factory vent, by snapping it into place, and reinstall windshield using original hardware.
18. Perform a BCM sync by turning key on, turn 4 way hazards on, turn key off. Allow hazards to run for 3-4 minutes. Turn Key on, Turn Hazards off, Turn Key off.
19. Test operation of running and turn signal lights.