

51105 Tach Adapter

To front cylinder

To rear
cylinder

To tach





INSTALLATION INSTRUCTIONS for TACH ADAPTER Part Number 8-2050

CAUTION: READ INSTRUCTIONS CAREFULLY BEFORE STARTING INSTALLATION

OVERVIEW

Crane Tach Adapter part number 8-2050 is intended for use with electronic tachometers that do not function correctly after installation of a Crane ignition system.

HI-2 (P/N 8-2000) SINGLE FIRE MOTORCYCLE IGNITION

Electric tachs will read one-half true engine speed when a Crane HI-2 is installed. The 8-2050 tach adapter is required for all HI-2 applications with an electric tach.

1. First, try the hookup shown in Figure 1 for a ground sensing tach. If the tach works properly, skip ahead to step 3. If the tach needle does not move as engine speed changes, or if the needle jumps erratically, re-check your connections.
2. If the tach does not function properly, re-wire the adapter for a pulse-sensing tachometer as shown in Figure 2. If the tach still fails to function, it may be defective.

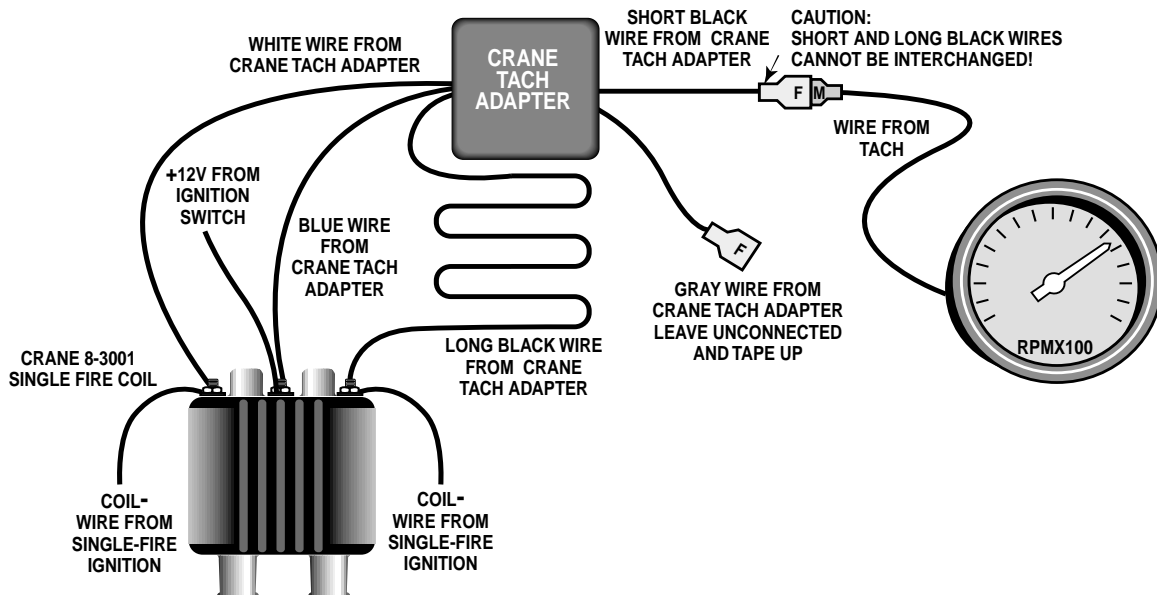
3. Use the supplied tie wrap to secure the tach adapter away from hot engine or exhaust pipe surfaces. Use electrical tape to secure the unused wire (gray or short black).

HI-4 (P/N 8-2100 AND 8-2200) SINGLE FIRE MOTORCYCLE IGNITIONS

The Crane HI-4 system has a tach output (brown wire) that is compatible with most electric tachs. Some tachs require a high voltage trigger pulse. If the tach does not function when connected to the brown wire from the HI-4, the 8-2050 tach adapter is required.

1. Use the hookup shown in Figure 2 for a pulse sensing tach. If the tach needle does not move as engine speed changes, or if the needle jumps erratically, re-check your connections. If the tach still fails to function correctly, it may be defective.
2. Use the supplied tie wrap to secure the tach adapter away from hot engine or exhaust pipe

Figure 1. Tach Adapter Hookup for Ground Sensing Motorcycle Tach



530 Fentress Boulevard, Daytona Beach, FL 32114

Tech Line: (386) 258-6174 Fax: (386) 258-6167

Check our web site for updates: www.cranecams.com

surfaces. Use electrical tape to secure the unused short black wire.

AUTOMOTIVE IGNITION SYSTEMS

Some tachometers may operate erratically when a Crane inductive ignition, such as the XR700, is installed. This problem is most common on older vehicles originally equipped with points type ignition. If the tach does not function correctly, the 8-2050 tach adapter may help.

1. Use the hookup shown in Figure 3. If the tach needle does not move as engine speed changes, or if the needle jumps erratically, re-check your connections. If the tach still fails to function correctly, you may need to replace it with an aftermarket unit.
2. Use the supplied tie wrap to secure the tach adapter away from hot underhood areas. Use electrical tape to secure the white and gray wires.

Figure 2. Tach Adapter Hookup for Pulse Sensing Motorcycle Tach

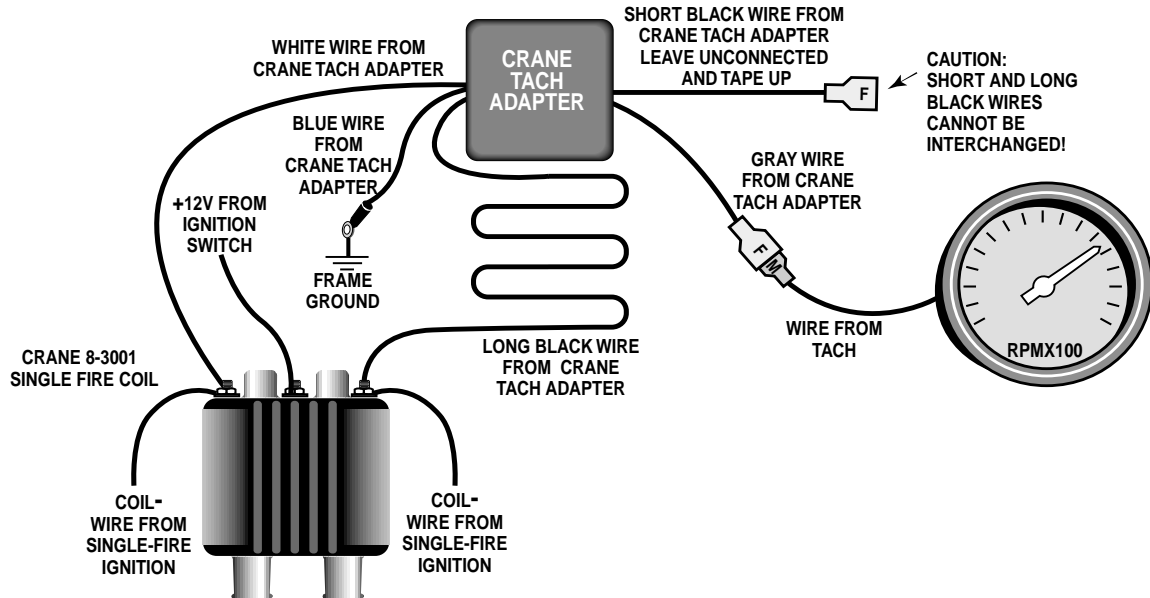


Figure 3. Tach Adapter Hookup for Ground Sensing Automotive Tach

