

INSTRUCTION

OIL PUMP

for Harley Davidson BIG TWIN engine
1973-1991

Thank you for purchasing DAYTONA OIL PUMP KIT.

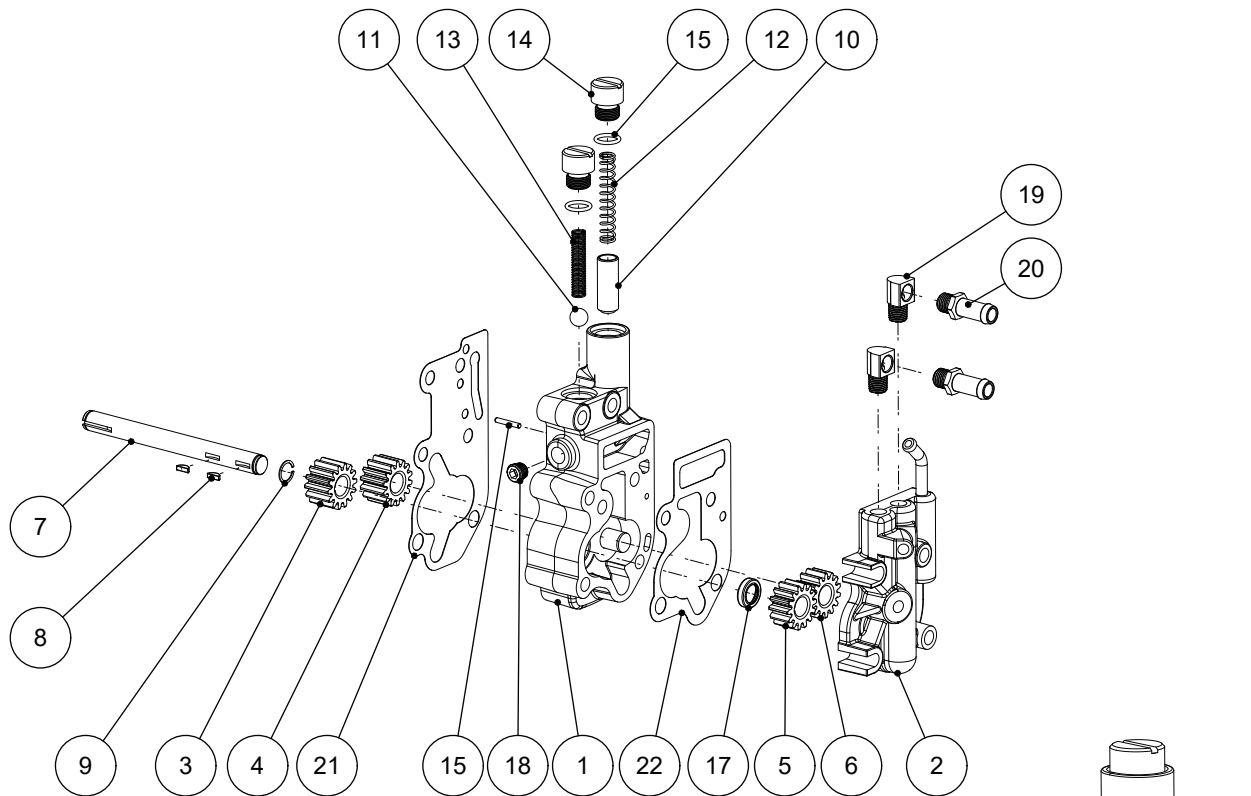
Product Features

- Oil pump for replacement.

1. Read all instructions before use.
2. After installation, check to see if all the parts are correctly installed, and see if all the screws are torqued properly.
3. If anything unusual may be found while driving, pull over at a safe place to check.
4. Oil line connection varies by model.
Please refer to the manual and parts catalog for each model.

Install

1. See the service manual for oil pump installation.
2. See the parts catalog for each model.
3. When installing the pump assembly, inject engine oil inside.



PARTS LIST		
No.	DESCRIPTION	QTY
1	BODY COMP.OIL PUMP	1
2	COVER COMP.OIL PUMP	1
3	DRIVE GEAR A	1
4	IDLE GEAR A	1
5	DRIVE GEAR B	1
6	IDLE GEAR B	1
7	DRIVE SHAFT	1
8	KEY	2
9	CLIP,DRIVE SHAFT	1
10	VALVE,OIL PUMP	1
11	BALL,CHECKV ALVE	1
12	SPRING,RELIEF VALVE	1
13	SPRING,CHECK VALVE	1
14	PLUG,CAP	2
15	PIN,VALVE STOP	1
16	O-RING	2
17	OIL SEAL	1
18	PLUG,TAPER SCREW	1
19	ELBOW,OIL PUMP	2
20	FITTING,OIL LINE HOSE	2
21	GASKET,OIL PUMP BODY	1
22	GASKET,OIL PUMP COVER	1

