



**EXHAUST SYSTEM # HD00211
SHARP CURVE RADIUS (2-2)**

Feel the Power of Freedom

Congratulations, you have acquired the finest aftermarket performance exhaust system available for your motorcycle. Your FREEDOM PERFORMANCE exhaust system was designed to perform fit and give the optimum sound and style at a very affordable price

WARNING: DUE TO THIS DESIGN SOME ACCESSORIES MAY INTERFERE WITH THIS EXHAUST SYSTEM SUCH AS SADDLE BAGS OR PASSENGER FOOT PEGS IN ORDER TO FIT PROPERLY IN SOME MODELS THEY HAVE TO BE RELOCATED.

Please follow the installation instructions and please do not hesitate to call us for any technical questions at (310) 324-0415

PACKAGING HD00211-HW (*) =ASSEMBLED

PART NUMBER	DESCRIPTION	QTY	PART NUMBER	DESCRIPTION	QTY
S280-F1	FRONT HEAD PIPE	1	HWC0002	HOSE CLAMP # 24 STAINLESS STEEL	3
S281-F1	REAR HEAD PIPE	1	HWC0003	HOSE CLAMP # 28 STAINLESS STEEL	4
S282-F3	FRONT HEAT SHIELD	1	HWC0011	BARREL CLAMP # 60 STAINLESS STEEL	2
S283-F3	REAR HEAT SHIELD	1	HWB0013	3/8"-16 X 2-1/2" SOCKET CAP SCREW ZINC	1
MGS140-F5	CROSSOVER RADIUS MUFFLER	1	HWB0010	3/8"-16X3/4" SERRATED FLANGE SCREW ZINC	2
MBK-S130-F4	MOUNTING BRACKET	1	HWB0007	5/16-18 x 5/8" SERRATED FLANGE SCREW ZINC	4
MBK-M115-F7	BACK PLATE BRACKET	2	HWM0002	PLSTIC TIE DOWN 7" LONG BLACK	1
A125-O2-F14	OXYGEN SENSOR ADAPTER (18-12)	2	HD00211-HW	HARDWARE BOX	1
A110-O2-F14	M12 X 1.25 SENSOR BUNG PLUG	2	HD00211-INS	INSTRUCTION MANUAL	1

ME
TSYS
TSC
HAXE
KOOT
MHI
GZ-
VOMER

1. Disconnect Oxygen sensors: Some models (18MM sensors) have the sensor underneath the oil tank, on the right hand side, find the rear oxygen sensor connector and disengage from harness. Other models (12MM sensors) it's necessary to remove the seat from motorcycle refer to owner's manual for the proper procedures to remove it. Once the seat has been removed locate the harness and unplug sensor from harness. Make sure to remember the path of the wire as it will be re-routed thru the same path. Models without oxygen sensors skip steps 1, 2 and 3)
2. Unlock the plastic cover above the rectifier right in front of the frame of the motorcycle to get access to the front oxygen sensor connector. (18MM sensors) Unplug sensor from harness. Now remove cable tie which is holding sensor wire to the motorcycle frame and feed it the end of the wire through releasing it from the motorcycle.
3. Models with (12mm sensors) locate harness underneath the rectifier and disengage sensor. Note: most of the cases, (86-06) there are no Oxygen sensors (07-12) have 18 mm sensors and (13-up) have 12mm sensors consult your owner's manual for more information.
4. If equipped, loosen the floor boards to gain clearance for exhaust removal and installation.
5. Loosen heat shield clamps on both the front and rear head pipes.
6. If equipped, loosen crossover pipe clamp, located between front and rear head pipes.
7. Remove two cylinder exhaust port flange nuts from each head pipe, located at the cylinder head.
8. Remove the bolts that attach mufflers to mounting bracket.
9. Remove the complete exhaust system and set aside. Assistance may be required.
10. Remove stock mounting bracket from motorcycle frame and set it aside.
11. On models (07-12) use a 7/8" or 22mm wrench, carefully remove the O² sensors from the stock head pipes and save for re-use with the new Freedom Performance exhaust system, on models (13-up) use a 14mm wrench. It may be necessary to use penetrating oil to ease the removal.
12. Now remove exhaust port flanges and retaining rings from the stock exhaust system using snap ring pliers. It is best to wear safety glasses when removing retaining rings to prevent eye injuries.
13. Some models have the passenger peg mounted to exhaust mounting bracket, if this is the case remove peg from bracket and save for re-use.
14. Lastly remove the two lower mounting studs from the frame.



Note: use good and safe practices when removing and installing your new exhaust system to prevent injuries that includes but is not limited to such safety glasses and gloves. When installing make sure gloves are not abrasive or damage may occur like scratching parts. Always secure motorcycle before any work is done.

1. Remove exhaust system from protective packaging it has been pre-assembled for easy installation. Place them in a non-abrasive surface such as a blanket or carpet. By doing this you can avoid scratching the parts in the in installation process. We recommend using painters tape to cover parts and accessories on areas where damage can occur during installation.
2. Install exhaust port flanges and retaining rings (from stock system) onto head pipes. *(See figure 2.1)* (FREEDOM PERFORMANCE recommends replacement of exhaust port gaskets if damaged or worn out, Harley part number: 17048-98 or 65324-83A)
3. Models without O2 sensors a plug must be installed in the header bung. The headers have an 18mm x 1.50 threads use the adapter and plug included in the kit to plug Oxygen sensor bungs. *(See figure 2.2)* Models equipped with oxygen sensors Install oxygen sensor (from stock). If you have 18mm sensor just install the sensor as is with no other hardware. *(See figure 2.3)* if you have 12mm sensors install the adapter first then the sensor. *(See figure 2.4)* apply a small amount of anti-seize compound to the threads of the O2 sensors and install them into the new head pipes. NOTE: Be careful not to get anti-seize on sensor tip, it may affect sensor functionality.
4. Attach mounting bracket **MBK-S130-F4** *(See figure 2.5)* using a 9/16 socket or wrench to motorcycle frame using 3/8-16 x 3/4" flange screws (supplied) (If equipped, plastic plugs must be removed).
5. Slide 1 Barrel clamp (# 60) in front of the slotted end of each muffler **NOTE: the screw head on the top muffler must face up and towards transmission, the lower muffler must have clamp screw head face down, this is to make it easy when tightening the clamp after shields are in place.** *(See figure 2.6)*
6. Install front head pipe first, **S280-F1** bring stock flange nuts all the way but do not tighten at this time yet, use a 1/2" socket or drive screw.
7. Repeat step with rear head pipe **S281-F1**. *(See figure 2.7)*
8. Install twin muffler, align muffler inlets with both front and rear headers and slide muffler over pipes. Align brackets welded on the mufflers to engage system to mounting bracket using four 5/16-18 flange serrated bolts. **DO NOT TIGHTEN AT THIS TIME YET.** *(See figure 2.8)* **NOTE: make sure front end of both brackets is flush with mounting bracket to ensure that head pipes have gone inside muffler inlet just enough to prevent exhaust leaks.**
9. Align both pipes, tighten to mounting bracket using a 1/2" open wrench (4 screws) now tighten exhaust port flange nuts using a 1/2" socket. **Do not tighten barrel clamps yet.** *(See figure 2.9)*
10. Install heat shields. For these steps it is imperative to use caution, space is very tight and scratches may occur. We recommend to use painters tape, cut a small piece and tape it over the heat shield where the clips are located *(these are the clips welded inside the heat shield)* now mark the center of the clip with a pen or marker also mark an arrow pointing the direction of hose clamp insertion as seen of the picture. *(See figure 2.10)*
11. Install only one hose clamp (#28) at the end of each curved heat shield. Just give the screw a couple of turns. *(See figure 2.11)*
12. Slide the front shield (**S282-F3**) over the front muffler and pipe. *(See figure 2.12)* and carefully align it. Now insert the worm clamps in the direction of the arrow. *(See figure 2.13)* Use clamps as follow: (#24) over the header (#28) over the muffler.
13. Repeat step with the rear heat shield (**S283-F3**) Note: we recommend for you to cover front heat shield on top right below where the rear pipe system is to be installed with a non-abrasive rag or painters tape to prevent scratches during installation of rear shield. *(See figure 2.14)*
14. Align heat shields and tighten clamps using a 5/16 nut driver. Using a 5mm hex key wrench, tighten both barrel band clamps.
15. Reinstall front passenger floor board in some model it may be necessary to install spacers to the floor board for clearance.
16. On models equipped with oxygen sensors re-route and engage harness, (07-12) install a plastic zip-tie to hold front sensor cable to frame as it was originally and cut-off excess tail. Make sure cables do not make contact to any part of the exhaust to prevent heat damages.
17. If passenger peg was removed from stock bracket, re-install it using the provided socket head cap screw 3/8"-16 x 2-1/2"
18. Check for adequate clearance between all exhaust system components and motorcycle accessories prone to heat damage.
19. Clean exhaust system with some chrome cleaner and remove painters tape (if used during installation) before turning on engine. Failure to follow this procedure may result in damages to the chrome finish as oils burn out leaving permanent marks.

Note: Be sure to tighten all hardware before starting your engine. Retighten after the first 100 miles.

Re-jetting/re-mapping is strongly recommended by FREEDOM PERFORMANCE

Every attempt has been made to provide improved cornering Clearance. However, due to design and space boundaries on some motorcycle models, ground and cornering clearance may not be improved and in some cases may even be reduced.

WARNING!
FREEDOM PERFORMANCE DOES NOT WARRANTY ANY CHROME OR BLACK FINISH PRODUCTS AGAINST DISCOLORATION.

Note: use good and safe practices when removing and installing your new exhaust system to prevent injuries that includes but is not limited to such safety glasses and gloves. When installing make sure gloves are not abrasive or damage may occur like scratching parts. Always secure motorcycle before any work is done.



Figure 2.1 install flange and retaining clip

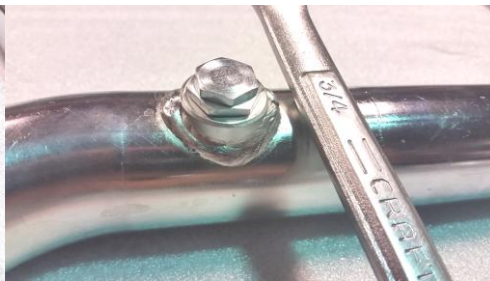


Figure 2.2 install adapter and plug



Figure 2.3 install O2 sensor

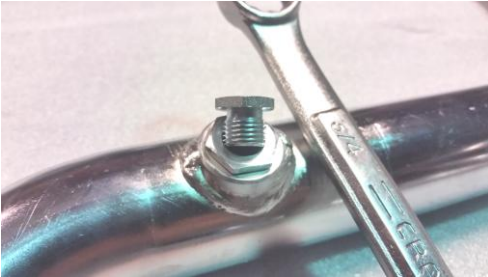


Fig 2.4 install adapter then 12mm sensor



Figure 2.5 install mounting bracket

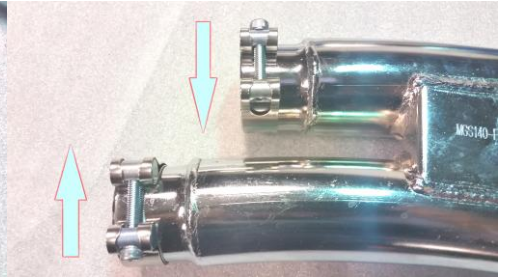


Figure 2.6 install barrel band clamps



Figure 2.7 install headers



Figure 2.8 front of brackets align flush



Figure 2.9 headers go inside about 1-3/8"



Figure 2.10 mark center and direction



Figure 2.11 install hose clamps only one on each heat shield at the end (#28)



Figure 2.12 install front heat shield first and secure it with hose clamps.

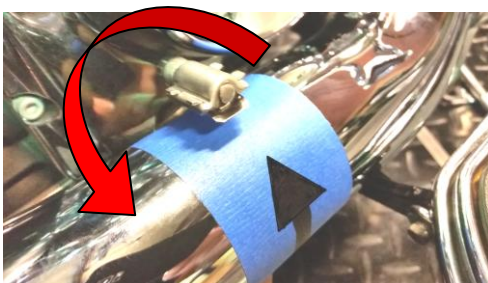


Figure 2.13 arrow indicates direction of insertion. Refer to figure 2.10



Figure 2.14 install rear heat shield and secure it with hose clamps



Figure 2.15 hardware

Note: use good and safe practices when removing and installing your new exhaust system to prevent injuries that includes but is not limited to such safety glasses and gloves. When installing make sure gloves are not abrasive or damage may occur like scratching parts. Always secure motorcycle before any work is done.