

Note: use good and safe practices when removing and installing your new exhaust system to prevent injuries that includes but is not limited to such safety glasses and gloves. When installing make sure gloves are not abrasive or damage may occur like scratching parts. Always secure motorcycle before any work is done.

remove peg from bracket and save for re-use.

14. Lastly remove the two lower mounting studs from the frame.

1. Remove exhaust system from protective packaging it has been pre-assembled for easy installation. Place them in a non-abrasive surface such as a blanket or carpet. By doing this you can avoid scratching the parts in the installation process. We recommend using painters tape to cover parts and accessories on areas where damage can occur during installation.
2. Install exhaust port flanges and retaining rings (from stock system) onto head pipes. *(See figure 2.1)* (FREEDOM PERFORMANCE recommends replacement of exhaust port gaskets if damaged or worn out, Harley part number: 17048-98 or 65324-83A)
3. Models without O2 sensors a plug must be installed in the header bung. The headers have an 18mm x 1.50 threads use the adapter and plug included in the kit to plug Oxygen sensor bungs. *(See figure 2.2)* Models equipped with oxygen sensors Install oxygen sensor (from stock). If you have 18mm sensor just install the sensor as is with no other hardware. *(See figure 2.3)* if you have 12mm sensors install the adapter first then the sensor. *(See figure 2.4)* apply a small amount of anti-seize compound to the threads of the O2 sensors and install them into the new head pipes. NOTE: Be careful not to get anti-seize on sensor tip, it may affect sensor functionality.
4. Attach mounting bracket **MBK-S130-F4** *(See figure 2.5)* using a 9/16 socket or wrench to motorcycle frame using 3/8-16 x 3/4" flange screws (supplied) (If equipped, plastic plugs must be removed).
5. Slide 1 Barrel clamp (# 60) in front of the slotted end of each muffler **NOTE: the screw head on the top muffler must face up and towards transmission, the lower muffler must have clamp screw head face down, this is to make it easy when tightening the clamp after shields are in place.** *(See figure 2.6)*
6. Install front head pipe first, **S280-F1** bring stock flange nuts all the way but do not tighten at this time yet, use a 1/2" socket or drive screw.
7. Repeat step with rear head pipe **S281-F1**. *(See figure 2.7)*
8. Install twin muffler, align muffler inlets with both front and rear headers and slide muffler over pipes. Align brackets welded on the mufflers to engage system to mounting bracket using four 5/16-18 flange serrated bolts. **DO NOT TIGHTEN AT THIS TIME YET.** *(See figure 2.8)* **NOTE: make sure front end of both brackets is flush with mounting bracket to ensure that head pipes have gone inside muffler inlet just enough to prevent exhaust leaks.**
9. Align both pipes, tighten to mounting bracket using a 1/2" open wrench (4 screws) now tighten exhaust port flange nuts using a 1/2" socket. **Do not tighten barrel clamps yet.** *(See figure 2.9)*
10. Install heat shields. For these steps it is imperative to use caution, space is very tight and scratches may occur. We recommend to use painters tape, cut a small piece and tape it over the heat shield where the clips are located **(these are the clips welded inside the heat shield)** now mark the center of the clip with a pen or marker also mark an arrow pointing the direction of hose clamp insertion as seen of the picture. *(See figure 2.10)*
11. Install only one hose clamp (#28) at the end of each curved heat shield. Just give the screw a couple of turns. *(See figure 2.11)*
12. Slide the front shield (**S280-F3**) over the front muffler and pipe. *(See figure 2.12)* and carefully align it. Now insert the worm clamps in the direction of the arrow. *(See figure 2.13)* Use clamps as follow: (#24) over the header (#28) over the muffler.
13. Repeat step with the rear heat shield (**S281-F3**) Note: we recommend for you to cover front heat shield on top right below where the rear pipe system is to be installed with a non-abrasive rag or painters tape to prevent scratches during installation of rear shield. *(See figure 2.14)*
14. Align heat shields and tighten clamps using a 5/16 nut driver. Using a 5mm hex key wrench, tighten both barrel band clamps.
15. Install system end caps using a 5/32" hex key wrench and screws with washers provided. *(See figure 2.15)*
16. Reinstall front passenger floor board in some model it may be necessary to install spacers to the floor board for clearance.
17. On models equipped with oxygen sensors re-route and engage harness, (07-12) install a plastic zip-tight to hold front sensor cable to frame as it was originally and cut-off excess tail. Make sure cables do not make contact to any part of the exhaust to prevent heat damages.
18. If passenger peg was removed from stock bracket, re-install it using the provided socket head cap screw 3/8"-16 x 2-1/2"
19. Check for adequate clearance between all exhaust system components and motorcycle accessories prone to heat damage.
20. Clean exhaust system with some chrome cleaner and remove painters tape (if used during installation) before turning on engine. Failure to follow this procedure may result in damages to the chrome finish as oils burn out leaving permanent marks.

Note: Be sure to tighten all hardware before starting your engine. Retighten after the first 100 miles.

Re-jetting/re-mapping is strongly recommended by FREEDOM PERFORMANCE

Every attempt has been made to provide improved cornering Clearance. However, due to design and space boundaries on some motorcycle models, ground and cornering clearance may not be improved and in some cases may even be reduced.

WARNING!

FREEDOM PERFORMANCE DOES NOT WARRANTY ANY CHROME OR BLACK FINISH PRODUCTS AGAINST DISCOLORATION.

Note: use good and safe practices when removing and installing your new exhaust system to prevent injuries that includes but is not limited to such safety glasses and gloves. When installing make sure gloves are not abrasive or damage may occur like scratching parts. Always secure motorcycle before any work is done.



Figure 2.1 install flange and retaining clip

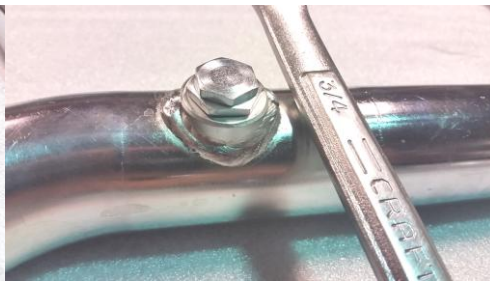


Figure 2.2 install adapter and plug



Figure 2.3 install O2 sensor

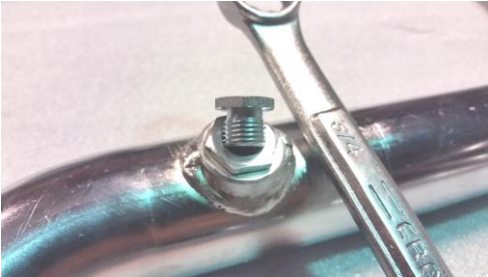


Fig 2.4 install adapter then 12mm sensor



Figure 2.5 install mounting bracket

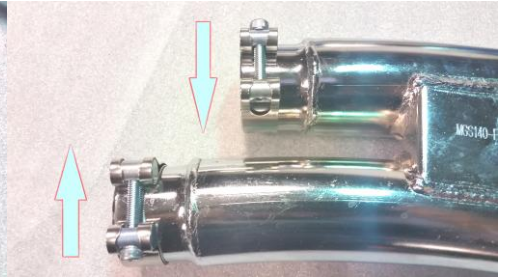


Figure 2.6 install barrel band clamps



Figure 2.7 install headers



Figure 2.8 front of brackets align flush



Figure 2.9 headers go inside about 1-3/8"



Figure 2.10 mark center and direction



Figure 2.11 install hose clamps only one on each heat shield at the end (#28)



Figure 2.12 install front heat shield first and secure it with hose clamps.



Figure 2.13 arrow indicates direction of insertion. Refer to figure 2.10



Figure 2.14 install rear heat shield and secure it with hose clamps

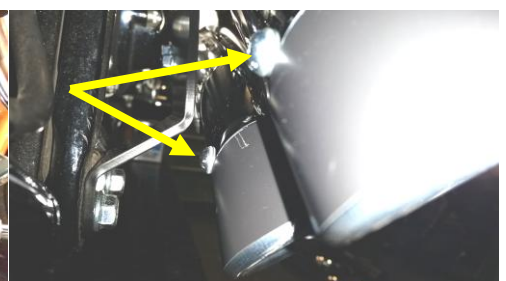


Figure 2.15 install end caps use locking glue and screw with split washer.

Note: use good and safe practices when removing and installing your new exhaust system to prevent injuries that includes but is not limited to such safety glasses and gloves. When installing make sure gloves are not abrasive or damage may occur like scratching parts. Always secure motorcycle before any work is done.