

### MIRROR ADAPTERS FOR TRIUMPH

1811

#### Thank You For Choosing Rolliès Speed Shop

Protect yourself and others from potential injury and property damage or loss. Pay close attention to all instructions, warnings, cautions, and notices regarding the installation, use, and care of this product.

#### **WARNING**

THIS INDICATION ALERTS YOU TO THE FACT THAT IGNORING THE CONTENTS DESCRIBED HEREIN CAN RESULT IN POTENTIAL DEATH OR SERIOUS INJURY.

#### **NOTICE**

This indication alerts you to the fact that ignoring the contents described herein may negatively affect product performance and functionality or damage the product itself or the product to which it is being attached.

#### ENSURE THAT THE FOLLOWING PARTS HAVE BEEN INCLUDED IN THE KIT:

- 2 Mirror Adapters
- 1 Installation Instructions

#### YOU WILL ALSO NEED:

Set of Metric combination wrenches, set of Metric hex wrenches, Blue (242) Loctite or equivalent

#### **NOTICE**

These installation instructions contain important information. Ensure that the end user receives this copy and is aware of its importance for future use.

- STEP 1** Read and understand all steps in the instructions before starting the installation. Park the motorcycle on a hard, level surface and turn **IGN OFF**.

#### **NOTICE**

Avoid damage to the motorcycle. Protect painted surfaces with a soft cloth or blanket.

- STEP 2** Refer to **PIC 1**. Remove the existing mirrors; save the mounting screws, they will be re-used. Ensure that the aluminum tolerance rings remain in the mounting holes; they will be reused.

- STEP 3** Refer to **PIC 2**. Follow the manufacturer's recommendations to prepare the external threads of the Mirror Adapter. Apply threadlocker to the threads of the Mirror Adapter.

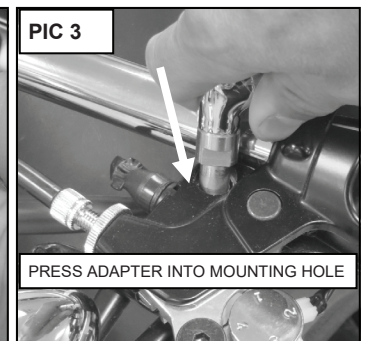
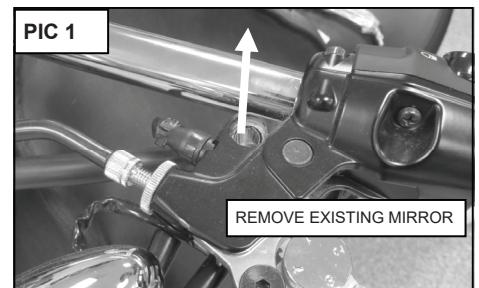
Thread the Adapters into the new mirror stems (mirrors available at - [Rolliesspeedshop.com](http://Rolliesspeedshop.com)).

- STEP 4** Use an open end wrench to tighten the Adapter onto the stem.

- STEP 5** Refer to **PIC 3**. Press the Adapter into the mounting hole; ensure that the tolerance ring is in place; thread screw from **STEP 2** into the stem.

- STEP 6** Adjust the stem as desired; use the open end wrench to hold the stem in place and tighten the screw below.

- STEP 7** Repeat for the other side.



#### **WARNING**

**BEFORE RIDING**, ENSURE THAT THE INSTALLATION OF THIS PRODUCT DOES NOT INTERFERE WITH THE PROPER OPERATION OF THE MOTORCYCLE.



## INSTALLATION INSTRUCTIONS

---

### **WARNING**

THE END USER'S SAFETY DEPENDS UPON PROPER INSTALLATION OF THIS PRODUCT. IF A STEP IN THESE INSTRUCTIONS IS NOT WITHIN YOUR CAPABILITIES OR YOU DO NOT HAVE THE CORRECT TOOLS, HAVE YOUR DEALER PERFORM THE PROCEDURE. IMPROPER INSTALLATION OF THIS PRODUCT COULD RESULT IN DEATH OR SERIOUS INJURY.

### **NOTICE**

It is the end user's responsibility to ensure that all fasteners (including pre-assembled) are tightened before operation of the motorcycle. RSS will not provide warranty coverage on products or components lost or damaged due to improper installation or lack of maintenance. Periodic inspection and maintenance are required on all fasteners.