



Installation Instructions for Hawg Halters, Inc.
23" Wheel 2014 FL Model Triple Trees

**THIS PRODUCT IS DESIGNED FOR USE WITH THE INSTALLATION OF A
23" SIZE WHEEL OR LARGER ON A FL MODEL STOCK FRAME!**

**NOTE: PLEASE READ INSTRUCTIONS FULLY BEFORE STARTING
INSTALLATION AS VARIOUS MODELS REQUIRE SPECIFIC
COMPONENTS.**

**WARNING – FRONT END PERFORMANCE IS A CRITICAL SAFETY ITEM.
TRIPLE TREES SHOULD BE INSTALLED BY A QUALIFIED SERVICE
TECHNICIAN ONLY!!!!**

- 1. Make sure the motorcycle is properly secured when raised. Remember to balance it properly as you will be removing the complete front end.**
- 2. Remove the front wheel assembly, brakes and fender.**
- 3. Remove the fairing as necessary on batwing models, nacelle on Road King models and front and rear fork covers on Road Glide models. Remove the fork tube assemblies and then remove both the upper and lower triple trees. Finally disassemble the handlebars from the top triple tree.**
- 4. It is recommended the fork oil be drained at this time in preparation for the install of the internal fork travel limiters, item #12. Refer to your service manual for proper method of fork disassembly. The lower sliders need only be removed from the tubes to install the travel limiters.**
- 5. After reassembly, fill with fresh fork oil. We recommend a good quality 20W for added firmness and improved dampening.**
- 6. Refer to HHI drawing #45-1900 for a complete parts breakdown.**
- 7. Install the lower dust shield and new neck bearing purchased from your local H-D dealership. Replace the bearing race at this time if there are any signs of wear.**

8. Check the upper neck bearing and replace if necessary. Apply anti-seize to the threads of HD neck stem bolt, item #8.

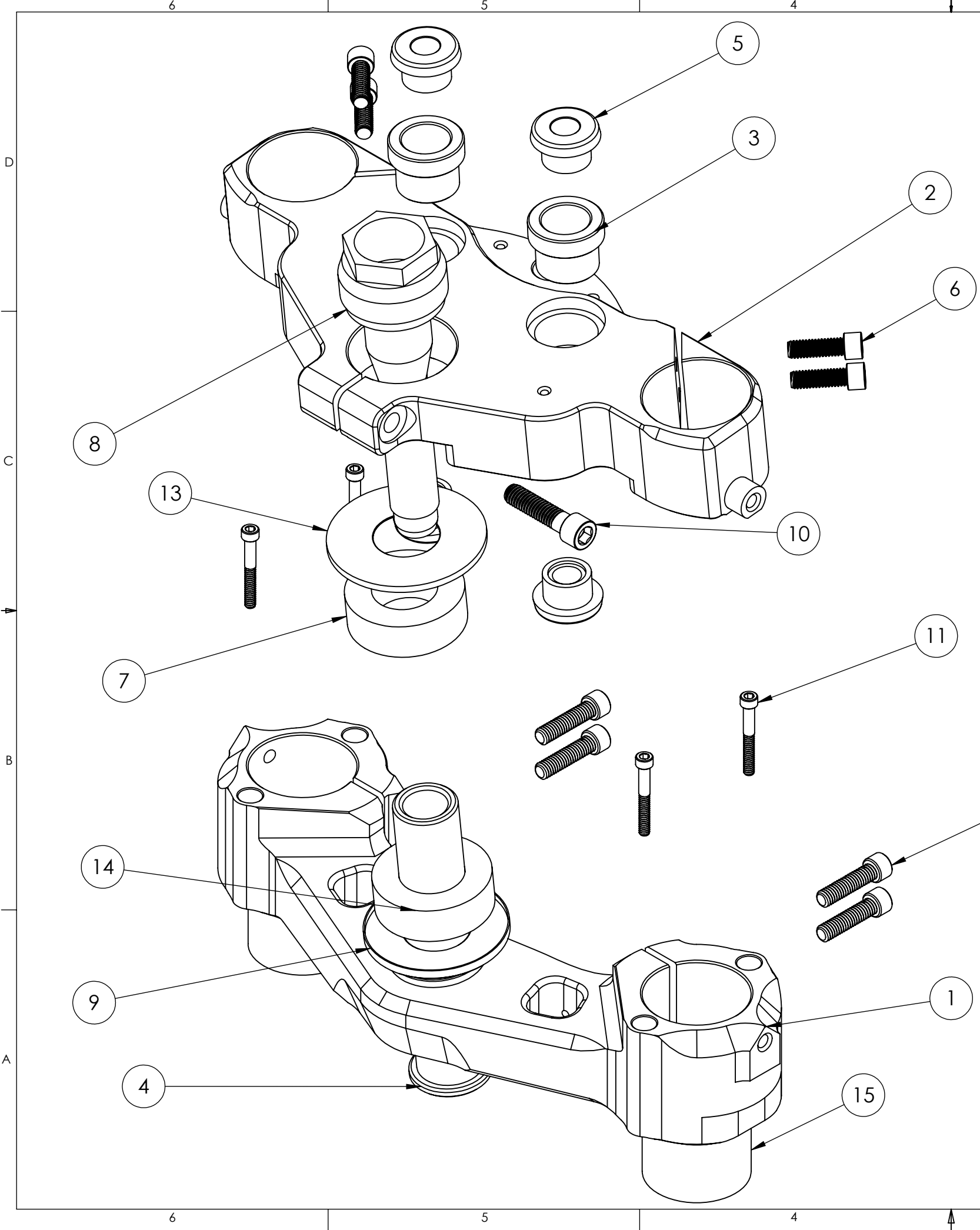
Page 2 Continued.

Installation Instructions for Hawg Halters, Inc. **23" Wheel 2014 FL Model Triple Trees**

9. Insert the stock riser bushing upper half in item #3 and place it in the top of the triple tree. Install the riser bushing lower half in the underside of the triple tree. Complete the install of the handlebars.
10. Install the lower triple tree assembly into the bottom of the frame neck and thread the upper neck bolt, item #8, into the lower neck stem until the bearings are in place.
11. Refer to your H-D 2014 Touring model service manual for proper neck bearing preload and torque procedures.
12. Reinstall lower fork covers at this time using item #11 of the supplied hardware. Apply blue Loctite to the screw threads.
13. Next, apply blue loctite to the screw threads of item #6 & #13. Install the four bolts into the upper and lower triple tree split clamp holes leaving the screws loose.
14. Check the fork tube bores for any sharp edges or burrs prior to installing the fork tubes. Position the fork tubes through the lower tree and into the upper tree aligning the top of the tube with the back edge of the top fork bore. Secure the fork tubes in both triple trees by tightening the 4 bolts in each tree to a torque of 25 ft.-lbs.
15. Install fender, front wheel, brake hose mount and brake caliper assembly per factory service manual specifications.
16. Reinstall factory fairing, nacelle and other remaining components.

All HAWG HALTERS, Inc. triple trees are guaranteed to be free from defects in material and workmanship for a period of one year from the date of purchase.

If you have any questions call:
TOLL FREE 1-877-HHALTER (442-5837)
HAWG HALTERS, INC.
389 Lumpkin County Parkway
Dahlonega GA 30533




| REVISIONS | | | |
|-----------|-------------|------|----------|
| LTR | DESCRIPTION | DATE | APPROVAL |
| | | | |
| | | | |
| | | | |
| | | | |

| ITEM | QTY | P/N | DWG # | DESCRIPTION |
|------|-----|--------------|----------|---------------------------------|
| 1 | 1 | 49FLMR6-L | 45-1902 | 49mm 6deg Lower Tree |
| 2 | 1 | 49FLMR6-U | 45-1901 | 49mm 6deg Upper Tree |
| 3 | 2 | 41FL-RBS-STK | 45-1203 | 41FL 6deg Riser Bushing Adaptor |
| 4 | 1 | NS-49FL | 45-1903 | 49FL Lower Neck Stem |
| 5 | 4 | -- | -- | H-D Riser Bushing |
| 6 | 4 | FAST-93255 | -- | 5/16-18 x 1.0 SHCS |
| 7 | 1 | -- | -- | H-D Neck Bearing |
| 8 | 1 | -- | -- | 49FL Upper Neck Stem (H-D) |
| 9 | 1 | -- | -- | 49FL Lower Dust Shield (H-D) |
| 10 | 1 | FAST-93309 | -- | 3/8-16 x 1 1/2 SHCS |
| 11 | 4 | FAST-0130554 | -- | 10-24 x 1 1/2 SHCS |
| 12 | 4 | FAST-93257 | -- | 5/16-18 x 1 1/4 SHCS |
| 13 | 1 | -- | -- | Upper Dust Shield H-D |
| 14 | 1 | -- | -- | H-D Neck Bearing Lower |
| 15 | 2 | 49FL-TLS | 49FL-TLS | BUMP STOP |

PROPRIETARY AND CONFIDENTIAL
THE INFORMATION CONTAINED IN THIS
DRAWING IS THE SOLE PROPERTY OF
HAWG HALTERS, INC. ANY
REPRODUCTION IN PART OR AS A WHOLE
WITHOUT THE WRITTEN PERMISSION OF
HAWG HALTERS, INC. IS
PROHIBITED.

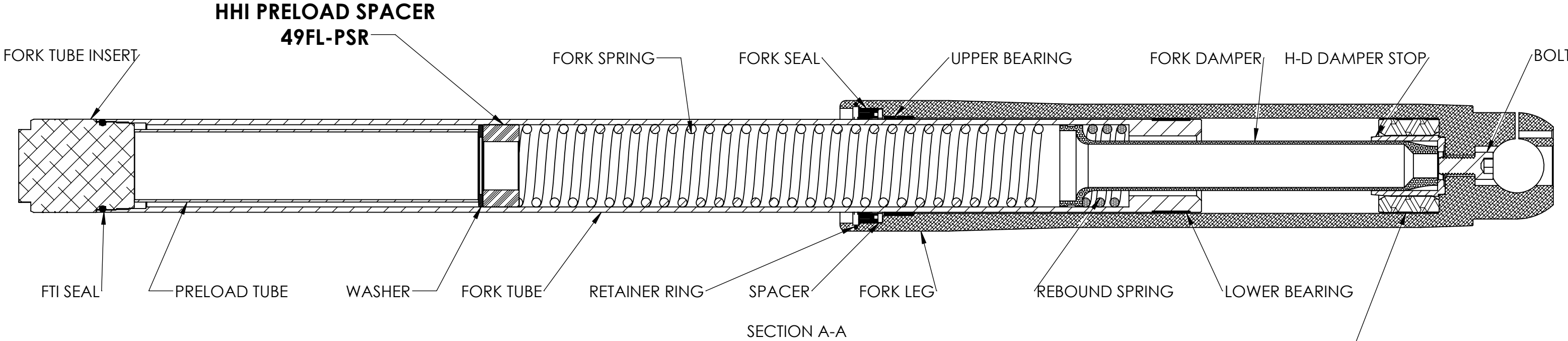
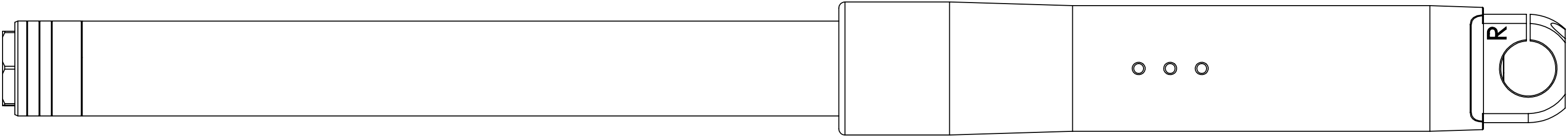
| | | | | | |
|-------------|---------|--|-------------|------|-----------|
| | | TOLERANCES UNLESS NOTED: X.X : +/- .03 X.XX : +/- .01 X.XXX : +/- .005 FRAC : +/- 1/16 ANGULAR : +/- 1° | | NAME | DATE |
| | | | DRAWN | NBG | 11/4/2013 |
| | | | CHECKED | | |
| | | | ENG APPR. | | |
| | | | MFG APPR. | | |
| | | MATERIAL | Q.A. | | |
| | | FINISH -- | STOCK SIZE: | | |
| NEXT ASSY | USED ON | | | | |
| APPLICATION | | DO NOT SCALE DRAWING | | | |



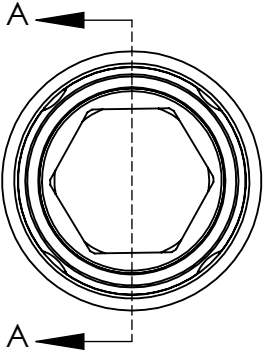
Hawg Halters, Inc.
389 Lumpkin County Parkway
Dahlonega, GA 30533

| | | |
|-----------|------------------|------|
| PART NO. | 49FL-X23 | |
| PART: | 49FL 6 DEG TREES | |
| ASSEMBLY: | 49FLX23 | |
| SIZE | DWG. NO. | REV. |
| B | 45-1900 | |

| REVISIONS | | | |
|-----------|-------------|------|----------|
| LTR | DESCRIPTION | DATE | APPROVAL |
| | | | |
| | | | |
| | | | |
| | | | |



**HHI TRAVEL LIMITER
49FL-TLS**



PROPRIETARY AND CONFIDENTIAL
THE INFORMATION CONTAINED IN THIS
DRAWING IS THE SOLE PROPERTY OF
HAWG HALTERS, INC. ANY
REPRODUCTION IN PART OR AS A WHOLE
WITHOUT THE WRITTEN PERMISSION OF
HAWG HALTERS, INC. IS
PROHIBITED.

| | | | | | | | |
|-------------|---------|--|-------------|------|----------|-----------|------|
| | | TOLERANCES UNLESS NOTED: X.X : +/- .03 X.XX : +/- .01 X.XXX : +/- .005 FRAC : +/- 1/16 ANGULAR : +/- 1° | NAME | DATE | PART NO. | | |
| | | | DRAWN | NBG | | 3/31/2014 | |
| | | | CHECKED | | | PART: | |
| | | | ENG APPR. | | | | |
| | | | MFG APPR. | | | ASSEMBLY: | |
| | | MATERIAL | Q.A. | | | | |
| | | | STOCK SIZE: | | | | |
| NEXT ASSY | USED ON | FINISH | -- | | | | |
| APPLICATION | | DO NOT SCALE DRAWING | | | SIZE | DWG. NO. | REV. |
| | | | | | B | 30-201 | |

HHI **Hawg Halters, Inc.**
389 Lumpkin County Parkway
Dahlonega, GA 30533