



X-26 BOLT-ON NECK KIT INSTALLATION INSTRUCTIONS

2014-Later TOURING MODELS

This document covers the installation of the above product and must be performed by a trained motorcycle technician familiar with the same. Always follow standard industry practices and specific model service manual procedures as applicable.

DOCUMENTATION

- DRAWING # 210-100
- HD SERVICE MANUAL

SPECIAL TOOLS REQUIRED

- 5/8" HEX BIT, 1/2" DRIVE SOCKET
- 5/16" HEX BIT, 3/8" DRIVE SOCKET
- TORQUE WRENCH, 1/2" DRIVE, 30-150 FT-LB
- TORQUE WRENCH, 3/8" DRIVE, 10-100 FT-LB
- IGNITION SWITCH ALIGNMENT TOOL
- BRAKE BLEED EQUIPMENT
- ABS SERVICE COMPUTER (IF EQUIPPED)

STANDARD TOOLS & MATERIALS REQUIRED

- STANDARD INCH HEX ALLEN WRENCH SET
- INTERNAL SNAP RING PLIER
- SOFT FACE DEAD BLOW HAMMER
- BALL PEEN HAMMER
- PUNCH OR DRIFT 12" LG
- 3/8" DRIVE RATCHET
- 1/2" DRIVE RATCHET
- 1/4" DRIVE 3" LONG EXTENSION
- REMOVABLE THREADLOCKER COMPOUND
- PERMANENT THREADLOCKER COMPOUND
- DOT 4 BRAKE FLUID

INSTALL PROCEDURE – BOLT-ON NECK

1. Refer to the assembly drawing 210-100-2 supplied in this kit and be sure all required components & tools are present before starting the install.
2. Secure motorcycle on a lift and disconnect battery. It is required to remove the gas tank on ABS equipped models.
3. Raise front wheel off the ground and remove entire front fairing and fork assembly.
4. Remove factory neck bearing races. The 2014-later neck casting allows for simple removal by using a punch and hammer to drive out the races. Otherwise use a traditional type bearing removal tool.
5. Apply permanent thread locking compound to the following hardware items; 4,5,6,11
6. Place Center Neck Section (CNS), item #1, over frame neck and insert bolt #11 through frame. Do not tighten bolt at this time.
7. Place Upper Neck Plate (UNP), item #2, on top of neck bearing pocket and insert hardware items #4 and 5, passing through the CNS while locating the large square boss of the UNP into the CNS square recess. Do not attempt to fully seat the UNP in the neck bearing pocket at this time.
8. Place Lower Neck Plate (LNP), item #3, into the lower neck bearing pocket and start threading the three fasteners from the UNP into the LNP until light resistance is felt.
9. Gently tap the LNP into the neck bearing pocket using a soft face dead blow hammer. Continue to tighten the three fasteners in equal portions while tapping on the LNP until it is fully seated in the lower neck bearing pocket.
10. The LNP must be fully seated before the UNP. At this time you will be able to install the fastener item #6 in the LNP, however do not tighten at this time.
11. Continue to install the UNP until it is fully seated with the CNS and upper neck bearing pocket. Torque item #4 to 125 ft-lbs. and items #5 to 35 ft-lbs.
12. Install Snap Rings, items #13 & 14, at this time.

Cont'd.

INSTALL PROCEDURE – TRIPLE TREE

13. Refer to dwg #210-100-3. Grease both Neck Bearings, items #14. Install Dust Seal, #13 on Neck Stem, #31 followed by Neck Bearing. Install Dust Shield, #15, followed by the remaining Neck Bearing on Neck Stem Bolt, #4.
14. Install Lower Tree assembly, #2 into the Bolt-on Neck assembly and thread Neck Stem Bolt in by hand until just hand tight. Do not use thread locker.
15. Apply removeable thread locker to the supplied four fasteners, items #6 and place in the Lower Tree to install your fork covers. We recommend a 2" extended length cover be used. Torque these fasteners to 5 ft-lbs.
16. Remove factory ignition/lock switch and handlebar riser assembly from the factory upper triple tree. Transfer Ignition Switch and factory hardware to the new Upper Triple Tree using removeable thread locker.
17. Install supplied Riser Bushing assembly, items #8, 9 & 10, into Upper Triple Tree. Mount the factory handlebar lower riser using supplied fasteners, item #7, applying permanent thread locker compound. Torque these fasteners to 75 ft-lbs.
18. Position the Upper Tree, #3, in place on the Neck Stem Bolt. Apply removeable thread locker compound to all eight fasteners, item #5, and fastener #12. Install the fasteners accordingly in both Upper and Lower Triple Tree, do not tighten.
19. Install right and left side fork tube assembly at this time. Hand tighten the fasteners #5 in the Upper Tree only. This will help insure the Upper Tree is properly seated against the top dust shield. No gap should exist between the Upper Tree and Dust Shield.
20. Set the steering head bearing torque at this time following this sequence of steps; Tighten the Neck Stem Bolt, #4, to 40 ft-lbs of torque. Now loosen the Neck Stem Bolt a quarter turn (90 deg) and then retorque same to 20 ft-lbs. You should now be able to swing the triple tree assembly left to right with a smooth but firm feel of resistance. This is normal and results from the friction caused by the rubber seal.
21. Tighten fastener #12 in the Upper Tree to 35 ft-lbs. Tighten the two lower clamp hole fasteners, #5, in the Upper Tree to 25 ft-lbs. Tighten the upper clamp hole fasteners, #5, to 15 ft-lbs.
22. Tighten the Lower Tree fork clamping fasteners, #5, as follows; Torque each fastener progressively in increments of 5 ft-lbs to a maximum of 25 ft-lbs.

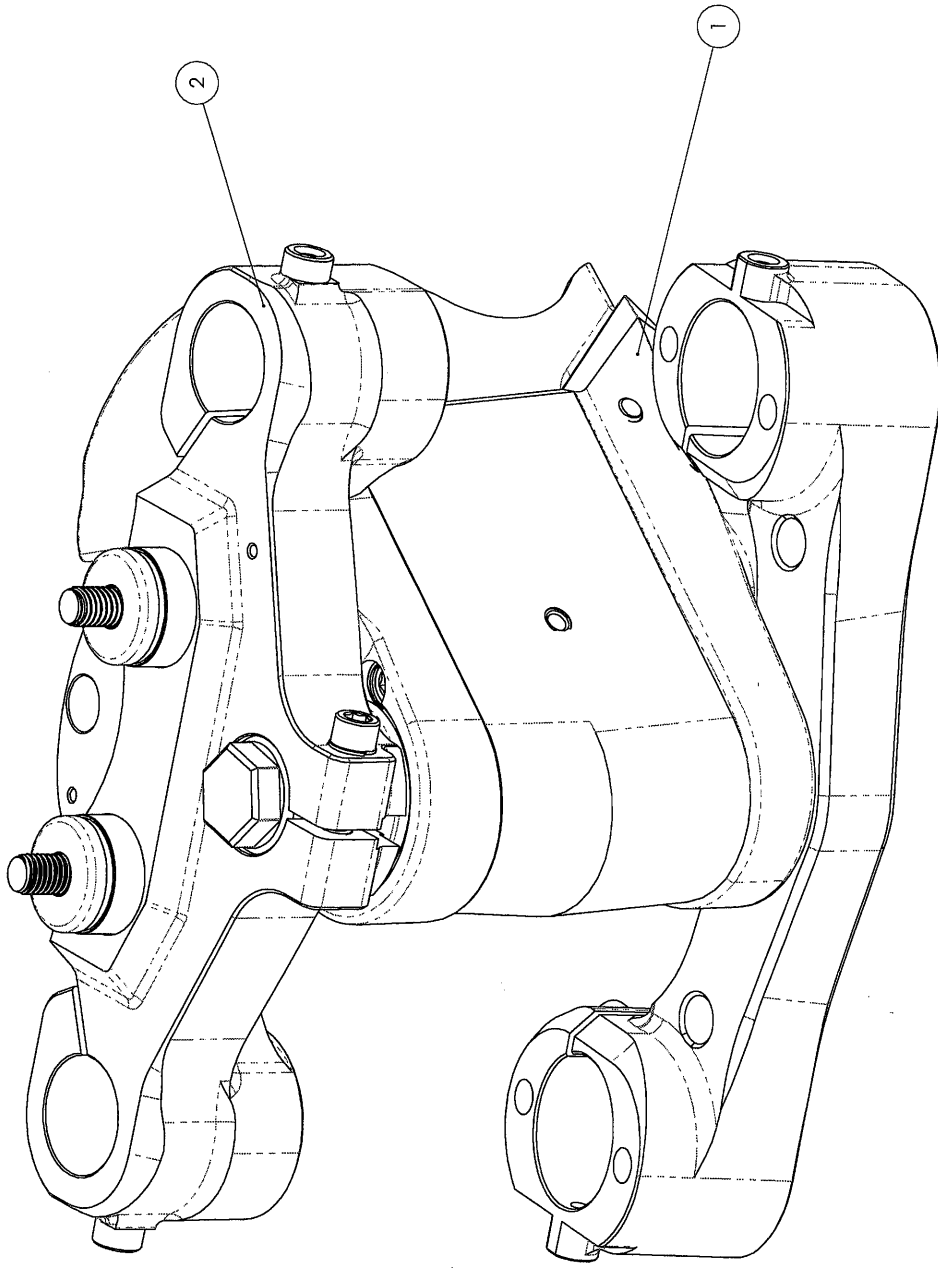
Cont'd.

23. Reinstall handlebar assembly followed by replacement brake and clutch hose kits and factory nacelle assembly.
24. Check clearances and free movement of handlebar, controls and fork assembly at this time.
25. Reinstall inner fairing assembly using factory hardware.
26. Install new fender, wheel and brakes as applicable at this time. Again check for clearances and free movement of your new front end assembly.
27. Attached brake and clutch lines, bleed accordingly and test for proper brake and clutch function.
28. Reinstall gas tank and any other items removed in preparation for your initial test ride.
29. Ride safe and enjoy.

All HAWG HALTERS, Inc. Bolt On Neck Kits are guaranteed to be free from defects in material and workmanship for a period of one year from the date of purchase.

If you have any questions call:
TOLL FREE 1-877-HHALTER (442-5837)
HAWG HALTERS, INC.
389 Lumpkin County Parkway
Dahlonega GA 30533

ITEM NO.	PART NO.	DRAWING NO.	DESCRIPTION	Default/ QTY.
1	49FLX26-5-BON	SHEET 2	BOLT-ON-NECK, 2014-UP, FL, 26" WHEEL	1
2	49FLX26-7	SHEET 3	TRIPLE TREE, BON, 2014-UP, 49mm, 8 DEGREE, 26" WHEEL	1



Hawg Halters, Inc. 5881 Highway Dalton, GA 30723	
PART NO.	49FL-X26-14
PART	BOLT ON NECK
ASSEMBLY	2014-UP, BOLT ON NECK FL 26" WHEEL
DATE	11/1/2017
REV	210-100

NAME	DATE
TEZ	11/1/2017

DRAWN	CHECKED	DATE
ENG APPR	DATE	
MFG APPR	DATE	
DATE		

STOCK SIZE	
------------	--

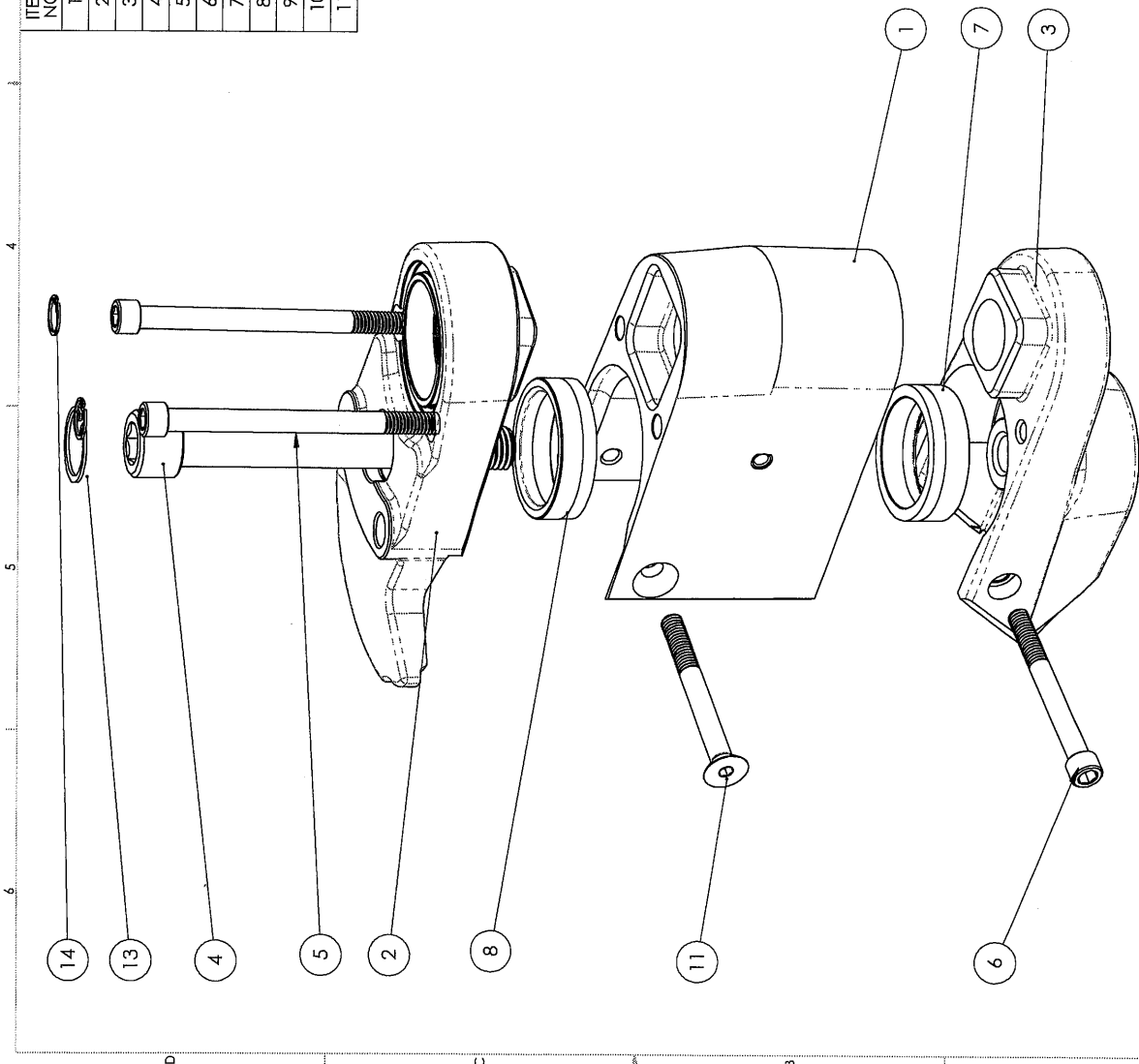
TOLERANCES UNLESS NOTED:	
FRACTIONS: 1/16, 1/8, 3/16, 1/4, 3/8, 1/2, 5/8, 3/4, 7/8, 1	
DECIMALS: .005, .010, .015, .020, .030, .040, .050, .060, .070, .080, .090, .100	
ANGLES: 1/2°, 1°, 1 1/2°, 2°, 3°, 4°, 5°, 6°, 8°, 10°, 15°, 20°, 30°, 45°, 60°, 90°, 120°, 150°, 180°	
FINISH	
DATE	

DO NOT SCALE DRAWING	2
----------------------	---

PROPERTY AND CONFIDENTIAL INFORMATION CONTAINED HEREIN IS THE SOLE PROPERTY OF HAWG HALTERS, INC. ANY REPRODUCTION OR DISTRIBUTION WITHOUT THE WRITTEN PERMISSION OF HAWG HALTERS, INC. IS PROHIBITED.

1 2 3 4 5 6

ITEM NO.	PART NUMBER	DRAWING NO.	DESCRIPTION	QTY.
1	49FLX26-4-CNS	210-102	CENTER SECTION, BOLT-ON NECK, 2014-UP, X26	1
2	49FLX26-5-UNP	210-201	UPPER PLATE, BOLT-ON NECK, 5 DEGREE, 2014-UP, X26	1
3	49FLX26-5-LNP	210-203	LOWER PLATE, BOLT-ON NECK, 5 DEGREE, 2014-UP, X26	1
4	XXX	--	3/4-10 x 6.00 SHCS, SS	1
5	XXX	--	3/8-16 x 5.00, SHCS, SS	2
6	XXX	--	3/8-16 x 3.50, SHCS, BLACK OXIDE	1
7	49FLX26-BSL	210-108	BEARING POCKET SLEEVE, LOWER, BOLT-ON NECK, 2014-UP, X26	1
8	49FLX26-BSU	210-109	BEARING POCKET SLEEVE, UPPER, BOLT-ON NECK, 2014-UP, X26	1
9	MCM-91580A224	--	SNAP RING, 1 3/16 Ø HOLE	1
10	MCM-91580A171	--	SNAP RING, .625 Ø HOLE, SS	2
11	XXX	--	3/8-16 x 3.50, SFHS, SS, BLACK OXIDE	1



PROPRIETARY AND CONFIDENTIAL
 THE INFORMATION CONTAINED IN THIS
 DRAWING IS THE SOLE PROPERTY OF
 HAWG HALTERS, INC. ANY
 REPRODUCTION OR TRANSMISSION
 WITHOUT THE WRITTEN PERMISSION OF
 HAWG HALTERS, INC. IS
 PROHIBITED.

Hawg Halters, Inc.
 588 Lakeside Dr.
 Marietta, GA 30067

PART NO. 49FL-X26-14
 PART BOLT ON NECK
 ASSEMBLY 2014-UP, BOLT ON NECK
 FL 26° WHEEL
 SHEET NO. 210-100
 REV. B

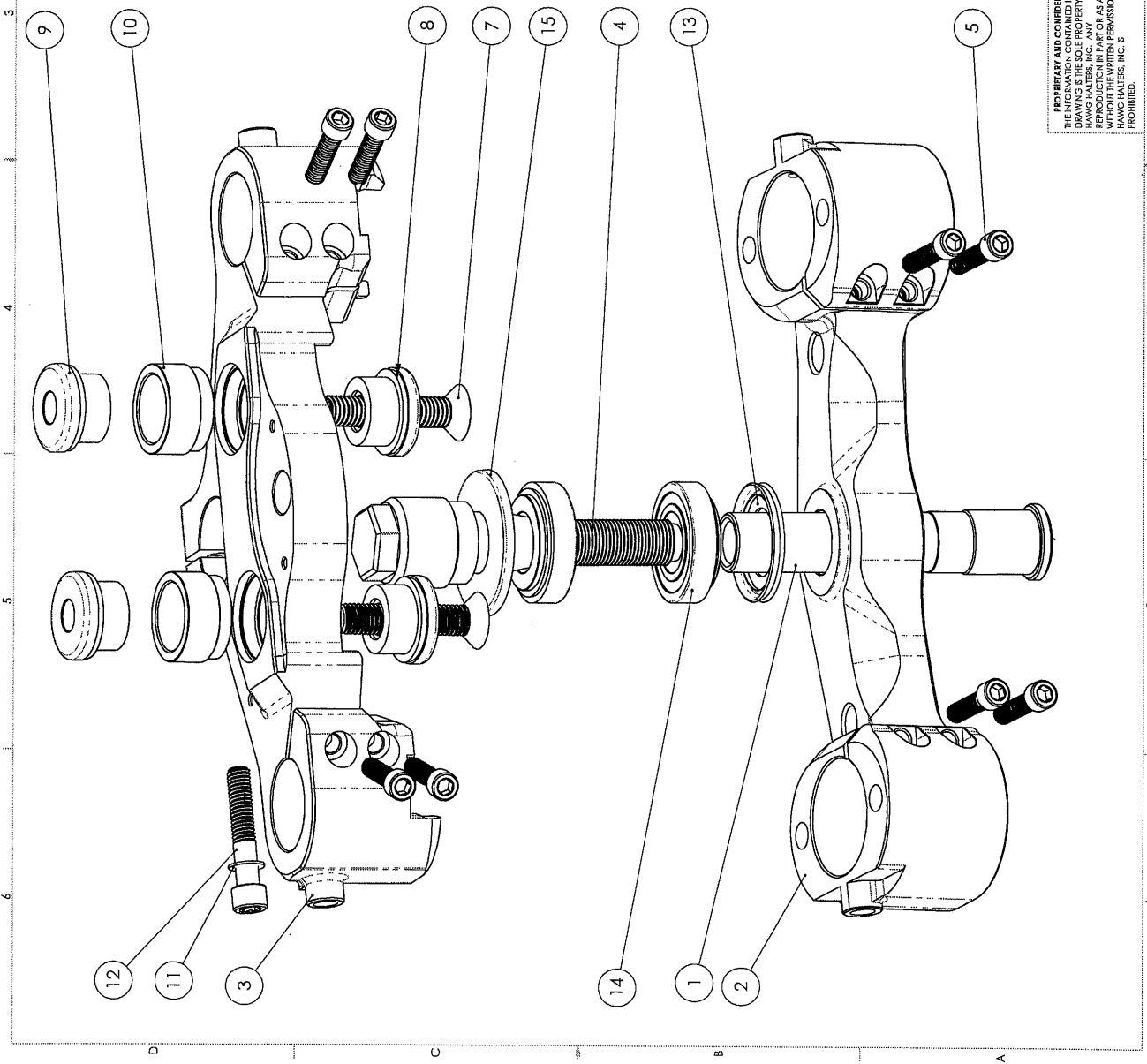
DATE	NAME	DRAWN	CHECKED	DATE
11/11/2017	TE			

TOLEANCES UNLESS NOTED:
 X.XX: ±.01
 X.XXX: ±.005
 ANGULAR: ±.1°
 FINISH: —
 MATERIAL: —
 STOCKS: —

DO NOT SCALE DRAWING

1 2 3 4 5 6

ITEM NO.	PART NUMBER	DRAWING NUMBER	DESCRIPTION	QTY.
1	NS-X26	210-107	NECK STEM, 49FLX26, BOLT-ON NECK	1
2	49FLX26-7L	210-105	LOWER TREE, 49FLX26, BOLT-ON NECK	1
3	49FLX26-7U	210-104	UPPER TREE, 49FLX26, BOLT-ON NECK	1
4	NS-X26-BT	210-106	NECK STEM BOLT, 49FLX26, BOLT-ON NECK	1
5	91251A585	--		8
6	98164A266	--		4
7	XXX	--	1/2-13 x 2.75, FHS, SS	2
8	RB-001L	--	HANDLEBAR BUSHING, LOWER	2
9	RB-001U	--	HANDLEBAR BUSHING, UPPER	2
10	49FLX26-RBS	210-112	RISER BUSHING SPACER, FLX26	2
11	XXX	--	3/8 LOCK WASHER, SS	1
12	XXX	--	3/8-16 x 2.00, SHCS, SS	1
13	XXX	--	DUST SHIELD, LOWER	1
14	XXX	--	ROLLER BEARING, 2 PC.	2
15	XXX	--	DUST SHIELD, UPPER	1



Hawg Halters, Inc.
 388 Littleton Court Parkway
 Littleton, CO 80120

49FLX26-7

TRIPLE TREE

2014-UP, BOLT ON NECK
 FL 26" WHEEL

210-100

NAME	DATE
TEZ	11/11/2017

DRAWN: TEZ
 CHECKED: []
 ENG APPR: []
 MFG APPR: []
 U.S.A.: []
 STOCK: []

TOLERANCES UNLESS NOTED:
 XXX: ±.01
 XX: ±.02
 X: ±.05
 FRA: ±.005
 ANGULAR: ±.1°

MATERIAL: []
 FINISH: []
 USED ON: []
 NEXT ASSY: []

DO NOT SCALE DRAWING

PROPRIETARY AND CONFIDENTIAL
 THE INFORMATION CONTAINED IN THIS DRAWING IS THE SOLE PROPERTY OF HAWG HALTERS, INC. ANY REPRODUCTION OR TRANSMISSION OF THIS INFORMATION WITHOUT THE WRITTEN PERMISSION OF HAWG HALTERS, INC. IS PROHIBITED.