



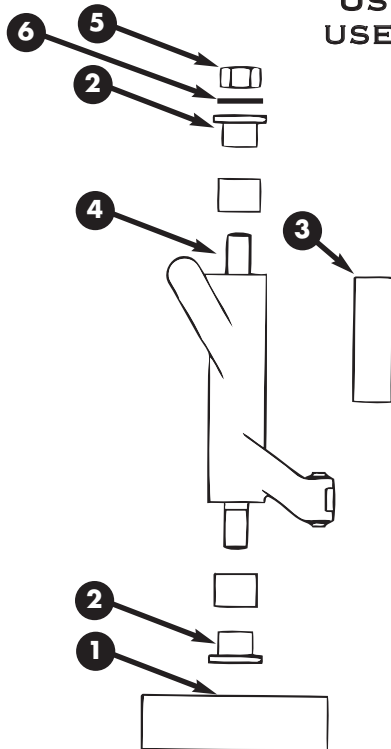
INSTRUCTION SHEET FOR TOOL NO.2357

ROCKER ARM BUSHING INSTALLATION TOOL

USE TO INSTALL ROCKER ARM BUSHINGS IN ROCKER ARMS WITH OR WITHOUT A PRESS.

USE ON BIG TWINS 1966-PRESENT

USE ON SPORTSTERS 1957-PRESENT



1. Refer to H-D® Service Manual for removal of rocker arms and JIMS catalog for replacement bushings.
2. Remove old rocker bushings using JIMS® Tool No.95760-57.
3. Before installing bushings, refer to H-D® Service Manual to correctly align oil holes.
4. Apply a press fit lube on bushings. Position rocker arm over stud on tool base with tool pilots and bushings in place. Install press bushing tube over stud. Re-check oil hole position and press on tube until both bushings bottom out. At this point the bushings will be installed at the correct depth.
NOTE: A nut and washer are provided if no press is available.
5. Ream bushings using JIMS Tool No.94804-57

PARTS AVAILABLE SEPARATELY

NO.	PART NO.	QTY.	DESCRIPTION
1	2357-1	1	BASE, PRESS BUSHING
2	2357-2	2	PILOT, PRESS BUSHING
3	2357-3	1	TUBE, PRESS BUSHING
4	2360	1	STUD, 3/8 - 16 X 6.0 LG.
5	2035	1	NUT, 3/8 - 16
6	2031	1	WASHER

CAUTION: WEAR SAFETY GLASSES. EXCESSIVE FORCE MAY DAMAGE PARTS! SEE JIMS® CATALOG FOR OVER 100 OTHER TOP QUALITY PROFESSIONAL TOOLS. THE LAST TOOLS YOU WILL EVER NEED TO BUY.

"From the Track... To the Street!"

555 DAWSON DRIVE, CAMARILLO, CA 93012 • PHONE 805-482-6913 • FAX 805-482-9224