



A Division of Thiessen Products, Inc.

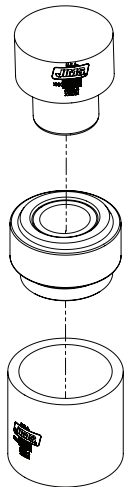
INSTRUCTION SHEET FOR TOOL NO. 5822

JIMS® No. 5822 Swingarm Bearing Installer is designed for use on 2002-present FLH Touring.

Note: Always wear safety glasses or other face and eye protection such as a full face shield. JIMS is not responsible for damage, injury, or your work. JIMS cannot be held liable for the quality and safety of your work.

Spherical Bearing Insert Removal and Installation Instructions

1. Refer to H-D® Service Manual for disassembly and removal of the swingarm.
2. Press out the spherical bearings according to the H-D Service Manual.
3. Place No. 5822-4 Cup on a hydraulic press plate. Place the spherical bearing over the No. 5822-4 Cup with the spacer down, inside the cup.
4. Place No. 5822-3 Driver into the top of the spherical bearing, aligned on top of the pressed in spacer.
5. Actuate the hydraulic press and drive the spacer out of the spherical bearing. Repeat for both bearings. Discard used bearings.
6. Place new bearing on press plate of hydraulic press. Lube inside of new bearing and outside of spacer shaft with Sunnen Press Lube or equivalent. Place spacer into opening of spherical bearing and press in until the upper edge of the spacer is flush with the top edge of the inner ring of the spherical bearing.
7. Repeat for the next bearing.



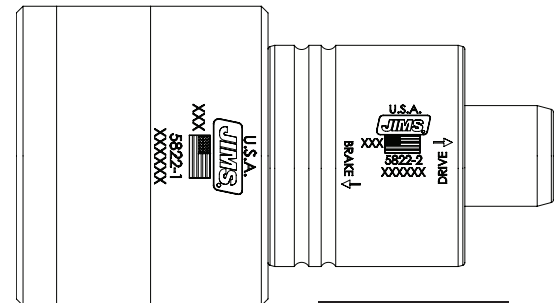
SPACER REMOVAL

Spherical Bearing Installation Instructions-Brake Side

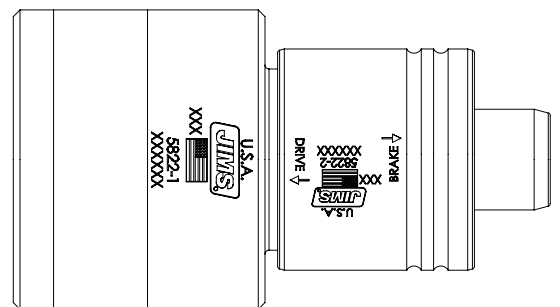
1. Refer to H-D Service Manual for disassembly and removal of the swingarm.
2. Slide the No. 5822-2 Driver onto the shaft of the No. 5822-1 Base with the word "BRAKE" towards the base.

NOTE: The brake side configuration is the shorter configuration of the installer and will bottom out on the swingarm.

3. Coat the outer surface of the bearing and the inner surface of the brake side swingarm bearing bore with Sunnen Press Lube or equivalent.
4. Place spherical bearing on No. 5822-1 Base shaft with the spacer facing away from the base.
5. Place swingarm on the press plate with the brake side facing up and support.
6. While holding the No. 5822 assembly and bearing combination together, place the bearing with spacer side down into the brake side bearing bore on the swingarm.
7. Actuate the hydraulic press and drive the bearing into the brake side bore until the shoulder on the No. 5822-1 Base contacts the swingarm. The bearing is now seated.
8. Remove the No. 5822 tool.



BRAKE SIDE



DRIVE SIDE

Performance Parts For Harley-Davidson Motorcycles



A Division of Thiessen Products, Inc.

INSTRUCTION SHEET FOR TOOL NO. 5822

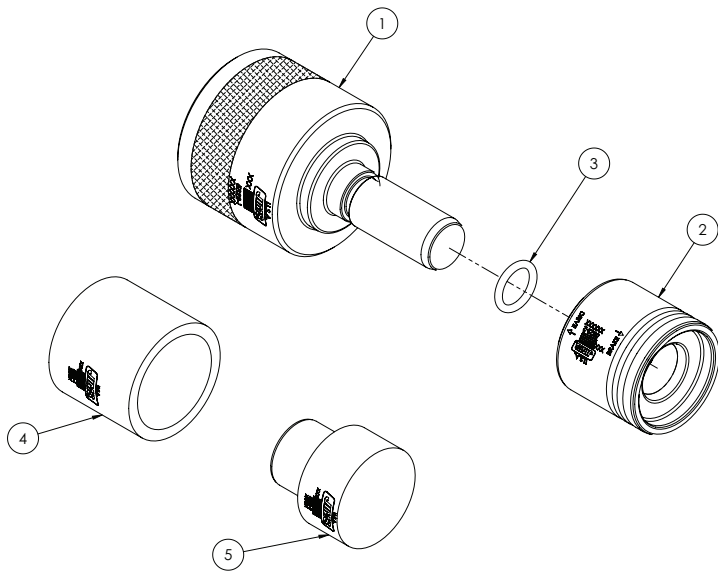
Spherical Bearing Installation Instructions-Drive Side

1. Refer to H-D Service Manual for disassembly and removal of the swingarm.
2. Slide the No. 5822-2 Driver onto the shaft of the No. 5822-1 Base with the word "DRIVE" towards the base.

NOTE: The drive side configuration is the longer configuration of the installer and will **NOT** bottom out on the swingarm.

3. Coat the outer surface of the bearing and the inner surface of the drive side swingarm bearing bore with Sunnen Press Lube or equivalent.
4. Place spherical bearing on No. 5822-1 Base shaft with the spacer facing away from the base.
5. Place swingarm on the press plate with the drive side facing up and support.
6. While holding the No. 5822 assembly and bearing combination together, place the bearing with spacer side down into the drive side bearing bore on the swingarm.
7. Actuate the hydraulic press and drive the bearing into the drive side bore until the bearing bottoms out in the swingarm. The No. 5822 will not contact the swingarm during installation of the drive side bearing. The bearing is now seated.
8. Remove the No. 5822 tool.

PARTS AVAILABLE SEPARATELY			
NO.	QTY.	DESCRIPTION	PART NO.
1	1	BASE	5822-1
2	1	DRIVER	5822-2
3	1	O-RING-113	5822-4
4	1	CUP	1199
5	1	DRIVER	5822-3
6	1	INSTRUCTION SHEET	1147-IS



Performance Parts For Harley-Davidson Motorcycles

555 DAWSON DRIVE, CAMARILLO, CA 93012 PHONE 805-482-6913 • FAX 805-482-9224
VISIT US ON THE WEB AT WWW.JIMSUSA.COM