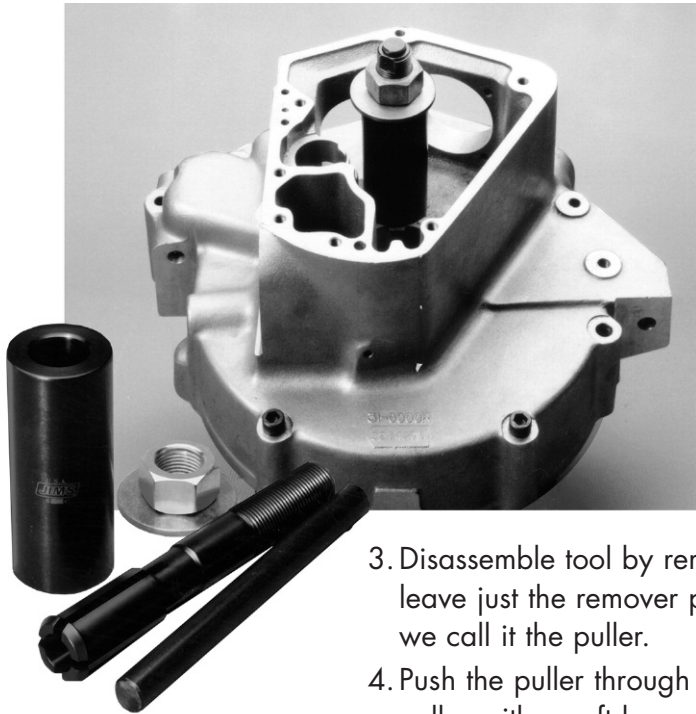




**INSTRUCTION SHEET FOR TOOL #95760-TB**

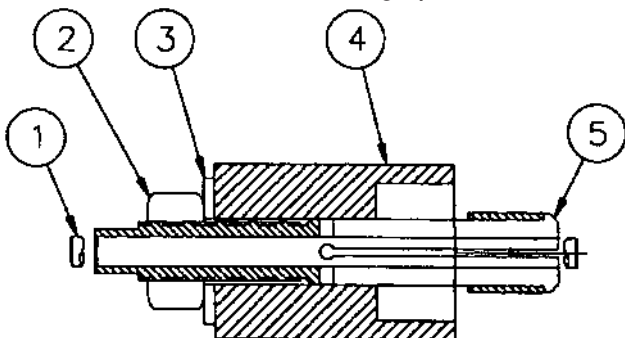


**INNER CAM BEARING REMOVER**  
USE ON BIG TWIN 1958-PRESENT SINGLE CAM ONLY.  
(NOTE: INCLUDES AFTERMARKET AND S&S® MOTORS)

*"Warning disconnect negative cable of battery to avoid accidental start ups"*

1. Refer to H.D.® Service Manual for removal of cam cover and tappet blocks.
2. Rotate flywheels until the timing mark on the pinion gear (the one for cam gear) is pointing straight down. This will give the most room behind cam bearing.
3. Disassemble tool by removing nut, brass washer, sleeve, and inner pin. This will leave just the remover portion of the tool #5 (the piece with the four grooves), we call it the puller.
4. Push the puller through cam bearing (grooved end first). You can tap end of puller with a soft hammer until the puller is completely through bearing.
5. Now install body #4 with puller bore towards bearing, next apply a little oil to washer #3 and nut #2.
6. Snug up nut, apply a little oil to the pin #1 and slip pin through center until flush with puller.
7. With your 1-1/8" wrench turn nut clock wise until bearing is pulled free of case (you may need to hold puller with your 5/8" wrench to keep it from turning).

*Use JIMS® tool #97272-60 or JIMS No.2188 to install your new bearing. It is highly recommended that you use a Torrington® bearing JIMS No.9058.*



PARTS AVAILABLE SEPARATELY			
No.	Qty.	Description	Part No.
1	1	DOWEL PIN	95760-TB-1
2	1	NUT	1098
3	1	BRASS WASHER	1099
4	1	BODY	95760-TB-4
5	1	PULLER	95760-TB-5

**CAUTION: WEAR SAFETY GLASSES. EXCESSIVE FORCE MAY DAMAGE PARTS! SEE JIMS® CATALOG FOR HUNDREDS OF TOP QUALITY PROFESSIONAL TOOLS. THE LAST TOOLS YOU WILL EVER NEED TO BUY.**

*Performance Parts For Harley-Davidson® Motorcycles*