



A Division of Thiessen Products, Inc.

INSTRUCTION SHEET FOR TOOL No. 973

TIMKEN BEARING OR ROLLER BEARING INNER RACE INSTALLER ADAPTER KIT

USE TO INSTALL H-D No. 9028 TIMKEN BEARING OR H-D No. 24004-03 ROLLER BEARING INNER RACE ONTO THE SPROCKET SHAFT.

USE ON BIG TWIN 2006 TO PRESENT FXD AND 2007 TO PRESENT FL & FXST.

ALSO FOR USE ON JIMS RACE ENGINES.

NOTE: Must be used in conjunction with JIMS® tool No. 97225-55

NOTE: Do not use impact tools on any flywheel assembly tool. Damage will occur to flywheels, bearings, case, and tools.

Read entire instruction sheet before starting this service. If you are not sure about this service, take to a professional repair shop.

Refer to your H-D® service manual, per application you are servicing for correct preparation to remove existing bearing or inner race.

1. Clean and inspect flywheel sprocket shaft for burrs or excessive wear. Replace if beyond wear limits.
2. Preassemble your JIMS No. 97225-55 tool as shown in **Fig 1** using items No. 1 thru No. 7 and lightly lube all threads. Then thread adapter, item No. 2 into lubed threaded end of item No. 3 with a light torque.
3. Lube sprocket shaft with a quality press fit lube. Position H-D No. 9028 Timken bearing with part numbers facing toward the flywheel on sprocket shaft. If you are installing a new Roller Bearing Assy. H-D No. 24004-03 place one of the 2 thrust washers onto the shaft with tapered I.D. facing flywheel and marked out facing you. Then you will need a heat gun and protective gloves to heat up the roller bearing inner race to no more than 210°. Then put heated race in position on sprocket shaft. Before race cools promptly use tool as follows.
4. Place slider tube item No. 1 and Item No. 7 over sprocket shaft with lower edge of slider tube sitting against either Timken bearing or heated bearing inner race.
5. Thread preassembled tool with a light torque into lubed hole on the end of sprocket shaft. It should look like **Fig 2** or **Fig 3** at this stage.
6. Turn clockwise tool nut item No. 5 with a 1-7/8" wrench until either Timken bearing or Inner bearing race bottoms out on base of flywheel.



**RACE
FIGURE 2**



**TIMKEN
FIGURE 3**

PARTS AVAILABLE SEPARATELY FOR TOOL No. 973

Item No.	Qty.	Description	Part No.
1	1	Slider	973-2
2	1	Adapter	973-1

PARTS AVAILABLE SEPARATELY FOR TOOL No. 97225-55

Item No.	Qty.	Description	Part No.
3	1	Mainbody	97225-55-1
4	1	Nut	1026B
5	1	Bearing & washers	2001/2002
6	1	Long handle	1028
7	1	Slider	97225-55-3

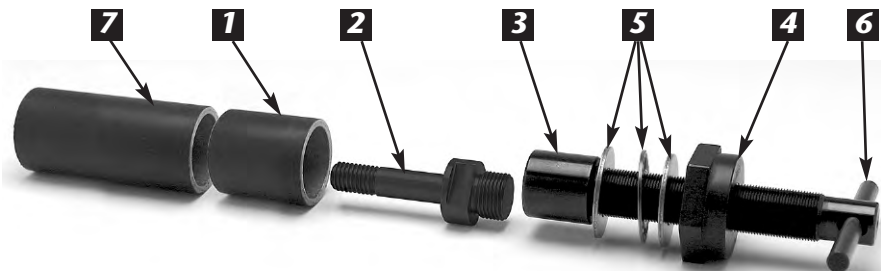


FIGURE 1

**CAUTION: WEAR SAFETY GLASSES. EXCESSIVE FORCE MAY DAMAGE PARTS!
SEE JIMS® CATALOG FOR HUNDREDS OF TOP QUALITY PROFESSIONAL TOOLS.
THE LAST TOOLS YOU WILL EVER NEED TO BUY.**

Performance Parts For Harley-Davidson Motorcycles