



- Thank you for purchasing the **Titan-X heated grips** - for electronic throttle.
Before installing, please read the instructions carefully and keep them for future reference.

⚠ Attention!

- The Titan-X heated grips are made to work with DC 12 V only.
- For installation, follow the steps described in the instructions. Any damage caused by wrong installation shall be imputed to the user.
- Do not break or modify the wires. To avoid a short circuit, don't pull on any wires when installing.
- The interior examination or maintenance should be executed by our professionals only.

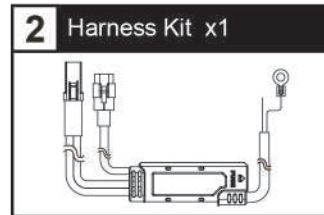
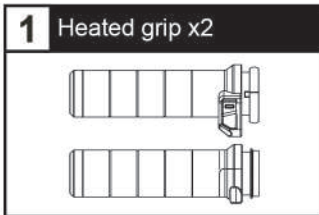
⚠ Some procedures must be followed to avoid damages caused by wrong installation.

⚠ **WARNING!** Some procedures must be followed to avoid damages to yourself or the public.

⚠ **CAUTION!** Some procedures must be followed to avoid damages to the vehicle.

📖 **READ CAREFULLY!** If any information dealt with in the instructions remains unclear, seek professional assistance.

1 Accessories

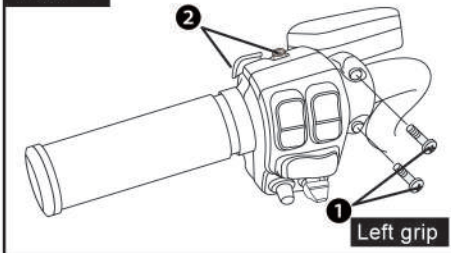


NOTE Contact your local distributor, if the items received in the box are not the same as the items listed above.

2-1 Practical installation instructions

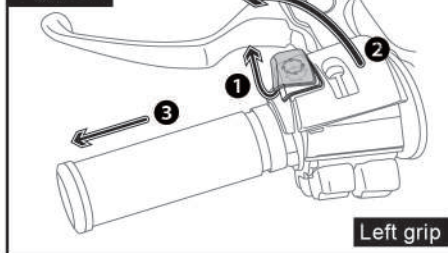
Heated grips installation procedure

Figure 1



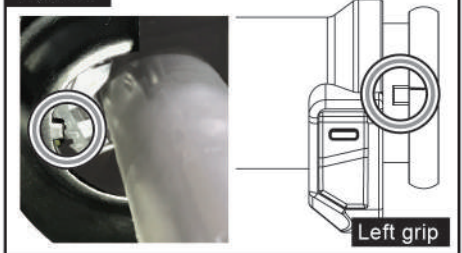
1. Use proper instrument to remove **1** the original screws x2 and loosen **2** the original screws x2.

Figure 2



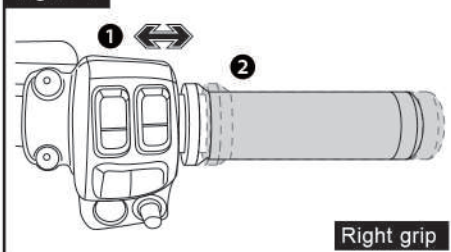
2. Pull **1** the function button, loosen **2** the switch assembly, and remove **3** the original grip.

Figure 3



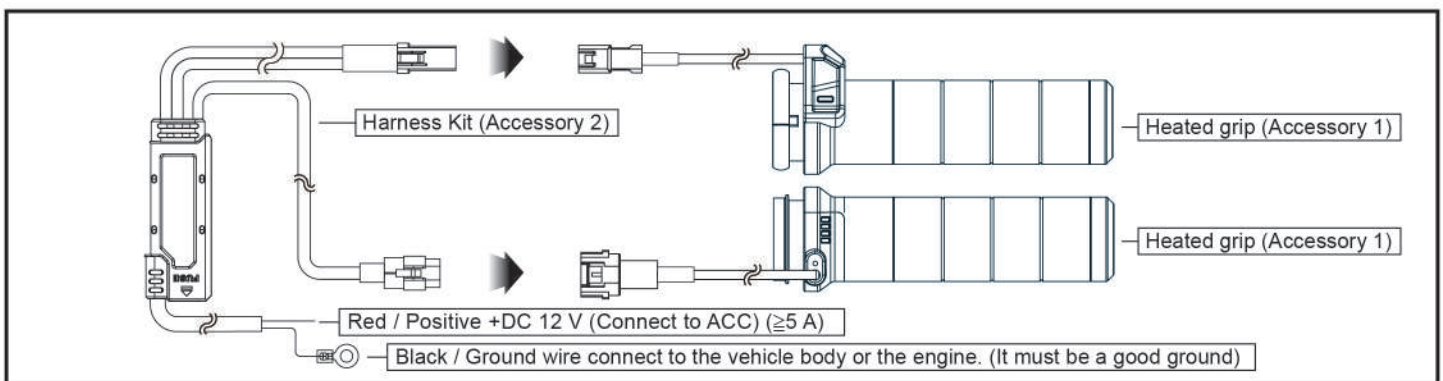
3. Make sure the grip fits the lock during installation.

Figure 4



4. Adjust the location of **1** the power assembly to control the tightness of the **2** grip.

2-2 Practical installation instructions



3 Heating Function Instruction

- Key-On: White Color Light Up Once
- Short Press: Enter Level 1

NOTE When no button pressed then it's in the turn-off mode which means no heating and no light up.

- Level 1: Heating Output - 20%
Color of Light - Blue
- Short Press: Enter Level 2

- Level 2: Heating Output - 40%
Color of Light - Green
- Short Press: Enter Level 3

- Level 3: Heating Output - 60%
Color of Light - Yellow
- Short Press: Enter Level 4

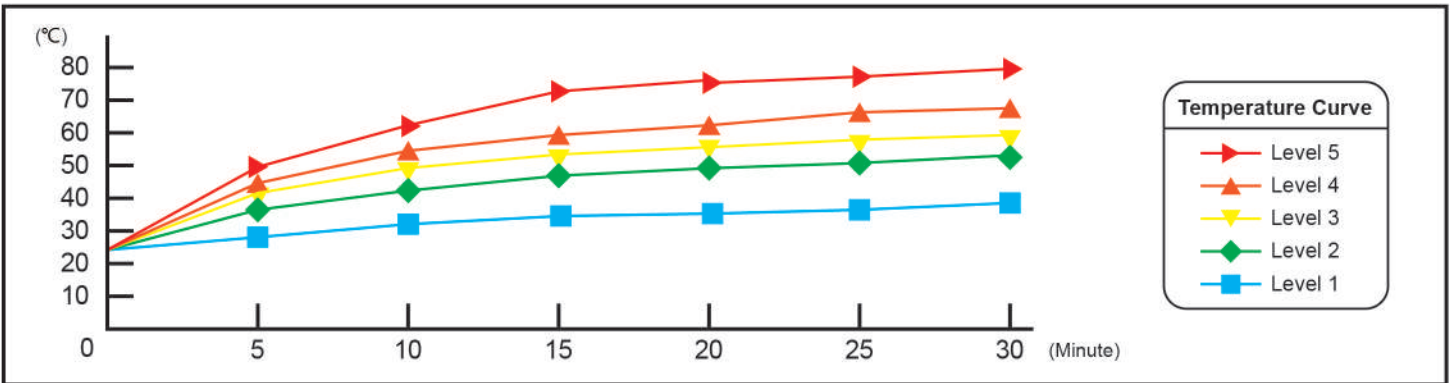
- Level 4: Heating Output - 80%
Color of Light - Orange
- Short Press: Enter Level 5

- Level 5: Heating Output - 100%
Color of Light - Red
- Short Press: Turn-Off

NOTE Press and hold the button for 3 seconds to turn off the heated grips at any level.

NOTE The Heated Grips use the memorizing function which means no matter if the grips were shut down at any level for more than 3 seconds and reset, it will restore to the previous level.

4 Heated Grip Testing Data



NOTE The testing environment is under 25 Degrees Celsius, with working voltage of 13.5V.

5 Low Battery Warning Instruction

- Low Battery Warning Activate Condition : When voltage lower than 11.5 V for more than 5 seconds.
- Heating Output : Turn-Off
- Indicator : Purple Light Flashing
- Short Press During Warning : Temporary deactivate the warning.
- Short Press During Turn-Off : Purple light flashing 3 times and turn-off.

NOTE Condition to Restore Normal Status : Detected voltage higher than 13 V and more than 5 seconds.

6 Caution

- Do not push the rubber section too hard as it might cause the device to break.
- Do not bend the in-line control unit on the harness kit, it might cause the unit to break.

7 Troubleshooting

The following situation does not indicate malfunction of the heated grips. Check the following before taking it in for repair.

Trouble-1	Check item
No LED indicator lighting up.	<ul style="list-style-type: none"> ●Could be the improper connection between the connectors. → Check each connector about the connection. ●Could be the fuse that is burnt. → Replace the 4A fuse by Terminal Car Fuse.

※If the problem couldn't be solved after above checking, contact the local dealer or KOSO directly.