



● Thank you for purchasing our product. Before installing/operating the product, please read the instructions thoroughly and retain them for future reference.

⚠ Attention!

1. For installation, please follow the steps described. Any damage caused by wrong installation shall be imputed to the users.
2. Do not disassemble or change any parts.
3. Opening the instrument will void any warranty. Maintenance or repair should be executed by our professionals only.

◎ **SYMBOL DESCRIPTION:**

NOTE The symbols indicate additional instructions.

⚠ Some procedures must be followed to avoid damages to the instrument.

WARNING! Certain procedure must be followed to avoid damages to yourself, to the vehicle or the public.



FLASH



LIGHT ON

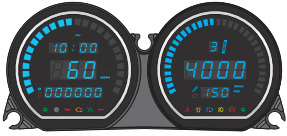


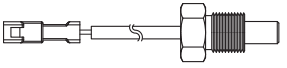



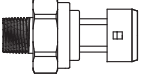


PRESS THE
BUTTON
ONCE



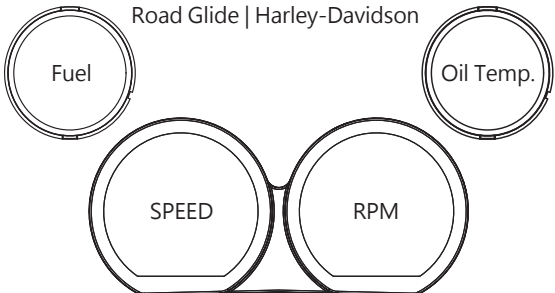
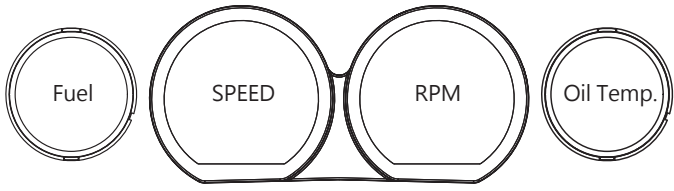
PRESS THE
BUTTON 3
SECONDS

1 Accessories


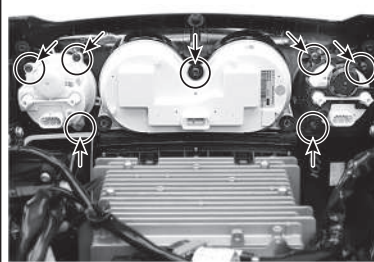
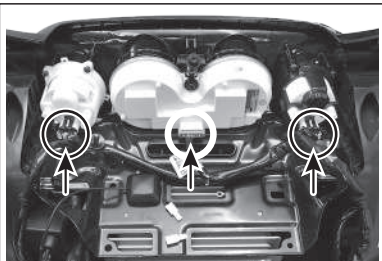

<p>1 Speedo & Tacho Meter X1</p> 	<p>2 Fuel Level Meter X1</p> 	<p>3 Oil Temp. Meter X1</p> 	<p>4 PT1/2-20UFN sensor X1</p> 
<p>5 Extension cord X1</p> 	<p>6 Extension cord X1</p> 	<p>7 Pressure Sensor Cord X1</p> 	<p>8 Electronic Pressure Sensor Cord X1</p> 

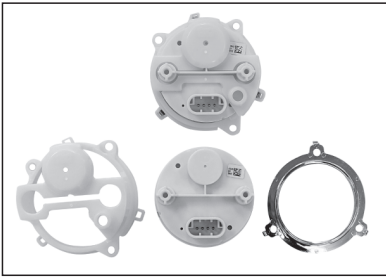
Contact your local distributor, if the items received in the box are not the same as the items listed above.

2-1 Gauge location

<p>Road Glide Harley-Davidson</p> 	<p>Street Glide Harley-Davidson</p> 
<p>NOTE Fit Harley-Davidson® FLHX, FLTC and FLTR from 2014 to 2017.</p>	

2-2 Disassembling Instructions

	<p>1. Disconnect the ground (-) (negative pole of the battery) from the vehicle's battery. 2. Remove the mounting screw and remove the fairing.</p>		<p>4. Remove the remaining 7 screws.</p>
	<p>3. Disconnect the 3 gauges.</p>		<p>5. Ensure the Speed and Tach bezels remain in the fairing.</p>



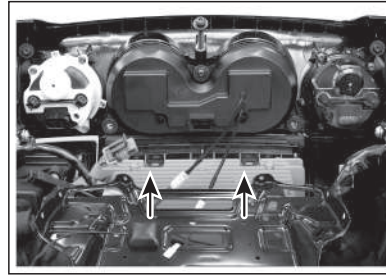
6. The fuel and volt bezels and mounting cups will be reused. There are 3 tabs on the bezels that need to be carefully pushed back through the mounting cup to separate the bezel from the mounting cup and to release the factory gauge.



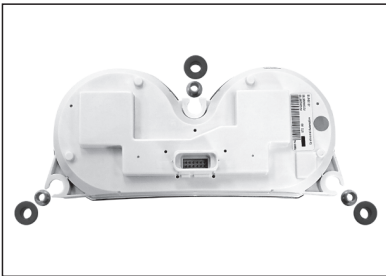
9. Re-use the bushings and nuts to install the KOSO speed/tachometer



7. The new OIL TEMP gauge will use the existing white Volt meter mounting cup and the new Fuel Level gauge will use the existing black Fuel mounting cup. Place the new FUEL and OIL TEMP gauge in the appropriate housings and secure the bezel in place by lining up the tabs.

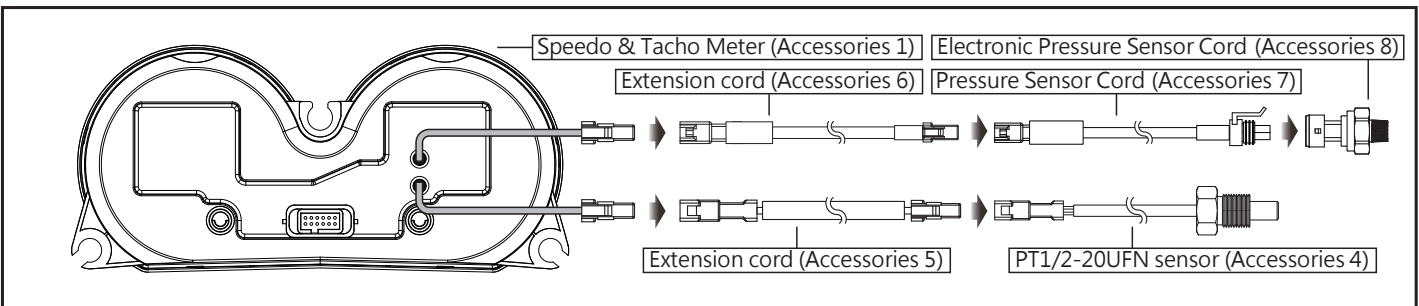


10. Reassemble the amplifier tray to the radio and speaker enclosures using the factory hardware; also give the top center Speed / Tach screw a final torquing with the gauge aligned to the fairing and amplifier tray.



8. Remove the bushings and nuts from the original speed/tachometer

2-3 Wiring Installation Instructions



3-1 Overview

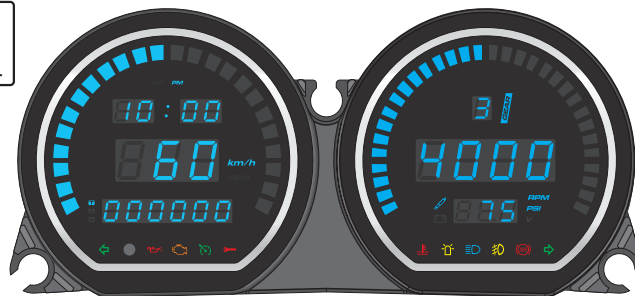
Speedometer
 ● Display range : 0 ~ 299 km/h (0 ~ 199 MPH) ● Display unit : 1 km/h (MPH)

Tachometer
 ● Display range : 0 ~ 9,990 RPM ● Display unit : 10 RPM

Time
 ● Display range : 12 / 24 hour format
 Time is not displayed when using radio.

Gear meter
 ● Display range : N, R, P, 1 ~ 6

Odometer
 ● Display range : 0 ~ 999,999 km (mile) return to zero upon exceed.
 ● Display unit : 1 km (mile)
Distance meter A,B
 ● Display range : 0 ~ 9,999.9 km (mile) return to zero upon exceed.
 ● Display unit : 0.1 km (mile)



Engine temperature
 ● Display range : -40 ~ 300 °C (-40 ~ 572 °F)
Voltmeter
 ● Display range : 8 ~ 18 V

Millage maintenance user settings (closable)
 ● Display range : user adjustable (500 ~ 16,000km / 300 ~ 10,000 mile) ~ -999 mile, automatically decreases according to the increase of total millage.
 ● Display unit : 1 km (mile)

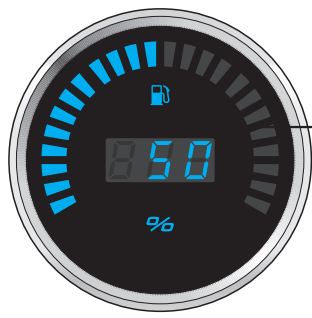
RANGE / Remaining Mileage Warning
 ● Display range : LCD shows "LO RNG" and flashing as warning when RNAGE / Remaining Mileage lower than 16 km (10 miles).

Average fuel consumption
 ● Display unit : L/100km, km/L,MPG (USspec.), MPG (UK-spec.)

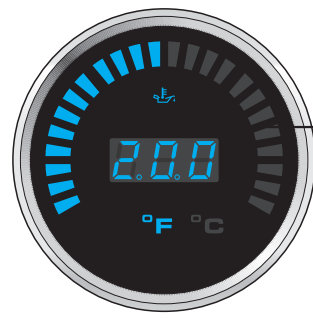
Indicators
 ● Turn signal (Green)
 ● Photometric Sensing
 ● Oil (Red)
 ● Engine warning (Yellow)
 ● Constant speed (Orange / Green)
 ● Security (Red)

Air PSI
 ● Display range : 0 ~ 150 PSI
 ● Display unit : 1 PSI

Indicators
 ● Water temperature (Blue)
 ● Warning Light (Orange/Green)
 ● High beam (Blue)
 ● Fog Light (Green)
 ● ABS (Yellow)
 ● Turn signal (Green)



Fuel Meter
 ● Display range : 0 ~ 100 %
 ● Display unit : 1 %



Oil Temp. Meter
 ● Display range : 0 ~ 400 °F (32 ~ 248 °C)
 ● Display range : 1 °F (1 °C)
Oil Temp. Warning
 ● Setting range : 140 ~ 400 °F (60 ~ 250 °C)
 ● Setting unit : 1 °F (1 °C)

3-2 Settings Instructions

● Speedometer	Display range : 0 ~ 299 km/h (0~199 MPH) switchable Display unit : 1 km/h (MPH)
○ Display interval	<0.5 second
○ Overspeed warning setting	Setting range : 30 ~ 299 km/h (19 ~ 199 MPH) when above(including) setting value, warning light will lit. Setting unit : 1 km/h (MPH)
○ Max. speed record	Display range : 0 ~ 299 km (0 ~ 199mile)
○ Internal and external odometer	Display range : 0 ~ 999,999 km(mile) Display unit : 1 km(mile)
○ Tire circumference	Setting range : 50 ~ 210 % Setting unit : 1 %
○ Trip meter A、B	Display range : 0 ~ 9,999.9 km (mile) Display unit : 0.1 km (mile)
○ Mileage maintenance	Setting range : off、500 ~ 16,000 km (300 ~ 10,000 mile)~ -999 km (mile), decrease according to the increase in total mileage. Setting unit : 1 km (mile)
● Gear meter	Display range : off、N、P、R、1、2、3、4、5、6
● Tachometer	Display range : 0 ~ 9,990 RPM Display unit : 10 RPM
○ RPM shift light	Display range : 2,000 ~ 8,000 RPM Warning lights on when exceed setting value (including). Setting unit : 100 RPM
○ Max. rotating speed	Display range : 0 ~ 8,000 RPM Display unit : 100 RPM
● Engine temperature	Setting range : -40 ~ 300 °C (-40 ~ 572 °F)
● Fuel meter	Setting range : HD Std / Cust
○ Fuel warning setting	Setting range : 1. HD Standard - LCD flashing as warning when Fuel level resistance greater than 211Ω, and will turn off when resistance smaller than 187Ω. 2. Customize - LCD flashing as warning when Fuel level lower than 20%, and will turn off when fuel level higher than 30%.

○ Fuel tank volume	Setting range : OFF / 1.0 ~ 9.9 US gallons
○ Average fuel consumption	Setting range : OFF、L/100km、km/L、MPG (US spec.)、MPG(UK spec.)
● RANGE / Remaining Mileage	Display range : 0 ~ 9,999 km (6,249 miles) Display unit : 1 km (mile)
○ RANGE / Remaining Mileage Warning	Display range : LCD shows "LO RNG" and flashing as warning when RANGE / Remaining Mileage lower than 16 km (10 miles).
● Clock	Setting range : 12 / 24 hour format
● Oil Temp.	Display range : 0 ~ 400 °F (32 ~ 248 °C) Display unit : 1 °C (°F)
○ Max. Oil Temp. record	Display range : 0 ~ 400 °F (32 ~ 248 °C)
● Air Pressure Gauge	Display range : Display --- when no sensor is installed, 0 ~ 150 PSI Display unit : 1 PSI
● Air Pressure Gauge Calibration	Calibration range : 0 ~ 25 PSI±1PSI Calibration unit : 1 PSI Default value : 0 PSI
● Backlight brightness	Setting range : 1 / 5 (darkest) ~ 5 / 5 (brightest)
● Operating voltage	DC 12 V
● Temperature range	-10 ~ +60 °C
● Specifications	JIS D 0203 (S2)
● Meter Weight - Speedo & Tacho	286 grams
● Meter Weight - Oil Temp.	81 grams
● Meter Weight - Fuel Level	81 grams
● Indicators	Turn signal (Green) ↕ Photometric Sensing ● Oil (Red) ↕ Engine warning (Yellow) ↕ Constant speed (Orange / Green) ↕ Security (Red) ↕ Water temperature (Blue) ↕ Warning Light (Orange/Green) ↕ High beam (Blue) ↕ Fog Light (Green) ↕ ABS (Yellow) ↕ Turn signal (Green) ↕

NOTE Design and specification may change without further notice.

3-3 Entering the settings

* To enter the gauge settings mode, you must follow the steps below:

- 1 : The key must be switched to **ON/Accessories**
- 2 : **Engine OFF/run** switch must be **OFF**.
- 3 : Meter must be displaying **ODOMETER**.
- 4 : Hold both **turn signal** switches for 3 seconds.
- 5 : Use **trigger** switch to navigate through settings.

Trigger switch
Located in front of the left handle

Engine OFF/run

Left turn signal

Right turn signal

- In the total mileage screen, press the button once to switch to Trip A screen.
- Hold the **button for 3 seconds** to shift between air pressure and voltage.

NOTE Engine temperature and voltage will be displayed on the tachometer.

- Trip A screen, press the button once to switch to Trip B screen.
- Hold the **button for 3 seconds** to clear the Trip A recordings.



- Trip B screen, press the button once to switch to the mileage maintenance screen.
- Hold the **button** for 3 seconds to clear the Trip B recordings.



- In the millage maintenance screen, press the **button** once to switch to the remaining millage screen.
- Millage maintenance will count down from setting value, when it reaches 0, the screen will blink to indicate millage reached.



- When the reminding feature is activated, it will automatic return to millage maintenance screen if the millage maintenance value is reached.
- When the reminding feature is activated, it will automatically switch to millage maintenance screen during startup if remaining millage value is reached.



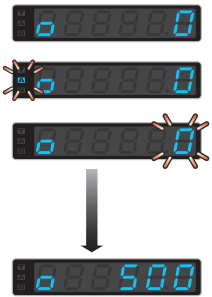
- Hold the **button** for 3 seconds to switch to inform function switch.



NOTE ⚠ It will not display if it's not supported in engine computer.

- Hold the **button** for 10 seconds to clear the millage maintenance recordings.

- At the 0 second, start holding the button.
- At the 3rd second, the inform feature will blink once.
- At the 5th second, the inform feature will switch back and mileage display will begin blinking.
- During the 6~9th seconds, if you release button, will cancel the process.



- On the 10th second, the millage maintenance record is cleared.

NOTE ⚠ Display can be switch off. Please reference video setting.



- In the remaining millage screen, press the **button** once to switch to the average fuel consumption screen.
- Remaining millage is lower than 16 km (10mile), will display "LO RNG" to inform users.
- When the reminding feature is activated, it will automatically return to the remaining millage screen, if remaining millage is too low.
- When the reminding feature is activated, it will automatically switch to the remaining millage screen during startup, if remaining millage is too low.



- Hold the **button** for 3 seconds to switch to inform feature switch



NOTE ⚠ It will not display if it's not supported in engine computer.

- The following situation will result displaying "r----" or no display at all.
- Abnormal fuel sensor (short / open circuit)

NOTE ⚠ Display can be switch off. Please reference video setting.



- In the average fuel consumption screen, press the **button** once to switch to the MAX. record screen.



- In the MAX. record screen, press the **button** once to switch to the total millage screen.
- Hold the **button** for 3 seconds to clear the MAX. record.

- Total millage screen.

