



Thank you for purchasing our product. Before installing/operating the product, read the instructions carefully and retain them for future reference.

⚠ Attention!

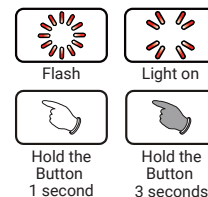
- For installation, follow the steps described. Any damage caused by wrong installation shall be imputed to the users.
- To avoid a short circuit from occurring do not pull or modify the wires during installation.
- Do not disassemble or change any parts. Opening and disassembling this unit will void any warranty.
- Maintenance and repairs should be executed by our professionals only.

Symbol description:

NOTE

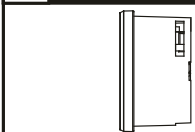
⚠ Some procedures must be followed to avoid damages to the product.

⚠ **WARNING!** Certain procedure must be followed to avoid damages to yourself, to the vehicle or to others.

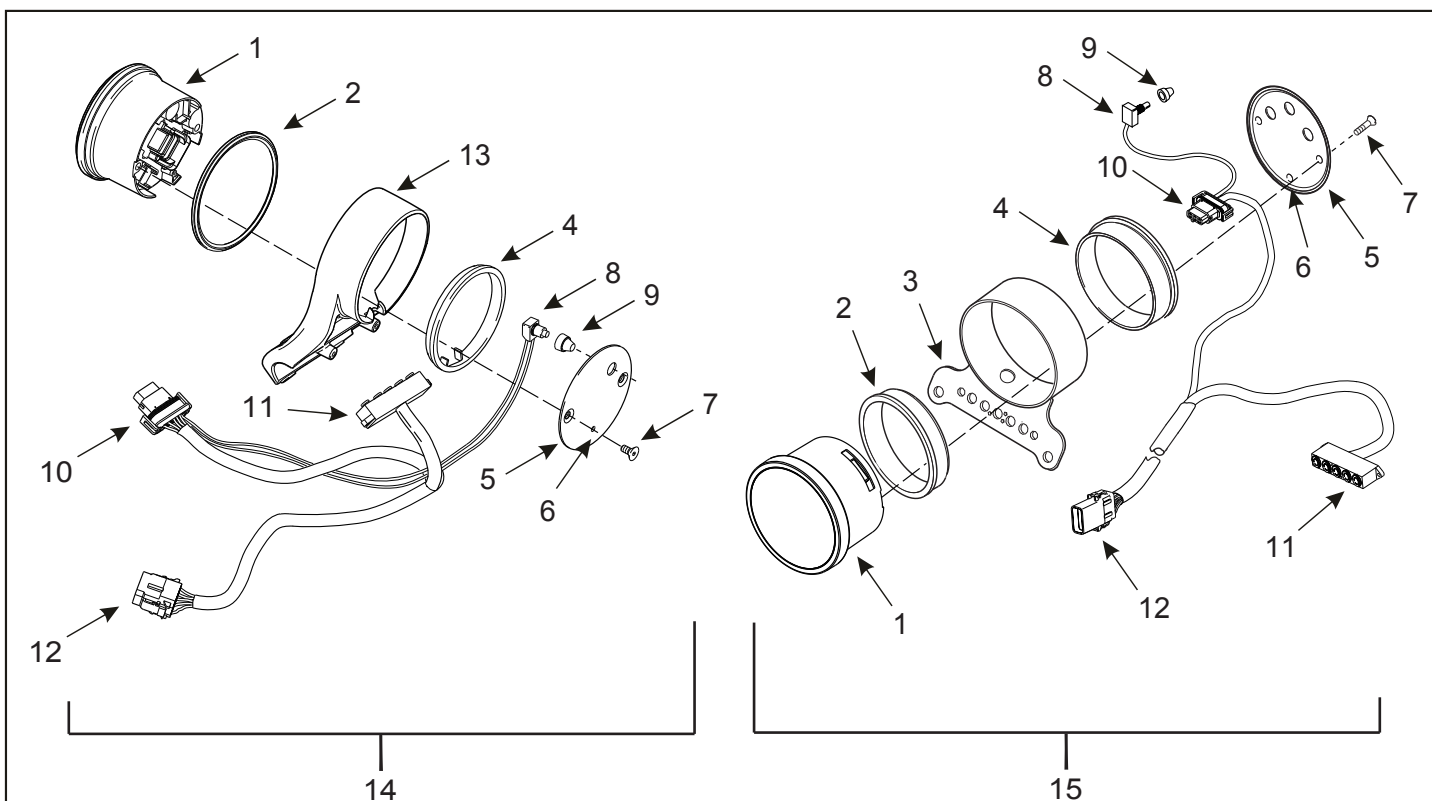


1 Accessories

1 LCD Meter X1



2 Installation Diagram



1. Speedometer
2. Front gasket
3. Instrument housing / bracket
4. Back gasket
5. Back plate
6. Vent hole
7. Screw (2)
8. Trip odometer reset switch

9. Reset switch boot
10. Speedometer harness connector [39B]
11. Indicator lamp module
12. Instrument harness connector [20A]
13. Speedometer housing / handlebar clamp
14. XL 1200L / XL 1200N
15. All other single gauge XL models except XL 883C / XL 1200C

NOTE Speedometer Components: XL Single Gauge Models Except XL 883C/XL 1200C

NOTE Installation may require instrument cluster gasket, OEM part #70900822.

⚠ **Warning!** Keep the stock upper and lower gaskets from the stock holder and install the gauge in between the gaskets.

NOTE For installation on "Dyna" or "Softail", follow the procedure according to your Harley-Davidson Service Manual.

3-1 Overview

Tachometer

- Display Range : 0 ~ 10,000 RPM

Indicator

- Check engine indicator (Amber)
- RPM shift indicator (Red)
- ABS indicator (Amber)
- security indicator (Red)
- Cruise control
- low voltage warning indicator



Fuel meter

- Display Range : 6 Levels

Gear meter

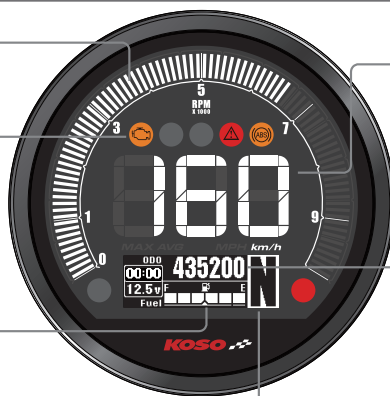
- Display range : off, highest gear, N and highest gear, show all (N / 1 ~ 6)

Odometer

- Display range : 0 ~ 999,999 km (mile)
- return to zero upon exceed
- Display unit : 1 km (mile)

Distance meter A,B

- Display range : 0 ~ 9,999.9 km (mile)
- returns to zero upon exceed
- Display unit : 0.1km (mile)



Speedometer

- Display range : 0 ~ 360 km (0 ~ 255 mile)
- Display unit : 1 km (mile)

Mileage maintenance user settings (closable)

- Display range : user adjustable (500 ~ 16,000km / 300 ~ 10,000 mile) ~ -999 mile, automatic decrease according to the increase of total mileage.
- Display unit : 1 km (mile)

Remaining mileage

- Display range : 0 ~ 9,999 km (mile), when mileage is lower than 16 km (10 mile) will display LO RNG

Average fuel consumption

- Display range : L/100km, km/L, MPG (US-spec.), MPG (UK-spec.)

Clock

- Display range : 00:00~23:59 (24H)/ 1:00~12:59 (12H)







Temperature

- Display range : -40 ~ 215°C (-40 ~ 419 °F)

Voltmeter

- Display range : 8~18V

3-2 Features and settings description

●Speedometer	Display range : 0 ~ 360 km (0 ~ 255 mile) switchable Display unit : 1 km (mile)	○Max. RPM record	Display Range : 0~10,000 RPM, can return to zero manually Display unit : 100 RPM
○Overspeed warning	Display range : 30~360 km/h (20~225 MPH) Display unit : 1km/h (1 MPH)	●Temperature	Display range : -40~225 °C (-40~419 °F) Display unit : 1 °C (°F)
○Max. speed record	Display range : 0 ~ 360 km/h (0 ~ 225 MPH), can return to zero manually Display unit : 1 km/h (MPH)	○Max. temperature record	Display range : -40~225 °C (-40~419 °F) , can return to zero manually Display unit : 1 °C (°F)
○Internal and external odometer	Display range : 0 ~ 999,999 km (mile) Display unit : 1 km (mile)	●Fuel meter	Display range : 6 levels Display unit : 1 level(16.6 %) Setting range : OFF, SPO-SW, SPO-F-KIT, Dyna-04, Dyna-09, Softail, Tour-04, Tour-08, Custom
○Trip meter A,B	Display range : 0 ~ 9,999.9 km (mile) can return to zero manually Display unit : 0.1 km (mile)	○Fuel tank volume	Setting range : OFF/ 1.0 ~ 9.9 US gallons
●Motor oil maintenance (Trip O)	Display range : OFF, -999~16,000 km (-999~10,000 mile), can be reset manually Display unit : 1 km (mile)	○Average fuel consumption	Setting range : OFF, L/100km, km/L MPG (US spec.), MPG (UK spec)
○Motor oil maintenance warning	Setting range : OFF, 500 ~ 16,000 km(300~10,000 mile) When lower than 0 km (mile), the value shows on the screen and flickers for warning and the warning signal will be lit according to the setting. Setting unit : 100 km(mile)	●Clock	Setting range : 00:00~23:59 (24H) 1:00~12:59 (12H)
●Fuel reserve tripmeter (Range)	Display range : 0 ~ 9999.9km(mile) Display unit : 0.1km(mile)	●Voltmeter	Display range : DC 8.0~18.0 V Display unit : DC 0.1 V
○Fuel reserve tripmeter warning	Display range : the value is lower than 16 km (10mile), will display " LO RNG " .	●Backlight brightness	Setting range : 1 / 5 (darkest) ~ 5 / 5 (brightest) Setting unit : 1 / 5
○Tire circumference	Setting range : 50 ~ 210 % Setting unit : 1 %	●Operating voltage	DC 12 V
●Gear meter	Display range : OFF, highest gear, N and highest gear, show all (N / 1 ~ 6)	●Temperature range	-10 ~ +60 °C
○Max. Gear record	Display range : - , N, 1~the highest gear, can return to zero manually	●Specifications	JIS D 0203 (S2)
●Tachometer	Display Range : 0~10,000 RPM Display unit : 100 RPM	●Meter Size	D96.0 X 57.7 mm
○Shift light warning	Setting range : 2,000 ~ 10,000 RPM Warning lights on when exceed setting value (including). Setting unit : 100 RPM	●Meter Weight	190 grams
		●Indication light	Check engine indicator (Amber)  RPM shift indicator (Red)  ABS indicator (Amber)  security indicator (Red)  Cruise control  low voltage warning indicator 

NOTE Design and specification may change without further notice.

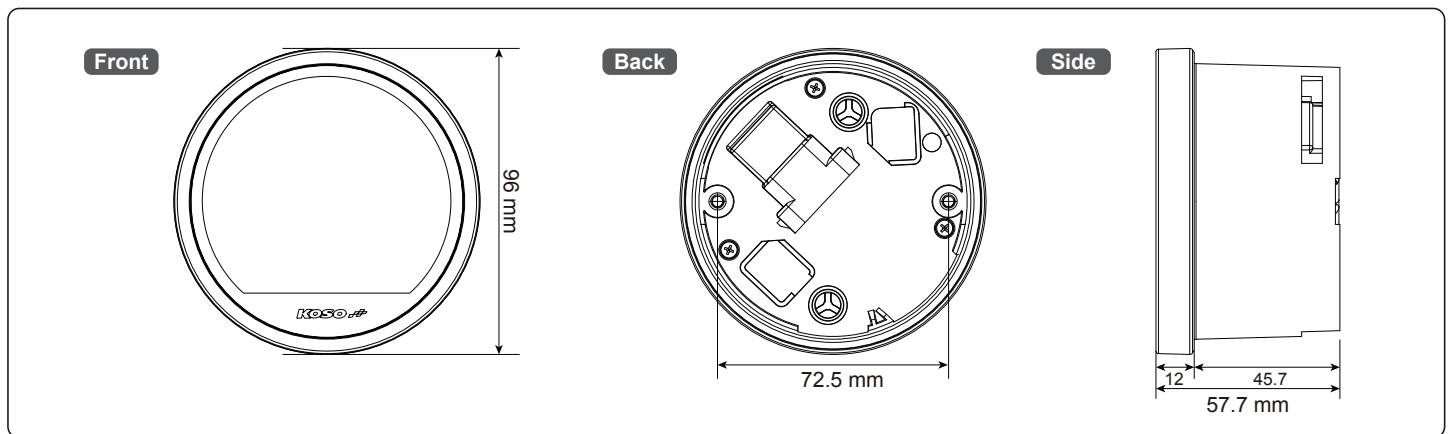
3-3 Application List

Vehicle type	Feature			
	Gear	Low fuel level warning	Fuel Level	Remaining mileage
Sportster				
2004 ~ 2006	-	-	-	-
2007	-	YES (2)	YES (1) (3)	YES (1) (3) (5)
2008 ~ 2013	YES (1)	YES	YES (1) (3)	YES (1) (3) (5)
Dyna				
2004 ~ 2007	-	YES	YES (1) (4)	-
2008	YES (1)	YES	YES (1) (4)	-
2009 ~ 2011	YES (1)	YES	YES (1) (4)	YES (5)
Softail				
2008 ~ 2010	YES (1)	YES	YES (1) (4)	YES (5)
Note: 1.New feature 2.Fuel Sender Resistor kit needs to be new version(PN 72545-08) 3.Need to install fuel sensor kit(PN 61200008A) 4.[Fuel Type] Set as CUS (user define) and follow the procedure to learn the fuel position for 0% (E), 33%, 66%, and 100% (F). 5.Set the vehicle fuel tank volume in the [fuel volume settings].				

3-4 Fuel feature notes

- To enable fuel level and fuel range functionality, Sportster models require separate purchase of Fuel Sensor kit (PN 61200008A). If fuel sensor kit is not installed, 2007 Sportster models require separate purchase of Fuel Sender Resistor kit (PN 72545-08.)
- The Sportster Fuel Sensor kit (PN 61200008A) is not compatible wit Sportster Fuel Gauge kits (PN 75031-09 PN 75338-9). The motorcycle cannot support multiple electrical fuel gauges. If Fuel Gauge kit (PN 75031-09 or PN 75338-09) is equipped, it must be disabled or the Fuel Sensor kit (PN 61200008A) cannot be installed and the fuel function of this meter kit will not function.

3-5 Meter Size



3-6 Main menu functions



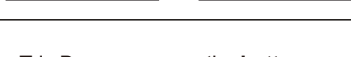
- In the ODO screen, press the **button once** to switch to Trip A screen.

- In the ODO screen, hold the **button for 3 seconds** to enter into the setting screen. (refer to setting 4)



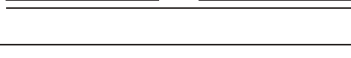
- Trip A screen, press the **button once** to switch to Trip B screen.

- Press the **button for 3 seconds** to clear the Trip A recordings.



- Trip B screen, press the **button once** to switch to the mileage maintenance screen.

- Press the **button for 3 seconds** to clear the Trip B recordings.



- In the mileage maintenance screen, press the **button once** to switch to the remaining mileage screen.

- Mileage maintenance will count down from the set value. When it reaches 0, the screen will blink to indicate mileage reached.



- When reminding feature is activated, it will automatically return to the mileage maintenance screen when the value is reached.



- Press the **button for 3 seconds** to switch to inform function.



- Press the **button for 10 seconds** to clear the mileage maintenance recordings.



- In the 0 second, start holding the button.



- In the 3rd second, the inform feature will blink once.

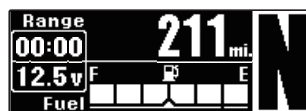


- In the 5th second, inform feature will switch back, mileage display will begin blinking.

- During the 6~9th seconds, if the button is released, it will cancel the process.

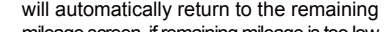


- On the 10th second, the mileage maintenance record is cleared.



- In the remaining mileage screen, press the **button once** to switch to the average fuel consumption screen.

- Remaining mileage is lower than 16 km (10mile), will display "LO RNG" to inform users.

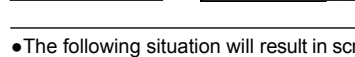


- When reminding feature is activated, it will automatically return to the remaining mileage screen, if remaining mileage is too low.

- When the reminding feature is activated, it will automatically switch to the remaining mileage screen during startup, if the remaining mileage is too low.



- Press the **button for 3 seconds** to switch to inform feature switch.



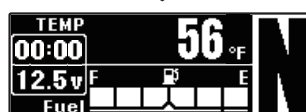
- The following situation will result in screen displaying "r----" or no display at all.

- Abnormal fuel sensor(short / open circuit)
- Engine computer does not support this feature

- Fuel related settings will affect this value's precision

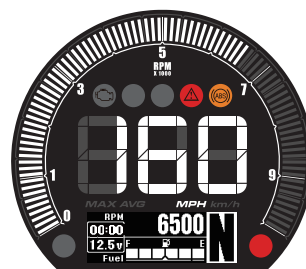


- In the average fuel consumption screen, press the **button once** to switch to the engine temperature screen.



- In the engine temperature screen, press the **button once** to switch to the RPM screen.

NOTE Display can be switched off (refer to setting 4-9)

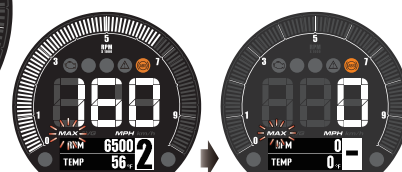


- In the RPM screen, press the **button once** to switch to the Max. record screen.



- In the Max. record screen, press the **button once** to switch to return to the ODO screen.

- Press the **button for 3 seconds** to clear the Max. record screen.



4 Setting Screen Switching Description

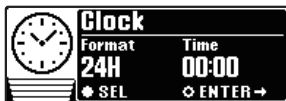
- Press the **button for 3 seconds** on the main screen to switch to the setting screen.
- Press the **button** to select
- ① Clock ② Unit(Speed/Temperature) ③ Display(Bright) ④ The tire circumference ⑤ Gear ⑥ Overspeed warning ⑦ Shift light warning ⑧ Fuel ⑨ Engine TEMP ⑩ Mileage maintenance ⑪ Total internal and external mileage ⑫ Exit

NOTE During setting, if the button is not pressed in 30 seconds, it will automatically return to the startup screen.

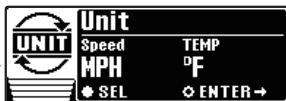
● Main screen(ODO)



① Clock



② Unit(Speed/Temperature)



③ Display(Bright)



④ The tire circumference



⑧ Fuel



⑦ Shift light warning



⑥ Overspeed warning



⑤ Gear



⑨ Engine TEMP



⑩ Mileage maintenance



⑪ Total internal and external mileage



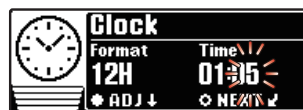
⑫ Exit



4-1 Clock settings



- In the clock screen, press the **button for 3 seconds** to enter the clock setting.



- EX : Set clock setting from 12:00 to 1:05.
- Press the **button for 3 seconds** to return to the clock screen.



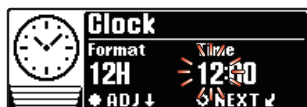
- Example : If you want to set the clock to 12 hour format.
- Press the **button once** to select desired setting value.

⚠ Now the setting value will blink.

NOTE Setting range : 12h / 24h



- EX : Set clock from 24 hour format to 12 hour format.
- Press the **button for 3 seconds** to enter time into the (hour / minute) setting screen.



- Example : Set clock to 01:05 AM.
- Press the **button for 3 seconds** to move the cursor to the desired setting level.



⚠ Now the setting value will blink.

- Press the **button once** to select desired setting value.

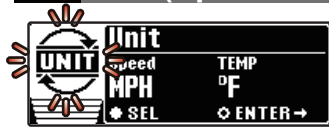


NOTE Setting range :
Hour : 1~12 (12 h) / 0~23 (24 h)
Minute : 00~59 minutes.



- The clock screen.

4-2 Unit (Speed & Temp.) settings



- In the unit screen, press the **button** for **3 seconds** to enter the speed unit setting.



- **Example** : To set the temperature unit to °C.
- Press the **button** **once** to select the desired value.

⚠ Now the setting value will blink.

NOTE Setting range : °C(Celsius) and °F(Fahrenheit).



- **Example** : To set speed unit to km/h.
- Press the **button** **once** to select the desired value.

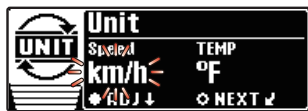
⚠ Now the setting value will blink.

NOTE Setting range : km/h, MPH.

NOTE Total mileage and distance meter unit will vary according to the speed unit.



- **EX** : Set temperature unit from °F(Fahrenheit) to °C(Celsius).
- Press the **button** for **3 seconds** to return to the unit screen.



- **EX** : Set speed unit from MPH to km/h.
- Press the **button** for **3 seconds** to enter into the temp. unit setting.

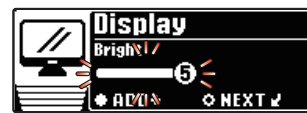


- The unit screen.

4-3 Display (brightness) settings



- In the display screen, press the **button** for **3 seconds** to enter the brightness setting.



- **EX** : The brightness setting is changed from 3/5 (60%) to 5/5 (100%).
- Press the **button** for **3 seconds** to return to the display screen.



- **Example** : To set the brightness to 5/5 (100%).
- Press the **button** **once** to select the desired value.

⚠ Now the setting value will blink.

NOTE Setting range : 1/5~ 5/5 (Brightest), 5 different levels available. Setting unit : 20% per level.



- The display screen.

4-4 The tire circumference settings



- In the tire circumference screen, press the **button** for **3 seconds** to enter into the tire circumference setting.



- **Example** : Set tire percentage from 100% to 105%.
- Press the **button** for **3 seconds** to return to the tire circumference screen.



- **Example** : To set the tire circumference to 105%.
- Press the **button** for **3 seconds** to move the cursor to the desired setting level.



⚠ Now the setting value will blink.

- Press the **button** **once** to select the desired value.



NOTE Setting range : 50 ~ 210%.



- The tire circumference screen.

4-5 Gear settings



- In the gear screen, press the **button** for 3 seconds to enter the gear setting.



- EX : Set gear from ON to OFF.
- Press the **button** for 3 seconds to return to the gear screen.



- Example : To set gear to OFF.
- Press the **button** once to select the desired value.

⚠ Now the setting value will blink.

NOTE Setting range : ON, OFF.



- The gear screen.

4-6 Overspeed warning settings



- In the overspeed warning screen, press the **button** for 3 seconds to enter the overspeed warning setting.



- EX : Set overspeed warning value from 150 MPH to 200 MPH.
- Press the **button** for 3 seconds to return to the overspeed warning screen.



- Example : To set overspeed warning value to 200 MPH.
- Press the **button** for 3 seconds to move to the digit you want to set.

⚠ Now the setting value will blink.

NOTE Setting range : 30~360 km/h (20~225 MPH).



- The overspeed warning screen.



- Press the **button** to choose the setting number.

4-7 Shift light warning settings



- In the shift light warning screen, press the **button** for 3 seconds to enter the shift light warning setting.



- EX : Set warning light from Steady to Flash.
- Press the **button** for 3 seconds to return the shift light warning screen.



- Example : To set shift light warning value to 5,700 RPM.
- Press the **button** for 3 seconds to move to the digit you want to set.

⚠ Now the setting value will blink.

NOTE Setting range : 2,000 ~ 10,000 RPM.



- The shift light warning screen.



- Press the **button** to choose the setting number.



- EX : Set shift light warning value from 5,500 RPM to 5,700 RPM.
- Press the **button** for 3 seconds to enter the warning light screen.



- Example : To set warning light to Flash.
- Press the **button** once to select the desired value.

⚠ Now the setting value will blink.

NOTE Setting range : Steady, Flash.

4-8 Fuel settings



- In the fuel screen, press the **button** for **3 seconds** to enter the fuel setting.

4-8-1



- In the fuel type screen, press the **button** for **3 seconds** to enter the fuel type setting.



- **Example : To set the fuel type to Custom.**
- Press the **button** **once** to select desired setting value.

⚠ Now the setting value will blink.

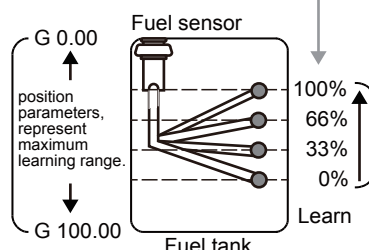
NOTE Settings range:
 1.OFF [Fuel display. off]
 2.SPO-SW [Sporster fuel volume switch]
 3.SPO-F-KIT
 4.Dyna-04
 5.Dyna-09
 6.Softail
 7.Tour-04
 8.Tour-08
 9.Custom [User define]



- **EX :** To set fuel type from OFF to Custom.
- Press the **button** for **3 seconds** to enter the user define mode setting.



- **User define mode**
Needs to learn the position of 0% (E), 33%, 66%, 100% (F) fuel volume.



- Fuel volume 0% position learning screen.
- confirm that there it is low fuel before learning.
- Allow the vehicle to be still for 10 ~ 15 seconds in order to steady the liquid surface.
- Press the **button** **once** to learn the current fuel position.
- Press the **button** for **3 seconds** to enter into the next fuel volume position learning screen.



- Fuel volume 33% position learning screen.
- confirm that there is 1/3 fuel volume in fuel tank before learning.
- Allow the vehicle to be still for 10 ~ 15 seconds in order to steady the liquid surface.
- Press the **button** **once** to learn current fuel position.
- Press the **button** for **3 seconds** to enter into the next fuel volume position learning screen.



- Fuel volume 66% position learning screen.
- confirm that there is 2/3 fuel volume in fuel tank before learning.
- Allow the vehicle to be still for 10 ~ 15 seconds in order to steady the liquid surface.
- Press the **button** **once** to learn current fuel position.
- Press the **button** for **3 seconds** to enter into the next fuel volume position learning screen.



- Fuel volume 100% position learning screen.
- confirm that there is 3/3 fuel volume in fuel tank before learning.
- Allow the vehicle to be still for 10 ~ 15 seconds in order to steady the liquid surface.
- Press the **button** **once** to learn current fuel position.
- Press the **button** for **3 seconds** to enter into the learning conformation screen.



- Learning conformation screen.
- Press the **button** once to save the current learning results, then automatically return to the fuel type setting screen.

Save? Done!

- If an error occurs in the learning process, it will display "Error!" when saving. Then abandon this learning and return to fuel type screen.

Save? Error!

- Press the **button** for **3 seconds** to renounce current learning result and return to the sub settings screen.

Save? Abort!



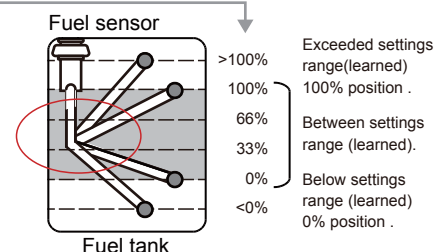
- In the Fuel type screen.
- Press the **button** **once** to enter the next setting.

NOTE Setting range :
 • When set to OFF, will return to fuel type settings screen.
 • When set to other settings, will enter next setting option.

4-8-2



- Fuel position indicator.
- This screen will display the current liquid surface position, if it exceeds the range it is recommended to reset the fuel volume parameters to acquire more precise fuel volume and range information.



- Press the **button** to enter the fuel capacity screen.

4-8-3



- In the fuel capacity screen, press the **button** for **3 seconds** to enter the fuel capacity setting.



- Example : To set fuel capacity function as ON.

- Press the **button once** to select desired setting value.

⚠ Now the setting value will blink.

NOTE Setting range : ON, OFF.



- EX : Set fuel capacity function to ON.

- Press the **button for 3 seconds** to enter the fuel capacity setting.



- Example : To set fuel volume to 4.7.

- Press the **button for 3 seconds** to move the cursor to desired setting level.



⚠ Now the setting value will blink.

- Press the **button once** to select desired setting value.



NOTE Setting range : 1.0 ~ 9.9 gallons.

NOTE Volume calculation method checks for the total volume of the fuel tank and low fuel indicating volume in the user manual of vehicle, then substitutes it into the equation below :
total vol. - (low fuel vol. / 2) = setting value.
Then enter the result into the setting value.



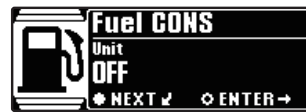
- EX : Set fuel volume value from 4.5 to 4.7.

- Press the **button for 3 seconds** to return to fuel capacity screen.



- Press the **button once** to enter the fuel consumption unit screen.

4-8-4



- In fuel consumption unit screen, press the **button for 3 seconds** to enter the fuel consumption unit setting.



- Example : To set fuel consumption unit as MPG (US).

- Press the **button once** to select the desired settings value.

⚠ Now the setting value will blink.

NOTE Settings range : OFF, L/100 km, km/L, MPG (US), MPG (UK).



- EX : To set fuel consumption unit from OFF to MPG (US).
- Press the **button for 3 seconds** to return to the fuel consumption unit screen.



- Press the **button once** to return to the fuel screen.



- The fuel screen.

4-9 Engine TEMP settings



- In the engine temp screen, press the **button for 3 seconds** to enter the engine temp setting.

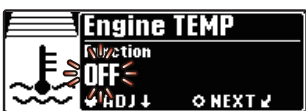


- Example : To set engine temp function to OFF.

- Press the **button once** to select the desired value.

⚠ Now the setting value will blink.

NOTE Setting range : ON, OFF.



- EX : Set engine temp function from ON to OFF.

- Press the **button for 3 seconds** to return to the engine temp screen.



- The engine temp screen.

4-10 Mileage maintenance settings



- In the mileage maintenance screen, press the **button for 3 seconds** to enter the mileage maintenance setting.



- EX : Set the mileage maintenance from 300 mile to 500 mile.
- Press the **button for 3 seconds** to return to the mileage maintenance screen.



- Example : To set mileage maintenance to (ON).
- Press the **button once** to select the desired settings value.

⚠ Now the setting value will blink.

NOTE Display range : ON, OFF.



- The mileage maintenance screen.



- EX : Set mileage maintenance to (ON).
- Press the **button for 3 seconds** to enter into the mileage maintenance main screen.

NOTE When set to OFF, it will directly return to mileage maintenance main screen.



- Example : To set mileage maintenance value to 500 mile.

- Press the **button for 3 seconds** to move the cursor to the desired settings level.



⚠ Now the setting value will blink.

- Press the **button once** to select desired setting value.



NOTE Setting range : 500 ~ 16,000 km (300 ~ 10,000 mile).

4-11 Total internal and external mileage settings



- In the total mileage screen, press the **button for 3 seconds** to enter the total external mileage setting.



- EX : Set the total external mileage from 0 to 50,000 km.
- Press the **button for 3 seconds** to return to the total mileage screen.



- Current total internal mileage display is 5 km.

⚠ User unable to adjust or remove total internal mileage.

NOTE Display range : 0 ~ 999,999 km (mile).

- Example : To set external total distance value to 50,000 km

- Press the **button for 3 seconds** to move the cursor to the desired settings level.

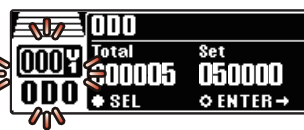


⚠ Now the setting value will blink.

- Press the **button once** to select desired setting value.



NOTE Setting range : 0 ~ 999,999 km (mile).



- The total mileage screen.

4-12 Exit



- In the exit screen, press the **button for 3 seconds** to return to the ODO screen.



- The ODO screen.

5 Troubleshooting

The following situations do not indicate malfunctions of the product. Check the following before taking it in for repair.

Trouble	Check item	Trouble	Check item
The meter doesn't work when the power is on.	<ul style="list-style-type: none"> • The power isn't supplied to the meter. → Make sure the wiring is connected. The wiring and fuse are not broken. → The battery is too old to supply needed power (DC 12 V). 	Speed appears incorrectly.	<ul style="list-style-type: none"> • May be wrong settings. → Check the settings menu to confirm whether the setting for speed is correct.
The meter shows wrong information.	<ul style="list-style-type: none"> • Check the voltage of your battery and make sure the voltage is over DC 12 V. 	The clock is incorrect.	<ul style="list-style-type: none"> • May be wrong setting. → Check the setting list to see whether the setting for clock is correct.

※ If the problems still cannot be solved, contact our technical department for assistance.

DL-04HD

Part#: BA077400

<u>2004</u>
Dyna Low Rider FXDL
Dyna Low Rider - EFI FXDLI
Dyna Super Glide FXD
Dyna Super Glide - EFI FXDI
Dyna Super Glide Sport FXDX
Dyna Super Glide Sport - EFI FXDXI
Sportster 1200 Custom XL1200C
Sportster 883 XL883
Sportster 883 Custom XL883C
<u>2005</u>
Dyna Low Rider FXDL
Dyna Low Rider - EFI FXDLI
Dyna Super Glide FXD
Dyna Super Glide - EFI FXDI
Dyna Super Glide Custom FXDC
Dyna Super Glide Custom - EFI FXDCI
Dyna Super Glide Sport FXDX
Dyna Super Glide Sport - EFI FXDXI
Sportster 1200 Custom XL1200C
Sportster 883 XL883
Sportster 883 Custom XL883C
Sportster 883 Low XL883L
Sportster 883R XL883R
<u>2006</u>
Dyna Low Rider - EFI FXDLI
Dyna Super Glide - EFI FXDI
Dyna Super Glide Custom - EFI FXDCI
Sportster 1200 Custom XL1200C
Sportster 1200 Low XL1200L
Sportster 883 XL883

Sportster 883 Custom XL883C
Sportster 883L XL883L
Sportster 883R XL883R
Street Bob - EFI FXDBI
<u>2007</u>
Dyna Low Rider FXDL
Dyna Super Glide FXD
Sportster 1200 Custom XL1200C
Sportster 1200 Low XL1200L
Sportster 1200 Nightster XL1200N
Sportster 883 XL883
Sportster 883 Custom XL883C
Sportster 883L XL883L
Sportster 883R XL883R
Street Bob FXDB
<u>2008</u>
Dyna Low Rider FXDL
Dyna Super Glide FXD
Softail Rocker FXCW
Softail Rocker C FXCWC
Sportster 1200 Custom XL1200C
Sportster 1200 Low XL1200L
Sportster 1200 Nightster XL1200N
Sportster 883 XL883
Sportster 883 Custom XL883C
Sportster 883L XL883L
Street Bob FXDB
<u>2009</u>
1200 Nightster XL1200N
Dyna Low Rider FXDL
Dyna Street Bob FXDB

Dyna Super Glide FXD
Iron 883 XL883N
Softail Rocker FXCW
Softail Rocker C FXCWC
Sportster 1200 Custom XL1200C
Sportster 1200 Low XL1200L
Sportster 883 Custom XL883C
Sportster 883L XL883L
<u>2010</u>
1200 Nightster XL1200N
Forty-Eight XL1200X
Iron 883 XL883N
Rocker C FXCWC
Sportster 1200 Custom XL1200C
Sportster 1200 Low XL1200L
Sportster 883 Low XL883L
Street Bob FXDB
Super Glide FXD
Wide Glide FXDWG

<u>2011</u>
1200 Nightster XL1200N
Forty-Eight XL1200X
Iron 883 XL883N
Sportster 1200 Custom XL1200C
Sportster 1200 Low XL1200L
Street Bob FXDB
SuperLow XL883L
Wide Glide FXDWG
<u>2012</u>
1200 Nightster XL1200N
Forty-Eight XL1200X
Iron 883 XL883N
Seventy-Two XL1200V
Sportster 1200 Custom XL1200C
SuperLow XL883L
<u>2013</u>
Forty-Eight XL1200X
Iron 883 XL883N
Seventy-Two XL1200V
Sportster 1200 Custom XL1200C
SuperLow XL883L

DL-04HD

Part#: BA077410

<u>2011</u>
Blackline FXS
Rocker C FXCWC
<u>2012</u>
Blackline FXS
Street Bob FXDB
Wide Glide FXDWG
<u>2013</u>
Blackline FXS
Breakout FXSB
Street Bob FXDB
Wide Glide FXDWG
<u>2014</u>
Breakout FXSB
Forty-Eight XL1200X
Iron 883 XL883N
Low Rider FXDL
Seventy-Two XL1200V
Sportster 1200 Custom XL1200C
Street Bob FXDB
SuperLow XL883L
SuperLow 1200T XL1200T
Wide Glide FXDWG
<u>2015</u>
Breakout FXSB
Forty-Eight XL1200X
Iron 883 XL883N
Low Rider FXDL
Seventy-Two XL1200V
Sportster 1200 Custom XL1200C
Street Bob FXDB

SuperLow XL883L
SuperLow 1200T XL1200T
Wide Glide FXDWG
<u>2016</u>
Breakout FXSB
Forty-Eight XL1200X
Iron 883 XL883N
Low Rider FXDL
Low Rider S FXDLS
Roadster XL1200CX
Seventy-Two XL1200V
Sportster 1200 Custom XL1200C
Street Bob FXDB
SuperLow XL883L
SuperLow 1200T XL1200T
Wide Glide FXDWG
<u>2017</u>
Breakout FXSB
Forty-Eight XL1200X
Iron 883 XL883N
Low Rider FXDL
Low Rider S FXDLS
Roadster XL1200CX
Sportster 1200 Custom XL1200C
Street Bob FXDB
SuperLow XL883L
SuperLow 1200T XL1200T
Wide Glide FXDWG
<u>2018</u>
Forty-Eight XL1200X
Forty-Eight Special XL1200XS

Iron 1200 XL1200NS
Iron 883 XL883N
Roadster XL1200CX
Sportster 1200 Custom XL1200C
SuperLow XL883L
<u>2019</u>
1200 Custom XL1200C
Forty-Eight XL1200X
Forty-Eight Special XL1200XS
Iron 1200 XL1200NS
Iron 883 XL883N
Roadster XL1200CX
SuperLow XL883L

<u>2020</u>
Forty-Eight XL1200X
Iron 1200 XL1200NS
Iron 883 XL883N
Roadster XL1200CX
<u>2021</u>
Forty-Eight XL1200X
Iron 1200 XL1200NS
Iron 883 XL883N
<u>2022</u>
Forty-Eight XL1200X
Iron 883 XL883N