



## INSTALLATION INSTRUCTIONS

### SISSY BAR SIDE STRAPS

For 2009-13 FLHR, FLHX, FLHT

Mfg. p/n 263750, 263850

(See pkg. label for Dist. p/n)

#### ATTENTION INSTALLER (if other than owner):

Please forward this instruction sheet and the warranty card to the purchaser of this product. These instructions also contain valuable information necessary to the end user.

#### INTRODUCTION:

These instructions describe the procedure for properly installing KHRÔME WERKS® Side Plates on 2009-2013 Harley-Davidson® FLHR, FLHX and FLHT models. Review instructions carefully before beginning, as they contain important information. Please retain for future reference.

Particularly important information is distinguished in these instructions by the following notations:

**NOTE:** A NOTE provides key information to make procedures easier or clearer.

**CAUTION:** A CAUTION indicates special procedures that must be followed to avoid damage to the motorcycle or accessories.

**WARNING:** A WARNING indicates special procedures that must be followed to avoid injury or death to a motorcycle operator or person inspecting or repairing the motorcycle.

#### TOOLS REQUIRED:

- 1 – #40 Torx key 3/8" square drive socket
- 1 – 3/16" hex key 3/8" square drive socket
- 1 – 3/8" square drive ratchet
- 1 – 3/8" square drive torque wrench

**CAUTION:** Buildup of chrome plating on fasteners may cause seizing or binding during installation. Use anti-seize lubricant on the 1/4"-20 button head screws to prevent this.

**Note:** Khrôme Werks Sissy Bar Side Straps fit with Khrôme Werks® or Harley-Davidson® 11.00" width sissy bar uprights

#### PROCEDURE:

1. Remove saddlebags.
2. Apply a couple of drops of red Loctite® to the two (2) 5/16"-18 x 1 3/4" chrome socket head screws (Ref 3). Install KW side straps (Ref 1) using supplied spacers (Ref 2), 5/16" flat washers (Ref 4) and the 5/16"-18 x 1 3/4" chrome socket head screws (Ref 3). Do not tighten yet. The side straps are properly positioned when the sissy bar channels are closest to the front of the bike. They may be mounted in the reversed position; however the sissy bar may be too far from the passenger.

3. Install the upright before the Loctite on the 5/16" screws dries. Apply a couple of drops of blue Loctite to the four (4) 1/4"-20 button screws and install. Torque to 10 ft-lbs.

4. Torque the 5/16" Torx screws to 17 ft-lbs.

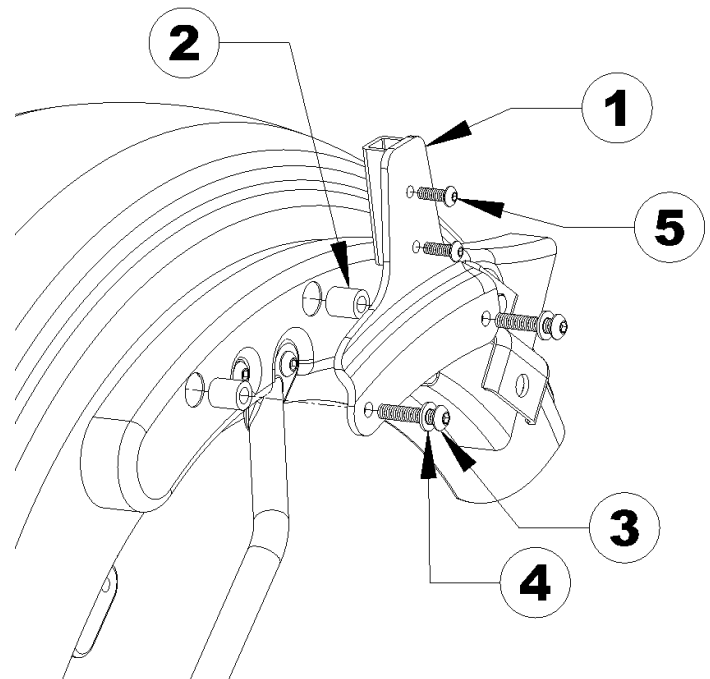
5. Mount pad (optional, if desired).

6. Reinstall the saddlebags.

**USE AND CARE:** Wash your accessories with the same care you use when washing your motorcycle. Use mild soap and water. DO NOT use abrasive chemicals or cleaners, or high pressure washers.

#### Suggested Khrôme Werks® Uprights

264152	11.00" Lowboy Upright
264852	11.00" Lowboy Upright, Black
264153	11.00" Mini Lowboy Upright
264853	11.00" Mini Lowboy Upright, Black
263619	11.00" Round Upright
263819	11.00" Round Upright, Black
264189	11.00" Bantam Upright



**KHRÔME WERKS®**

div. D.S. Manufacturing, Inc. • 67 Fifth St. N.E. • Pine Island, MN 55963