



PRODUCT DESCRIPTION

2007-LATER TWIN CAM MODELS (6SPD) including 06 DYNA MODELS

0177-2022

1987-2006 BIG TWIN MODELS (5SPD) except 06 DYNA MODELS

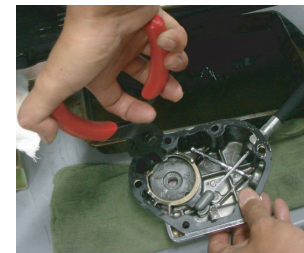
0177-2031

Caution: On some exhaust systems the Clarity Clutch Actuator can be very close to the exhaust. When installing, please verify there is an adequate distance of at least 5/16" between the Clarity window and the exhaust pipe to allow adequate air flow and cooling. Failure to verify the gap distance may result in severe damage to the Clarity windows, window discoloration, and potential oil leakage.

Disclaimer: Roland Sands Design is not responsible for damage caused by improper installation.

For questions pertaining to the installation of this product, please contact the Performance Machine technical department at 1-800-479-4037. This product is manufactured in the USA by Performance Machine LLC.

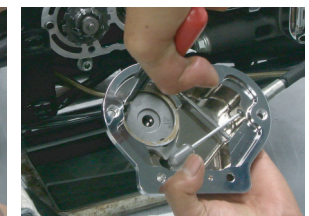
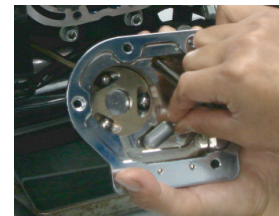
1. Place motorcycle on a secure lift or stand, turn your motorcycle off and disconnect the battery.
2. On most models removal of the exhaust will be necessary to allow installation. Consult the HD service manual for specific instructions. Place an oil pan underneath the cable clutch actuator area and remove the existing cover.
3. Once the existing clutch actuator cover is removed, clean all gasket/mounting surfaces and wipe out all excess oil.
WARNING: DO NOT USE HARSH CHEMICALS SUCH AS BRAKE CLEANER OR ACETONE DURING CLEANING.
4. With the actuator cover removed, use a circlip pliers to remove the factory retaining ring, inner ramp and cable coupler, 3 ball bearings, and the outer ramp plate. These components will be reused.



5. Remove the threaded cable from the clutch actuator cover using a 9/16" wrench.
6. Now you are ready to install the RSD Nostalgia clutch actuator. Start by installing the threaded clutch cable into the cover using the 9/16" wrench. Make sure the o-ring is not damaged prior to installation.



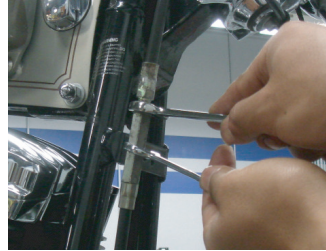
7. Install factory outer ramp plate, 3 ball bearings (hint:use a dab of grease to hold them in), inner ramp and cable coupler, and circlip as shown below.





Clarity Clutch Actuator

8. Install the RSD clutch actuator onto the transmission using the supplied gasket and hardware. Torque the six 1/4"-20 socket head cap screws to 100 in-lbs. Verify clutch adjustment and adjust if necessary per factory specifications. Re-install any exhaust components if necessary and check clearances.



9. **5SPD MODELS ONLY:** With the bike on the side stand remove the dipstick on the clutch housing and fill with transmission fluid until fluid level is in between the 2 grooves on the RSD Nostalgia clutch actuator dip-stick.
DISCLAIMER: The fluid level grooves are for reference only and the technician should consult the factory service manual for specific fluid specifications and capacity.



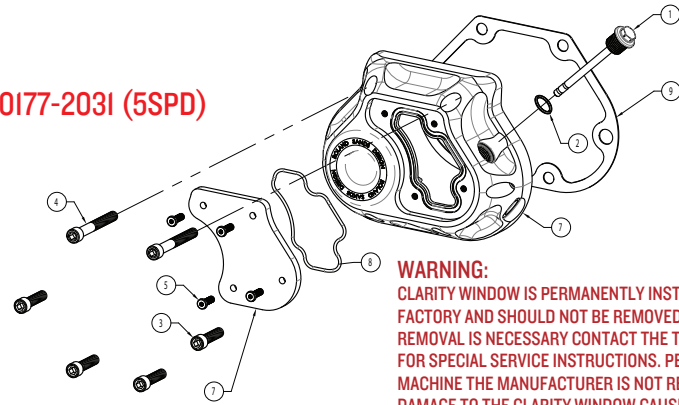
10. **6SPD MODELS ONLY:** With the bike on the side stand remove the dipstick in the transmission case and fill with transmission fluid until fluid level is at the "full" mark. Consult the factory service manual for specific fluid specifications and capacity.



11. Hit the road!

For questions pertaining to the installation of this product, please contact the Performance Machine technical department at 1-800-479-4037. This product is manufactured in the USA by Performance Machine LLC.

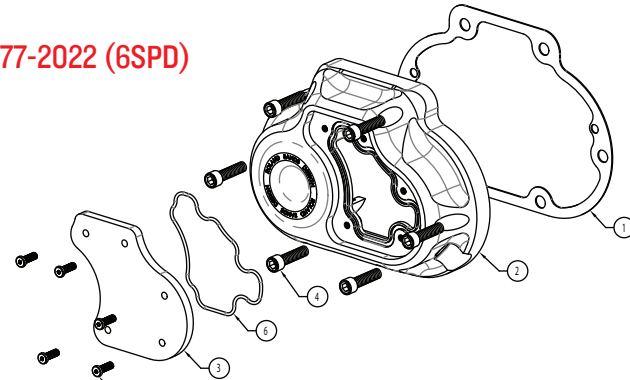
0177-2031 (5SPD)



WARNING:
 CLARITY WINDOW IS PERMANENTLY INSTALLED AT THE FACTORY AND SHOULD NOT BE REMOVED OR SERVICED. IF REMOVAL IS NECESSARY CONTACT THE TECH DEPARTMENT FOR SPECIAL SERVICE INSTRUCTIONS. PERFORMANCE MACHINE THE MANUFACTURER IS NOT RESPONSIBLE FOR DAMAGE TO THE CLARITY WINDOW CAUSED BY IMPROPER SERVICE.

ITEM NO.	DESCRIPTION	QTY
1	DIP STICK ASSY, CLUTCH COVER	1
2	O-RING 9/16 X 7/16 X 1/16 VITON	1
3	SHCS 1/4-20 X 1 CHROME	4
4	SHCS 1/4-20 X 2, CHROME PLATE	2
5	SHCS LOW HEAD 8-32 X 1/2 W/ VIBRA-TITE	4
6	RSD CLARITY CABLE CLUTCH HOUSING, 1987-06 BIG TWIN 5 SPEED	1
7	WINDOW, RSD CLARITY CABLE CLUTCH, 1987-06 BIG TWIN 5 SPEED	1
8	O-RING	1
9	GASKET, SLAVE CLUTCH HOUSING	1

0177-2022 (6SPD)



ITEM NO.	DESCRIPTION	QTY
1	6 SPEED CLUTCH GASKET	1
2	RSD CLARITY CABLE CLUTCH COVER, FXST 07-12, FL & FXD 06-12	1
3	WINDOW, RSD CLARITY CABLE CLUTCH COVER	1
4	SHCS 1/4-20 X 1 CHROME	6
5	SHCS LOW HEAD 8-32 X 1/2 W/ VIBRA-TITE	5
6	MOLDED O-RING, CLARITY CABLE CLUTCH COVER	1