

**Paul Yaffe's  
Bagger  
Nation™**

# **LIGHTNING BULLET** ⚡

**SUPER BRIGHT LED'S**



## **BOLT TO BULLET INSTALL INSTRUCTIONS**



**PAUL YAFFE ORIGINALS**  
DESIGN & DEVELOPMENT

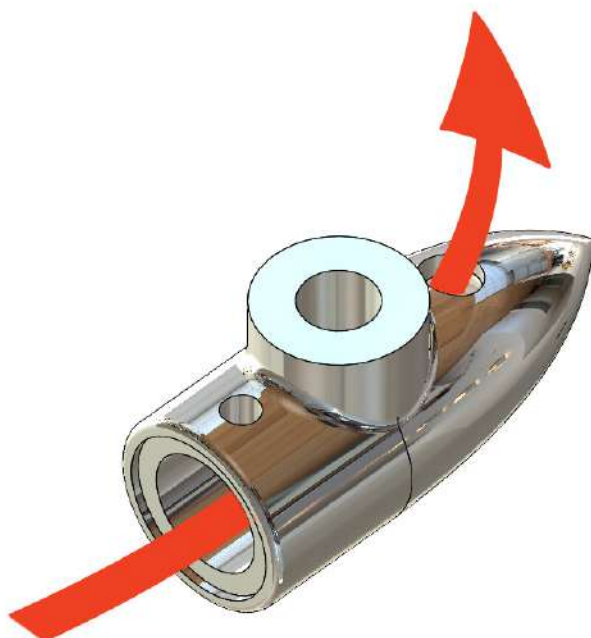


*BOLT*



*BULLET*

1. Once the application of the bullet is determined, cut the desired length of heat shrink and slide over wire ribbon up to the bolt and shrink down tight. Remove nuts from bolt. Set aside.
2. Route wire ribbon through front of bullet and out rear wire hole. Pull and push at the same time until the bezel of the bolt is seated into the front of the bullet. Secure bolt in bullet with the supplied 8-32 set screw.



- YOU MAY USE A SMALL AMOUNT OF BLUE 242 LOCTITE ON THE SET SCREW-

3. The bullet is then ready to install on mount at this time. The mounting point is 5/16"-24 thread pitch with a depth of 5/16" of threads.

**CAUTION: DO NOT RUN MOUNTING SCREW INTO THE LIGHT.**



# *LIGHTNING BULLET* ⚡

SUPER BRIGHT LED'S

**Paul Yaffe's**  
**Bagger**  
**Nation™**

602.840.4205  
BAGGERNATION.COM