



INSTALLATION INSTRUCTIONS

**Spyke Jackshaft Assembly
for BDL 3" Open Belt Drives
P/N 465049**

**READ THESE INSTRUCTIONS COMPLETELY BEFORE
BEGINNING INSTALLATION!**

NOTE: Refer to the Factory Shop Manual electrical section for safety instructions prior to performing any repairs or installations of electrical components.

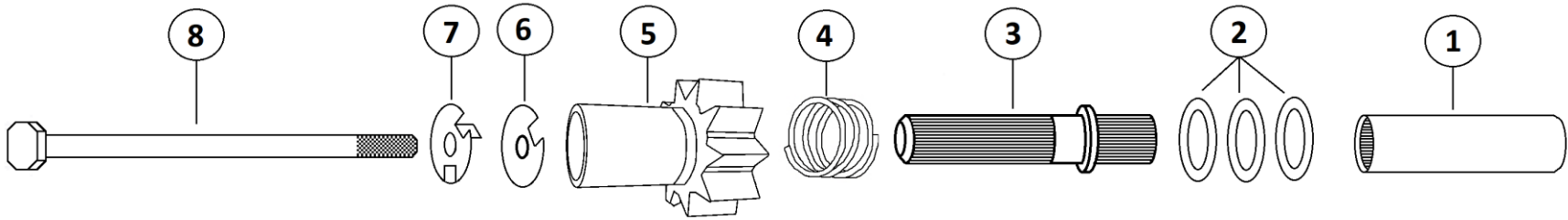
CAUTION! ALWAYS DISCONNECT THE BATTERY CABLES BEFORE PERFORMING ANY ELECTRICAL SYSTEM REPAIRS OR MODIFICATIONS. THIS WILL PREVENT DAMAGE TO THE ELECTRICAL SYSTEM OR ACCIDENTAL STARTING OF THE MOTORCYCLE IN CASE OF AN ELECTRICAL ARC CAUSED BY SHORTING THE BATTERY POWER TO GROUND.

WARNING! SEVERE DAMAGE TO THE ELECTRICAL SYSTEM OR PERSONAL INJURY MAY OCCUR BY NOT FOLLOWING THE ABOVE SAFETY INSTRUCTIONS.

Installation:

1. Use the illustration to coordinate the direction parts are to be installed onto the starter. Install coupling (1) onto the end of the starter shaft (beveled edge first). Then slide the main shaft (3) into the coupling (1). Slide spring (4) onto the main shaft (3). Slide pinion (5) onto main shaft (3).
2. Align lockplate tab (7) and thrust washer (6) with the main shaft (3) keyway. Screw the jackshaft bolt (8) into the starter shaft.
3. Hold the pinion (5) in position and tighten the jackshaft bolt (8) to 60 in. lbs.
4. Bend locking tab (7) against bolt head.

NOTE: If the air gap between pinion tooth and ring gear tooth exceeds .125", use shims (2) to get air gap between .075" to .125".



- 1. Coupling
- 2. Shims
- 3. Main Shaft
- 4. Spring
- 5. Pinion
- 6. Thrust Washer
- 7. Lockplate
- 8. Jackshaft Bolt

For technical assistance call 909/547-9058

PerTronix, LLC.
440 E. Arrow Hwy.
San Dimas, CA 91773



LIMITED WARRANTY

PerTronix, LLC. Warrants to the original Purchaser of its (product) shall be free from defects in material and workmanship for a period of (12) months from the date of purchase.

If within the period of the foregoing warranty PerTronix finds, after inspection, that the product or any component thereof is defective, PerTronix will, at its option, repair such products or component or replace them with identical or similar parts PROVIDED that within such period Purchaser Promptly Notifies PerTronix, in writing, of such defects.