



14025 Cty Hwy G  
Viola, Wisconsin 54664

Phone: 608-627-1497  
Technical Service Email: sstech@sscycycle.com  
Website: www.sscycycle.com

© 2023

by S&S® Cycle, Inc.

All rights reserved.

Printed in the U.S.A.

## Installation Instructions: Race Only Qualifier 2-1 Exhaust For Challenger (part numbers 550-1082, 550-1084)

### DISCLAIMER:

Many S&S parts are designed for high performance, closed course, racing applications and are intended for the very experienced rider only. The installation of S&S parts may void or adversely affect your factory warranty. In addition such installation and use may violate certain federal, state, and local laws, rules and ordinances as well as other laws when used on motor vehicles used on public highways. Always check federal, state, and local laws before modifying your motorcycle. It is the sole and exclusive responsibility of the user to determine the suitability of the product for his or her use, and the user shall assume all legal, personal injury risk and liability and all other obligations, duties, and risks associated therewith.

The name Indian® is used in reference only. S&S Cycle is not associated with Indian® and we in no way are implying that any of S&S Cycle's products are original equipment parts.

FOR CLOSED COURSE COMPETITION USE ONLY. NOT INTENDED FOR STREET USE. LEGAL IN CALIFORNIA ONLY FOR RACING VEHICLES WHICH MAY NEVER BE USED, OR REGISTERED OR LICENSED FOR USE, UPON A HIGHWAY. NOT LEGAL FOR SALE OR USE NATIONWIDE ON ANY FEDERAL POLLUTION CONTROLLED MOTOR VEHICLE UNDER THE CLEAN AIR ACT.

### SAFE INSTALLATION AND OPERATION RULES:

Before installing your new S&S part, it is your responsibility to read and follow the installation and maintenance procedures in these instructions and follow the basic rules below for your personal safety.

- Gasoline is extremely flammable and explosive under certain conditions and toxic when breathed. Do not smoke. Perform installation in a well ventilated area away from open flames or sparks.
- If motorcycle has been running, wait until engine and exhaust pipes have cooled down to avoid getting burned before performing any installation steps.
- Before performing any installation steps, disconnect battery to eliminate potential sparks and inadvertent engagement of starter while working on electrical components.
- Read instructions thoroughly and carefully so all procedures are completely understood before performing any installation steps. Contact S&S with any questions you may have if any steps are unclear or any abnormalities occur during installation or operation of motorcycle with an S&S part on it.
- Consult an appropriate service manual for your motorcycle for correct disassembly and reassembly procedures for any parts that need to be removed to facilitate installation.
- Use good judgment when performing installation and operating motorcycle. Good judgment begins with a clear head. Don't let alcohol, drugs or fatigue impair your judgment. Start installation when you are fresh.
- Be sure all federal, state and local laws are obeyed with the installation.
- For optimum performance and safety and to minimize potential damage to carb or other components, use all mounting hardware that is provided and follow all installation instructions.
- Motorcycle exhaust fumes are toxic and poisonous and must not be breathed. Run motorcycle in a well ventilated area where fumes can dissipate.

### IMPORTANT NOTICE:

Statements in this instruction sheet preceded by the following words are of special significance.



**WARNING**

Means there is the possibility of injury to yourself or others.



**CAUTION**

Means there is the possibility of damage to the part or motorcycle.

**NOTE**

*Other information of particular importance has been placed in italic type.*

*S&S recommends you take special notice of these items.*

### WARRANTY:

All S&S parts are guaranteed to the original purchaser to be free of manufacturing defects in materials and workmanship for a period of twenty-four (24) months from the date of purchase. Merchandise that fails to conform to these conditions will be repaired or replaced at S&S's option if the parts are returned to us by the purchaser within the 24 month warranty period or within 10 days thereafter.

In the event warranty service is required, the original purchaser must call or write S&S immediately with the problem. Some problems can be rectified by a telephone call and need no further course of action.

A part that is suspect of being defective must not be replaced by a Dealer without prior authorization from S&S. If it is deemed necessary for S&S to make an evaluation to determine whether the part was defective, a return authorization number must be obtained from S&S. The parts must be packaged properly so as to not cause further damage and be returned prepaid to S&S with a copy of the original invoice of purchase and a detailed letter outlining the nature of the problem, how the part was used and the circumstances at the time of failure. If after an evaluation has been made by S&S and the part was found to be defective, repair, replacement or refund will be granted.

### ADDITIONAL WARRANTY PROVISIONS:

- (1) S&S shall have no obligation in the event an S&S part is modified by any other person or organization.
- (2) S&S shall have no obligation if an S&S part becomes defective in whole or in part as a result of improper installation, improper maintenance, improper use, abnormal operation, or any other misuse or mistreatment of the S&S part.
- (3) S&S shall not be liable for any consequential or incidental damages resulting from the failure of an S&S part, the breach of any warranties, the failure to deliver, delay in delivery, delivery in non-conforming condition, or for any other breach of contract or duty between S&S and a customer.

## S&S Qualifier 2 into 1 for Indian Challenger

1. Remove the stock exhaust system from your motorcycle following your factory service manual. If you haven't already removed your oxygen sensors from the headers, do so now.
2. Remove the saddlebags from your motorcycle following your factory service manual.

## S&S Exhaust System Installation

1. Remove the heat shield and bracket from the frame and engine from your motorcycle. See Picture 1



Picture 1

2. Locate the drill template in the S&S hardware kit and bolt it to the bracket that was removed from the motorcycle. See Picture 2



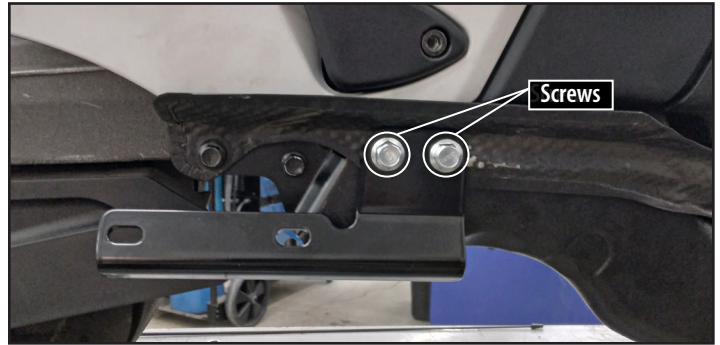
Picture 2

3. Drill the heat shield and bracket using a 3/8" drill. See Picture 3



Picture 3

4. Remount the drilled bracket and heat shield to the bike using the two supplied screws and exhaust mounting bracket. Torque screws to 15 ft lbs. See Picture 4



Picture 4

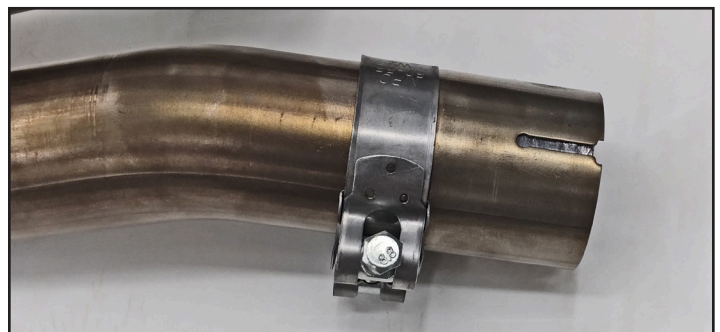
5. Inspect exhaust gaskets in cylinder head ports for damage. If damaged, purchase new gaskets from your Indian Motorcycle dealer.

6. Install supplied gasket into the S&S header collector. See Picture 5



Picture 5

7. Install the supplied clamp over the header. See Picture 6



Picture 6

8. Install the front header onto the motorcycle but leave loose.

9. Install rear header onto motorcycle but leave it loose.

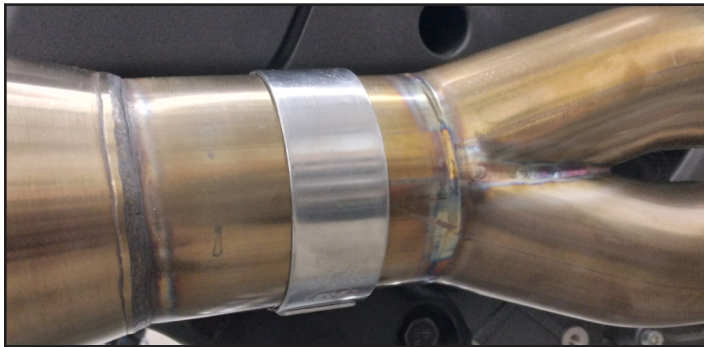


10. Picture 7 shows front and rear headers installed loosely on the motorcycle.



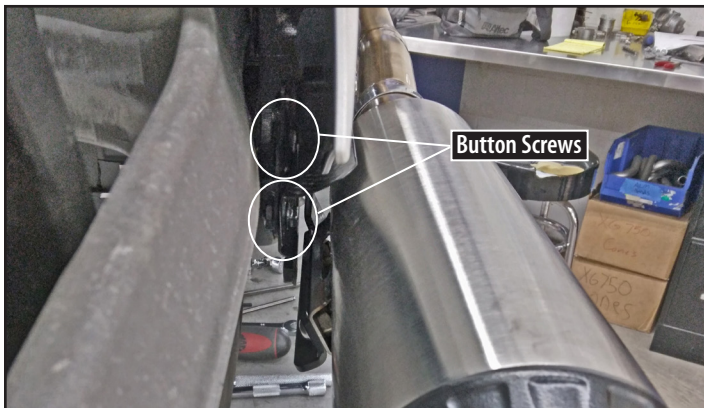
Picture 7

11. Install the muffler clamp over the muffler and onto the header/collector. See Picture 8



Picture 8

12. Install the supplied button head screws through the muffler mounting bracket and into the muffler. Torque screws to 15 ft lbs. See Picture 9

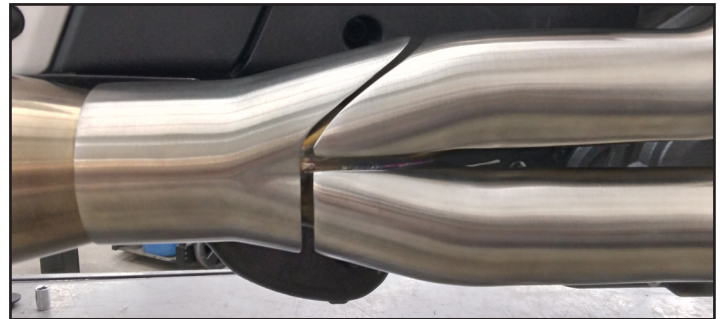


Picture 9

13. Tighten all fasteners up evenly and tighten clamps. Torque clamps to 15-18 ft lbs

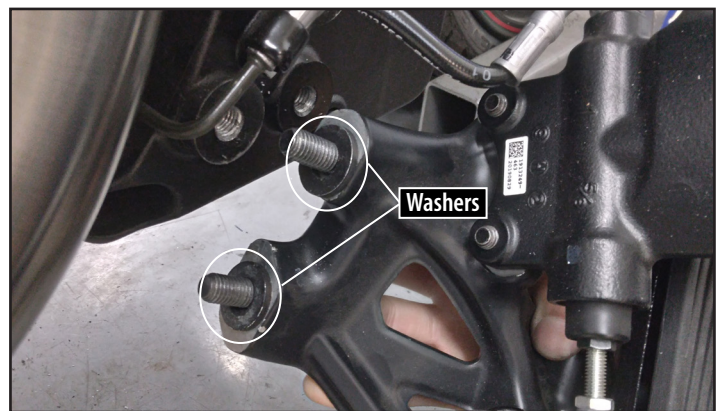
14. Install oxygen sensors that were removed from the stock head pipes into the new S&S head pipes. Note: S&S recommends a small amount of anti seize to the treads of the oxygen sensors prior to reinstalling.

15. Install all three heat shields onto the headers and collector. Picture 10 shows the final install and approximate gap between each.



Picture 10

16. Re-install the factory floorboard/brake using one supplied washer per bolt to space the floorboard/brake away from the exhaust. See Picture 11



Picture 11

17. Wipe down exhaust to remove all grease, dirt and fingerprints prior to starting the bike.

## S&S Saddlebag Mount Installation

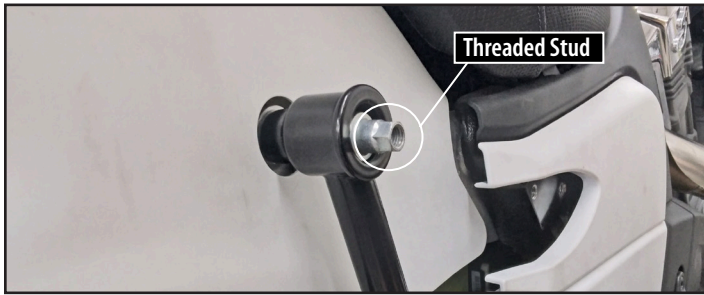
1. Remove front bag mount standoff. (Picture 12) You will not need the billet aluminum piece to install the S&S bag mount but you will need the threaded stud.



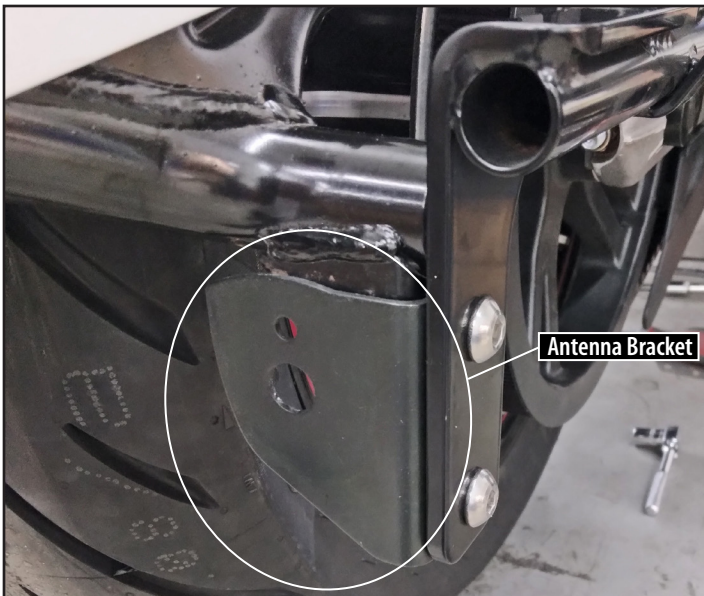
Picture 12



2. Install the S&S right side bag mount using the stock threaded stud (Picture 13) and the supplied button head screws and nuts. Make certain to install the stock antenna bracket as illustrated in Picture 14. Torque screws to 15 ft lbs.



Picture 13



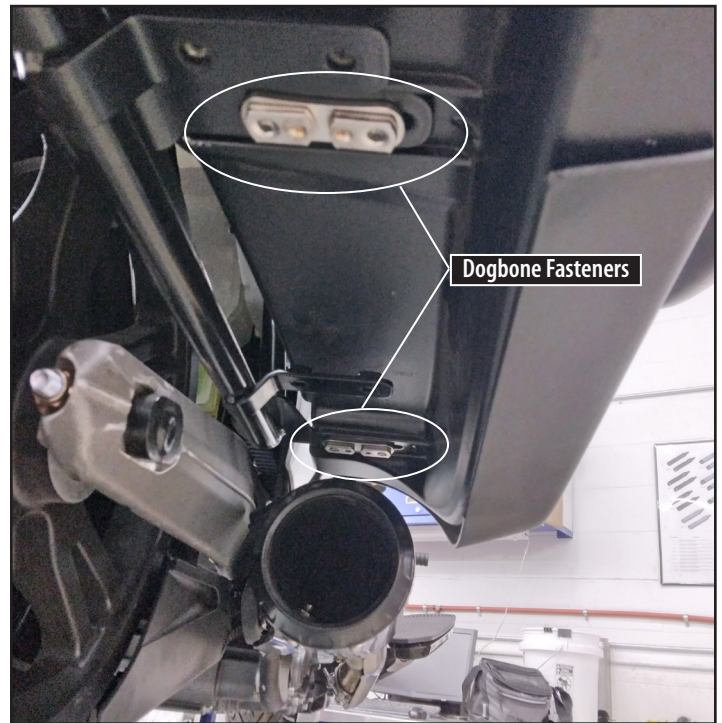
Picture 14

3. Install the stock rubber washer to the top front bag mount (Picture 15) and install the saddle bag using the stock hardware for the top two bolts.



Picture 15

4. Secure the lower saddlebag by using the stock bolts and S&S supplied dog bone fasteners (Picture 16). Note Before tightening the lower 4 bolts, ensure the saddlebag lid closes securely and evenly. Once aligned and the lid closes securely and evenly, finish tightening all bolts. Torque screws to 50 in lbs



Picture 16

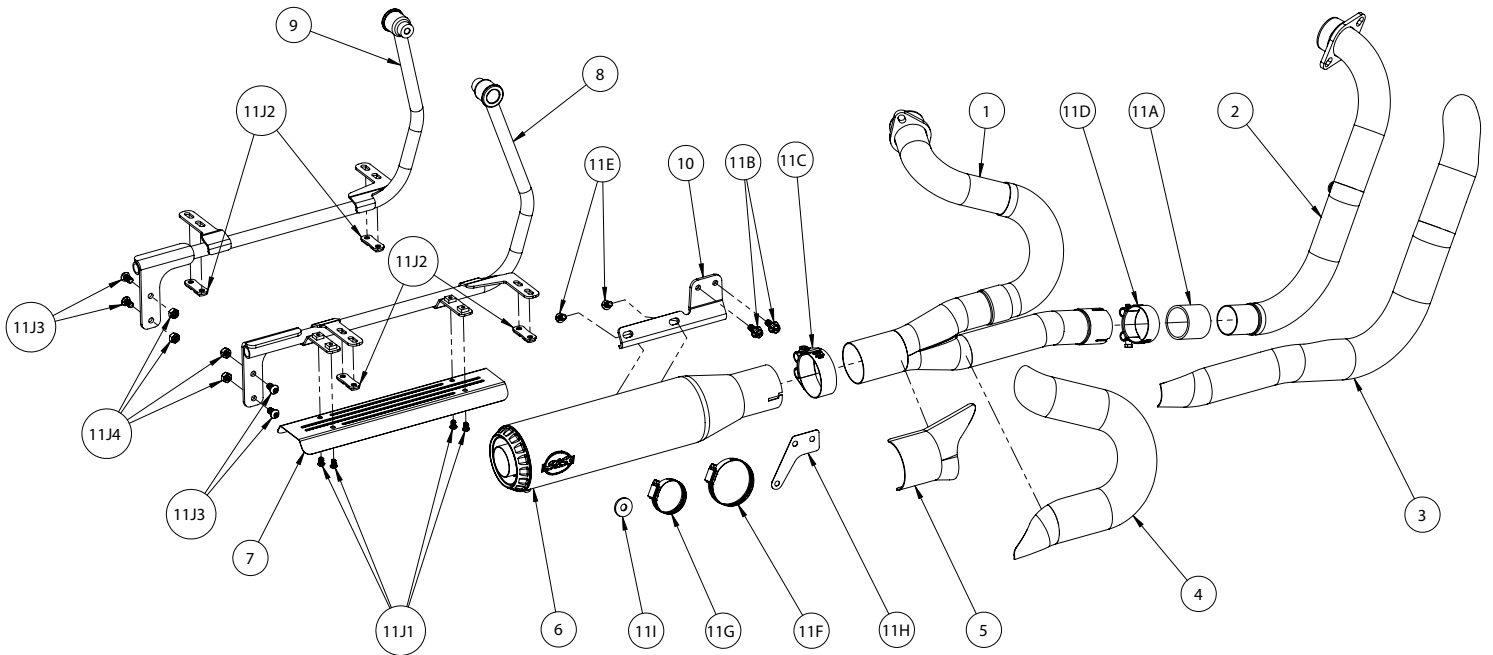
5. Install the supplied saddlebag heat shield to the bottom of the right side saddlebag using supplied (qty 4) fasteners. Apply blue threadlocker to the threads and Torque to 70 in lbs See Picture 17



Picture 17

6. Reattach antenna to the bag/antenna mount.

7. Install left side bag mount following the same steps for installing the right side bag mount.



## Replacement Parts

1. Pipe, Header, 2 Into 1, Qualifier, Welded, Indian® Challenger.....	551-1900	11A. Gasket, Muffler, 1.75" Id X 2.0" Od X 1.75" Length.....	551-1129
2. Tube, Front, Head Pipe, Qualifier, 2-1, Formed, 1.875" X .049" Wall.....	551-1894	11B. Screw, Hex Head, Flanged, M8 X 1.25 X 20mm, Grade 9.8.....	500-1534
3. Front Shield		11C. Clamp, Muffler, Band Style, M8-1.25" X 60mm Bolt, 2.5" Diameter.....	551-1272
A. Heat Shield, Front, 2 Into 1, Qualifier, Brushed, Stainless Steel.....	551-1937	11D. Clamp, Muffler, Band Style, M8-1.25" X 60mm Bolt, 2.5" Diameter.....	551-1181
B. Heat Shield, Front, 2 Into 1, Qualifier, Black, Stainless Steel.....	551-1938	11E. Screw, Bhc, M8 X 1.25 X 14mm, Stainless Steel.....	500-1354
4. Rear Shield		11F. Clamp, Hose, Worm Drive, Sae #40.....	551-0402
A. Heat Shield, Rear, 2 Into 1, Qualifier, Brushed, Stainless Steel.....	551-1940	11G. Clamp, Hose, Worm Drive, Sae #24.....	500-0791
B. Heat Shield, Rear, 2 Into 1, Qualifier, Black, Stainless Steel.....	551-1941	11H. Template, Drill Pattern, Stock Heat Shield, 2 Into 1, Qualifier.....	551-1993
5. Collector Shield		11I. Spacer, Black, 1.125" Od X .410" Id X .125, Aluminum, 6061.....	551-1942
A. Heat Shield, Collector, 2 Into 1, Qualifier, Brushed, Stainless Steel.....	551-2144	11J. Hardware Kit, Bag Mount.....	551-2126
B. Heat Shield, Collector, 2 Into 1, Qualifier, Black, Stainless Steel.....	551-2145	11J1. Screw, Bhc, High Temp Lock Patch, M6 X 10mm, Stainless Steel.....	500-1090
6. Muffler		11J2. Plate, Nut, M6 X 1, 33mm Hole Spacing, Stainless Steel.....	551-2113
A. Muffler, Assembly, Qualifier 2-1, Race Only, 2.5" Inlet, 4" Muffler, Brushed.....	551-2147	11J3. Screw, Bhc, M8 X 16mm, Stainless Steel.....	500-1189
B. Muffler, Assembly, Qualifier 2-1, Race Only, 2.5" Inlet, 4" Muffler, Black.....	551-2148	11J4. Nut, Lock, Nylon Insert, M8 X 1.25mm X 13mm X 8mm, Stainless Steel.....	500-1100
7. Heat Shield, Saddle Bag, Qualifier, 2-1, Formed, Stainless Steel.....	551-1944		
8. Bracket, Assembly, Right, Bag Mount, Powdercoated.....	551-1879		
9. Bracket, Assembly, Left, Bag Mount, Powdercoated,.....	551-1880		
10. Bracket, Muffler, 2 Into 1, Qualifier, 2-1, Powdercoated, Black.....	551-1912		
11. Hardware Kit, Qualifier, 2 Into 1.....	551-1992		