



## Installation Instructions: S&S Qualifier 2-1 for Harley Davidson 2006-'07 Dyna Models Except CVO models (part numbers 550-1097, 550-1098)

### DISCLAIMER:

Many S&S parts are designed for high performance, closed course, racing applications and are intended for the very experienced rider only. The installation of S&S parts may void or adversely affect your factory warranty. In addition such installation and use may violate certain federal, state, and local laws, rules and ordinances as well as other laws when used on motor vehicles used on public highways. Always check federal, state, and local laws before modifying your motorcycle. It is the sole and exclusive responsibility of the user to determine the suitability of the product for his or her use, and the user shall assume all legal, personal injury risk and liability and all other obligations, duties, and risks associated therewith.

The name Harley Davidson® is used in reference only. S&S Cycle is not associated with Harley Davidson and we in no way are implying that any of S&S Cycle's products are original equipment parts.

\*Qualified manufacturer declared U.S. 50-State legal emissions compliant part on MY 2006-2007 Non-CVO Dyna models

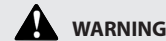
### SAFE INSTALLATION AND OPERATION RULES:

Before installing your new S&S part, it is your responsibility to read and follow the installation and maintenance procedures in these instructions and follow the basic rules below for your personal safety.

- Gasoline is extremely flammable and explosive under certain conditions and toxic when breathed. Do not smoke. Perform installation in a well ventilated area away from open flames or sparks.
- If motorcycle has been running, wait until engine and exhaust pipes have cooled down to avoid getting burned before performing any installation steps.
- Before performing any installation steps, disconnect battery to eliminate potential sparks and inadvertent engagement of starter while working on electrical components.
- Read instructions thoroughly and carefully so all procedures are completely understood before performing any installation steps. Contact S&S with any questions you may have if any steps are unclear or any abnormalities occur during installation or operation of motorcycle with an S&S part on it.
- Consult an appropriate service manual for your motorcycle for correct disassembly and reassembly procedures for any parts that need to be removed to facilitate installation.
- Use good judgment when performing installation and operating motorcycle. Good judgment begins with a clear head. Don't let alcohol, drugs or fatigue impair your judgment. Start installation when you are fresh.
- Be sure all federal, state and local laws are obeyed with the installation.
- For optimum performance and safety and to minimize potential damage to carb or other components, use all mounting hardware that is provided and follow all installation instructions.
- Motorcycle exhaust fumes are toxic and poisonous and must not be breathed. Run motorcycle in a well ventilated area where fumes can dissipate.

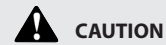
### IMPORTANT NOTICE:

Statements in this instruction sheet preceded by the following words are of special significance.



#### WARNING

Means there is the possibility of injury to yourself or others.



#### CAUTION

Means there is the possibility of damage to the part or motorcycle.

#### NOTE

*Other information of particular importance has been placed in italic type.  
S&S recommends you take special notice of these items.*

### WARRANTY:

All S&S parts are guaranteed to the original purchaser to be free of manufacturing defects in materials and workmanship for a period of twenty-four (24) months from the date of purchase. Merchandise that fails to conform to these conditions will be repaired or replaced at S&S's option if the parts are returned to us by the purchaser within the 24 month warranty period or within 10 days thereafter.

In the event warranty service is required, the original purchaser must call or write S&S immediately with the problem. Some problems can be rectified by a telephone call and need no further course of action.

A part that is suspect of being defective must not be replaced by a Dealer without prior authorization from S&S. If it is deemed necessary for S&S to make an evaluation to determine whether the part was defective, a return authorization number must be obtained from S&S. The parts must be packaged properly so as to not cause further damage and be returned prepaid to S&S with a copy of the original invoice of purchase and a detailed letter outlining the nature of the problem, how the part was used and the circumstances at the time of failure. If after an evaluation has been made by S&S and the part was found to be defective, repair, replacement or refund will be granted.

### ADDITIONAL WARRANTY PROVISIONS:

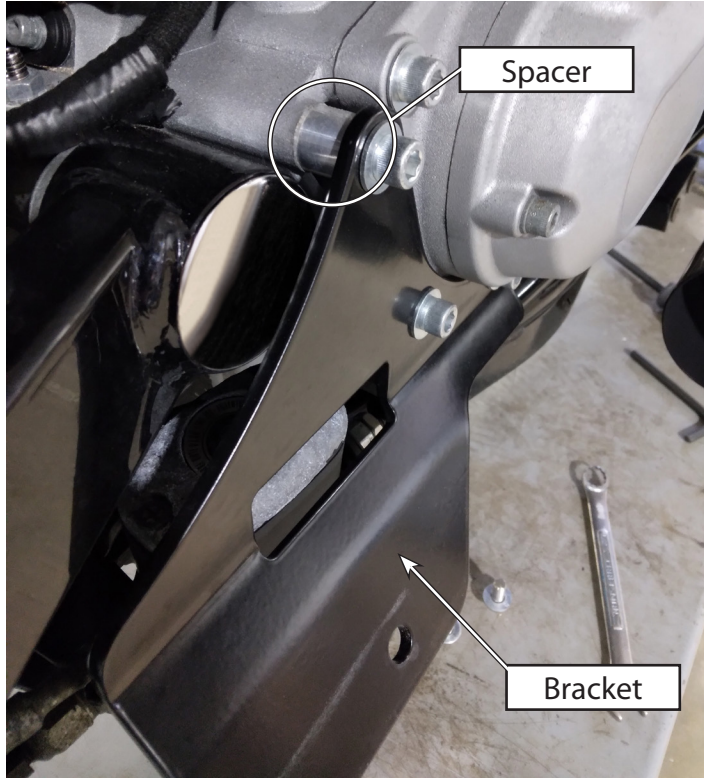
- (1) S&S shall have no obligation in the event an S&S part is modified by any other person or organization.
- (2) S&S shall have no obligation if an S&S part becomes defective in whole or in part as a result of improper installation, improper maintenance, improper use, abnormal operation, or any other misuse or mistreatment of the S&S part.
- (3) S&S shall not be liable for any consequential or incidental damages resulting from the failure of an S&S part, the breach of any warranties, the failure to deliver, delay in delivery, delivery in non-conforming condition, or for any other breach of contract or duty between S&S and a customer.

### S&S Qualifier 2 into 1 for Harley Davidson Dyna Models

1. Remove the stock exhaust system from your motorcycle following your factory service manual. If you haven't already removed your oxygen sensors from the headers, do so now.
2. Remove the exhaust gaskets from the exhaust ports from the front and rear cylinder heads.

### S&S Exhaust System Installation

1. Install supplied exhaust gaskets in cylinder head ports.
2. Install header system loosely to the motorcycle you are working on.
3. Install the heat shields loosely to the header pipes.
4. Install supplied bracket and spacer to the motorcycle transmission case. See Picture 1



Picture 1

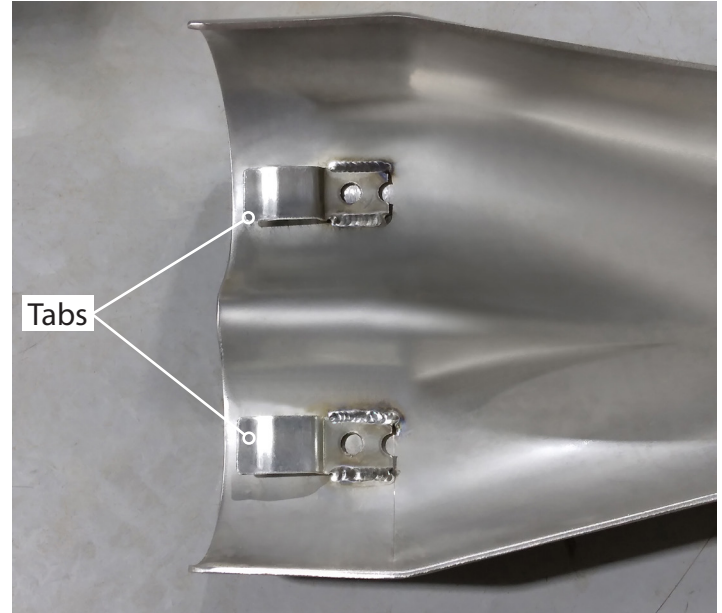
5. Install the supplied muffler clamp to the muffler. See Picture 2



Picture 2

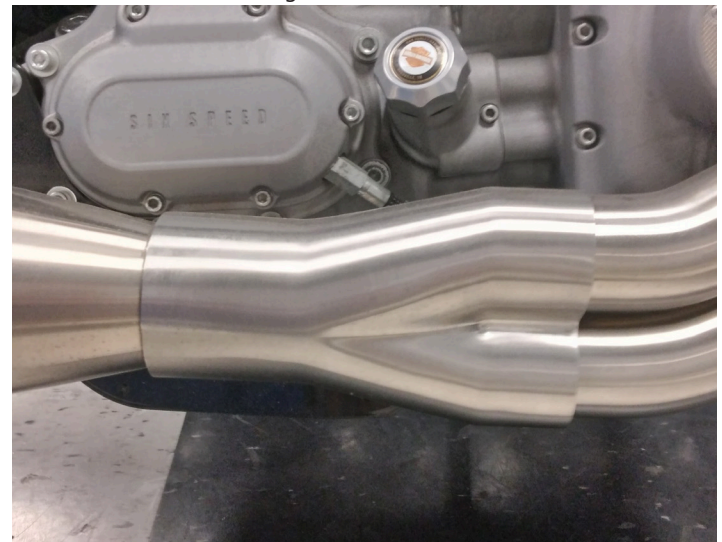
6. Install the muffler over the collector collector with the bracket on the muffler aligning to the bracket on the bike.

7. Using the supplied button head screws, attach the muffler to the bracket loosely.
8. Finish tightening the header pipes by tightening the 4 exhaust nuts (header flanges) to the cylinder heads.
9. Finish tightening the muffler to the bracket. (15 ft-lbs)
10. Tighten muffler clamp where it slips onto the collector. (15 - 18 ft-lbs)
11. Install the collector heat shield making sure the tabs (Picture 3) slip under the header heat shields.



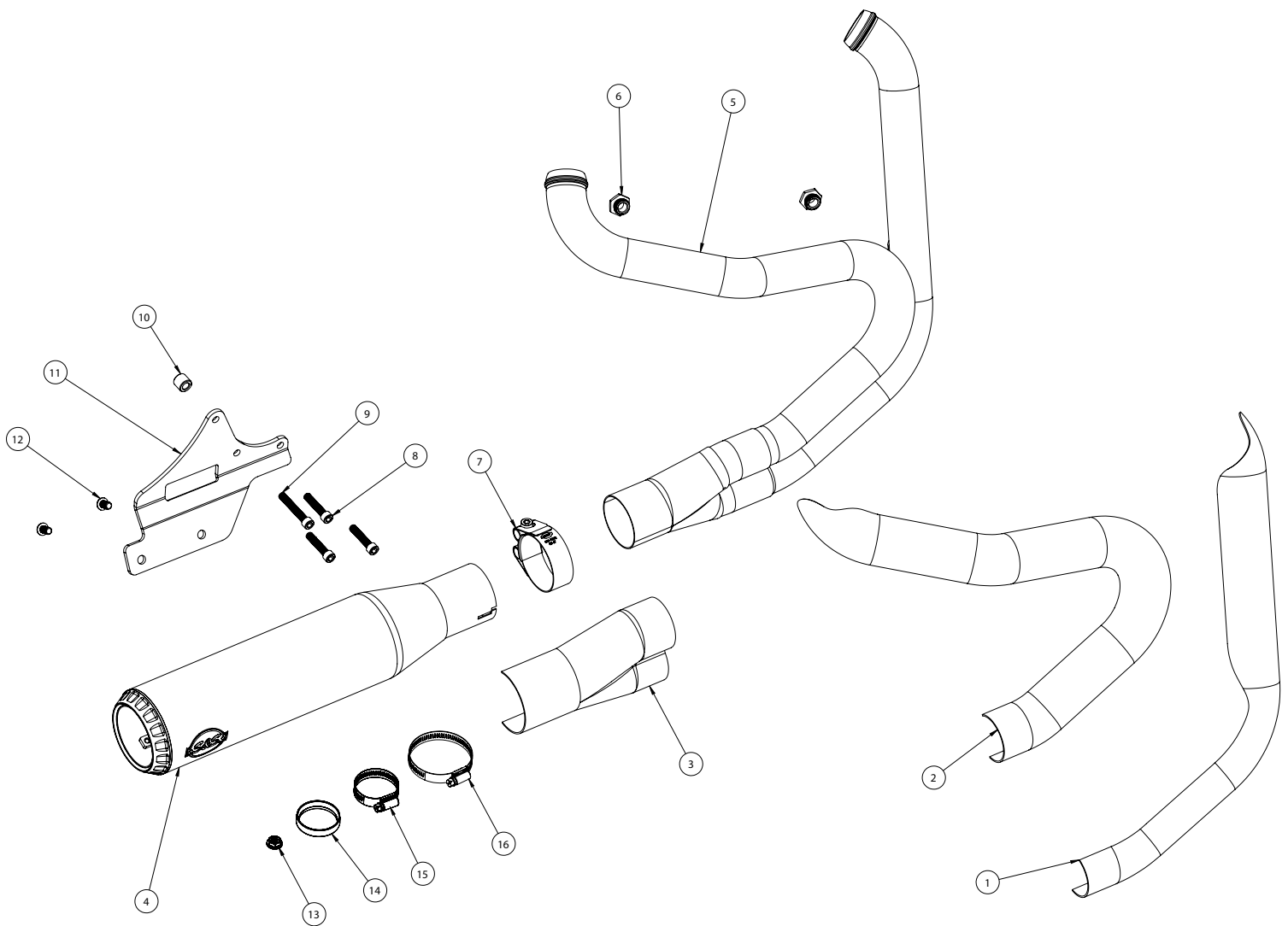
Picture 3

12. Once all heat shields are aligned, tighten all heat shields to the header pipes and collector. Picture 4 illustrates the collector heat shield and the header heat shield aligned.



Picture 4

13. Install oxygen sensors that were removed from the stock head pipes into the new S&S head pipes. Note: S&S recommends a small amount of anti seize to the treads of the oxygen sensors prior to reinstalling.
14. Wipe down exhaust to remove all grease, dirt and fingerprints prior to starting the bike.



1. Heat Shield	
A. Heat Shield, Front, 2 into 1, Brushed, Stainless Steel, 2006-'17 Dyna .....	551-2094
B. Heat Shield, Front, 2 into 1, Black, Stainless Steel, 2006-'17 Dyna .....	551-2095
2. Heat Shield	
A. Heat Shield, Rear, 2 into 1, Brushed, Stainless Steel, 2006-'17 Dyna .....	551-2096
B. Heat Shield, Rear, 2 into 1, Black, Stainless Steel, 2006-'17 Dyna .....	551-2097
3. Shield	
A. Shield, Collector, Qualifier, 2 into 1, Weldment, Brushed, Stainless Steel .....	551-2098
B. Shield, Collector, Qualifier, 2 into 1, Weldment, Black, Stainless Steel .....	551-2099
4. Muffler	
A. Muffler, Assembly, 2 Into 1, Qualifier, Race Only, 2.5" Inlet, 4" Muffler, Brushed, Stainless Steel .....	551-1988
B. Muffler, Assembly, 2 Into 1, Qualifier, Race Only, 2.5" Inlet, 4" Muffler, Denim Black, Stainless Steel .....	551-1989
5. Pipe, Header, Qualifier, 2 into 1, Weldment, 2006-'17 Dyna" .....	551-2104
6. Adapter, Oxygen Sensor, 12mm to 18mm, Stainless Steel .....	550-0375
7. Clamp, Muffler, Band Style, M8-1.25" x 60mm Bolt, 2.5" Diameter .....	551-1272
8. Screw, SHC, 5/16-18 x 1-1/2", Zinc Plated, ASTM A574-92A .....	106-4401
9. Screw, SHC, 5/16-18 x 2", Zinc Plated .....	500-0781
10. Spacer, Powdercoated, .625"X.332"X.55", Black .....	551-0570
11. Bracket, Muffler, Qualifier, 2 into 1, Powdercoated, Black, 2006-'17 Dyna" .....	551-2109
12. Screw, BHC, M8 x 1.25 x 14mm, Stainless Steel .....	500-1354
13. Nut, HSFH, 5/16-24 UNF-2B x .283", Zinc, Steel .....	50-5025-5
14. Gasket, Exhaust, Tapered, Stainless Steel .....	106-5029
15. Clamp, Hose, Worm Drive, SAE #20 .....	551-0527
16. Clamp, Hose, Worm Drive, SAE #40 .....	551-0402