

**Instruction 510-1291**  
**01.30.2025**

2025 S&S® Cycle, Inc.

All rights reserved.  
Printed in the U.S.A.



# **Installation Instructions:**

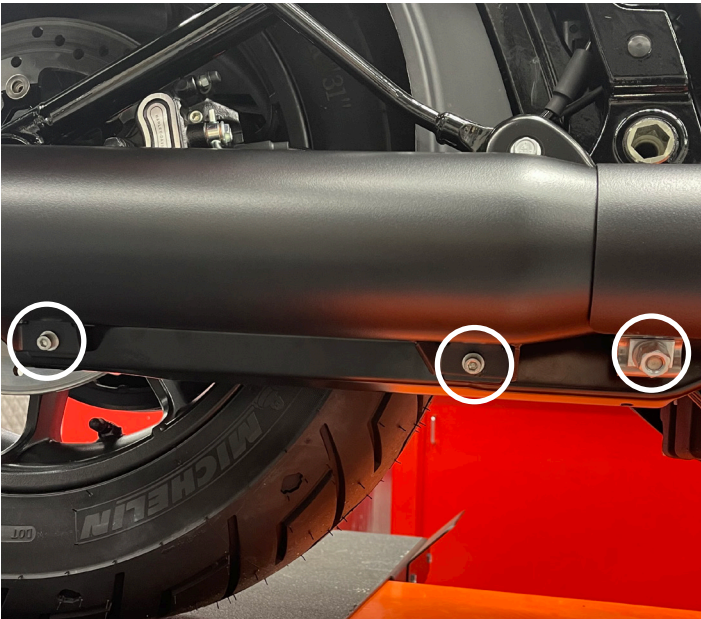
## **S&S Grand National Slip-On for 2025 Harley-Davidson® Softail®**

**Fits 2025 Harley Davidson Street Bob, Low Rider S, Low Rider ST, Heritage Classic Softail Models (part number 550-1159/550-1160)**



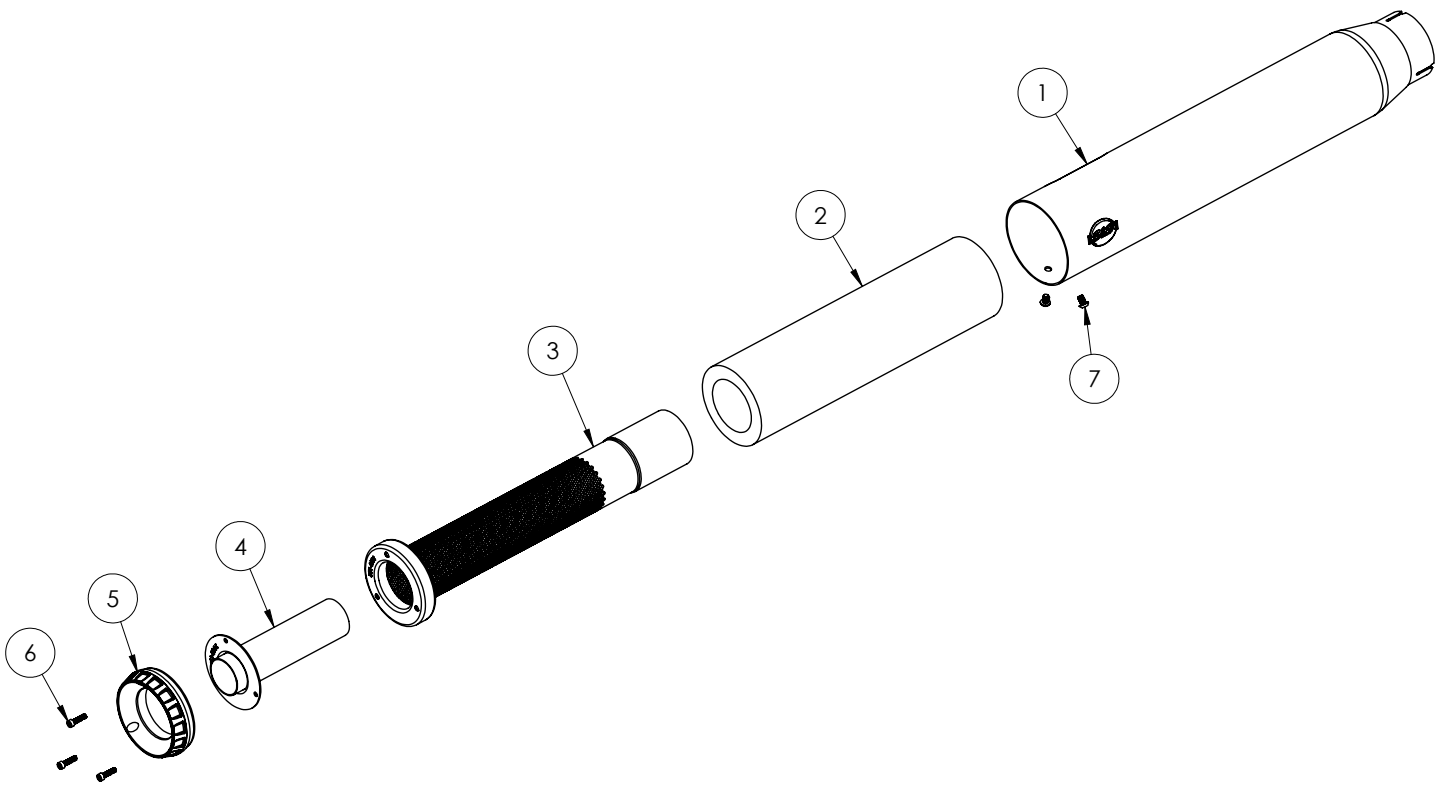
The Softail is known for its performance-oriented design and modern features while maintaining the classic styling cues. S&S Cycle created the Grand National slip-on muffler to perfectly complement this blend of tradition and technology using our advanced engineering experience and technology to enhance performance, sound, and overall riding experience. The Grand National slip-on is designed to optimize exhaust flow and give your Softail a distinct aggressive sound while staying true to its iconic roots.

1. Remove the muffler from the motorcycle you are working on following your factory service manual.
2. Remove the stock clamp from the muffler you removed and slide it over the new S&S muffler.
3. Install the muffler onto the header system and reuse the two socket head cap screws that were removed to fasten the muffler to the stock muffler bracket.
4. Torque the sockethead cap screws to 100 In-lbs.
5. Torque the muffler clamp to 40 ft-lbs.
6. Picture 1 illustrates the location of socket head cap screws and clamp.



Picture 1

7. Thoroughly clean the mufflers and exhaust system before starting the motorcycle. Any oil residue or finger prints on the chrome will cause permanent stains once the system heats up.
8. Check all mounting hardware to be sure it is tight before and after the first operation of motorcycle. Periodically, check tightness of all, mounting hardware.



**551-2440 MUFFLER, ASSEMBLY, GRAND NATIONAL, 4", BLACK, 2025 M8 SOFTAIL®, STANDARD CHASSIS**

Item #	Part #	Description	QTY
1	551-1889	SHELL, MUFFLER, 4", BLACK, 2025 M8 SOFTAIL®, STANDARD CHASSIS	1
2	551-0819	INSULATION, MUFFLER, PILLOW PACK, Ø3.8 OD X 14"	1
3	551-2447	BAFFLE, ASSEMBLY, MUFFLER, 4", 2.50" OD PERF X 2.5" INLET X 16.215"	1
4	551-0063	BAFFLE, MUFFLER, 4", BLACK, SAE J2825	1
5	551-0291	CAP, END, MUFFLER, GRAND NATIONAL, POWDERCOATED, 4", BLACK	1
6	500-0569	SCREW, SHC, HIGH TEMP LOCK PATCH, 10-32 X 3/4", STAINLESS STEEL	3
7	500-0441	SCREW, BHC, HIGH TEMP LOCK PATCH, 1/4-20 X 3/8", STAINLESS STEEL	2

**551-2441 MUFFLER, ASSEMBLY, GRAND NATIONAL, 4", CHROME, 2025 M8 SOFTAIL®, STANDARD CHASSIS**

Item #	Part #	Description	QTY
1	551-0977	SHELL, MUFFLER, 4", CHROME, 2025 M8 SOFTAIL®, STANDARD CHASSIS	1

# Safety and Warranty Info:

## DISCLAIMER:

S&S parts are designed for high performance, closed course, racing applications and are intended for the very experienced rider only. The installation of S&S parts may void or adversely affect your factory warranty. In addition such installation and use may violate certain federal, state, and local laws, rules and ordinances as well as other laws when used on motor vehicles used on public highways, especially in states where pollution laws may apply. Always check federal, state, and local laws before modifying your motorcycle. It is the sole and exclusive responsibility of the user to determine the suitability of the product for his or her use, and the user shall assume all legal, personal injury risk and liability and all other obligations, duties, and risks associated therewith.

\*Qualified manufacturer declared U.S. 50-State legal emissions compliant part on all 2025 Harley Davidson Street Bob, Low Rider S, Low Rider ST, Heritage Classic Softail Models.

## SAFE INSTALLATION AND OPERATION RULES:

Before installing your new S&S part it is your responsibility to read and follow the installation and maintenance procedures in these instructions and follow the basic rules below for your personal safety.

- Gasoline is extremely flammable and explosive under certain conditions and toxic when breathed. Do not smoke. Perform installation in a well ventilated area away from open flames or sparks.
- If motorcycle has been running, wait until engine and exhaust pipes have cooled down to avoid getting burned before performing any installation steps.
- Before performing any installation steps disconnect battery to eliminate potential sparks and inadvertent engagement of starter while working on electrical components.
- Read instructions thoroughly and carefully so all procedures are completely understood before performing any installation steps. Contact S&S with any questions you may have if any steps are unclear or any abnormalities occur during installation or operation of motorcycle with a S&S part on it.
- Consult an appropriate service manual for your motorcycle for correct disassembly and reassembly procedures for any parts that need to be removed to facilitate installation.
- Use good judgment when performing installation and operating motorcycle. Good judgment begins with a clear head. Don't let alcohol, drugs or fatigue impair your judgment. Start installation when you are fresh.
- Be sure all federal, state and local laws are obeyed with the installation.
- For optimum performance and safety and to minimize potential damage to carb or other components, use all mounting hardware that is provided and follow all installation instructions.
- Motorcycle exhaust fumes are toxic and poisonous and must not be breathed. Run motorcycle in a well ventilated area where fumes can dissipate.

## IMPORTANT NOTICE:

Statements in this instruction sheet preceded by the following words are of special significance.



### WARNING

Means there is the possibility of injury to yourself or others.



### CAUTION

Means there is the possibility of damage to the part or motorcycle.

### NOTE

*Other information of particular importance has been placed in italic type.*

*S&S recommends you take special notice of these items.*

## WARRANTY:

All S&S parts are guaranteed to the original purchaser to be free of manufacturing defects in materials and workmanship for a period of twelve (12) months from the date of purchase. Merchandise that fails to conform to these conditions will be repaired or replaced at S&S's option if the parts are returned to us by the purchaser within the 12 month warranty period or within 10 days thereafter.

In the event warranty service is required, the original purchaser must call or write S&S immediately with the problem. Some problems can be rectified by a telephone call and need no further course of action.

A part that is suspect of being defective must not be replaced by a Dealer without prior authorization from S&S. If it is deemed necessary for S&S to make an evaluation to determine whether the part was defective, a return authorization number must be obtained from S&S. The parts must be packaged properly so as to not cause further damage and be returned prepaid to S&S with a copy of the original invoice of purchase and a detailed letter outlining the nature of the problem, how the part was used and the circumstances at the time of failure. If after an evaluation has been made by S&S and the part was found to be defective, repair, replacement or refund will be granted.

## ADDITIONAL WARRANTY PROVISIONS:

- (1) S&S shall have no obligation in the event an S&S part is modified by any other person or organization.
- (2) S&S shall have no obligation if an S&S part becomes defective in whole or in part as a result of improper installation, improper maintenance, improper use, abnormal operation, or any other misuse or mistreatment of the S&S part.
- (3) S&S shall not be liable for any consequential or incidental damages resulting from the failure of an S&S part, the breach of any warranties, the failure to deliver, delay in delivery, delivery in non-conforming condition, or for any other breach of contract or duty between S&S and a customer.
- (4) S&S parts are designed exclusively for use in Harley-Davidson® and other American v-twin motorcycles. S&S shall have no warranty or liability obligation if an S&S part is used in any other application.

14025 Cty Hwy G

Viola, Wisconsin 54664

Phone: 608-627-1497 • Fax: 608-627-1488

Technical Service Phone: 608-627-TECH (8324)

Technical Service Email: [ssstech@sscycycle.com](mailto:ssstech@sscycycle.com)

Website: [www.sscycycle.com](http://www.sscycycle.com)