

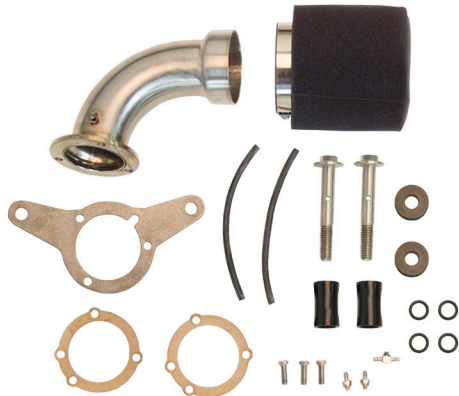


WWW.TWOBROS.COM

401 S. GRAND AVE., SANTA ANA, CA 92705 - (800) 211-2767

MOTO

1999 - 2017 DYNA
MOTO Intake w/Uni Filter Part # 034-376-03



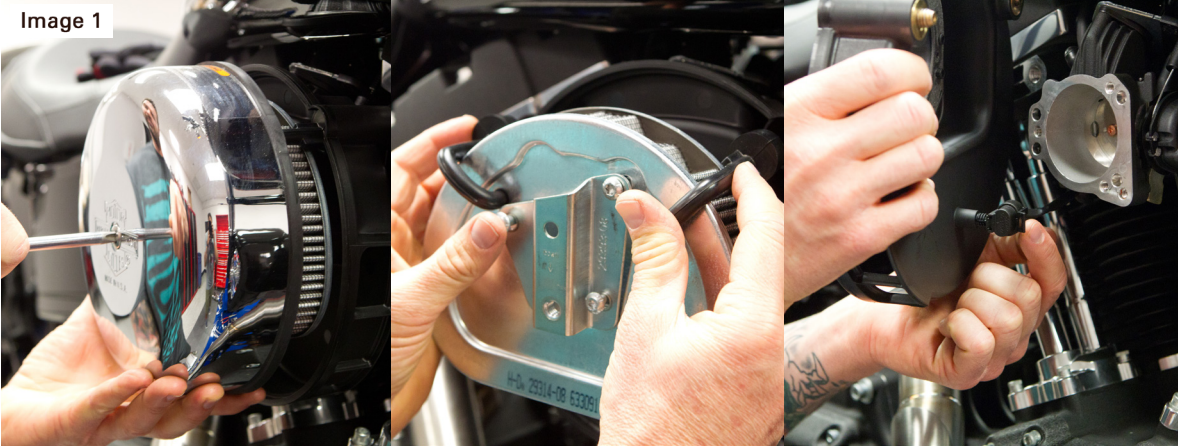
BILL OF MATERIALS

1	Moto Intake Body	Varies
1	Dyna Backing Plate	017C-224
1	Foam Filter	018-SP-FOAM
2	CV Gasket	017C-136
4	O-Ring Size 111	017C-111
2	Dyna Breather Spacer w/Counter Bore	017C-218
1	Buna Tubing 1 Foot	017C-219
3	SS Screw 1/4 - 20 x 3/4"	017C-226
2	Brass Barb 10 -32 Thread	017C-220
1	Brass T-Barb 10 - 32 Thread	017C-221
2	8mm Spacer	005-S-810
2	Breather Bolt	017C-117

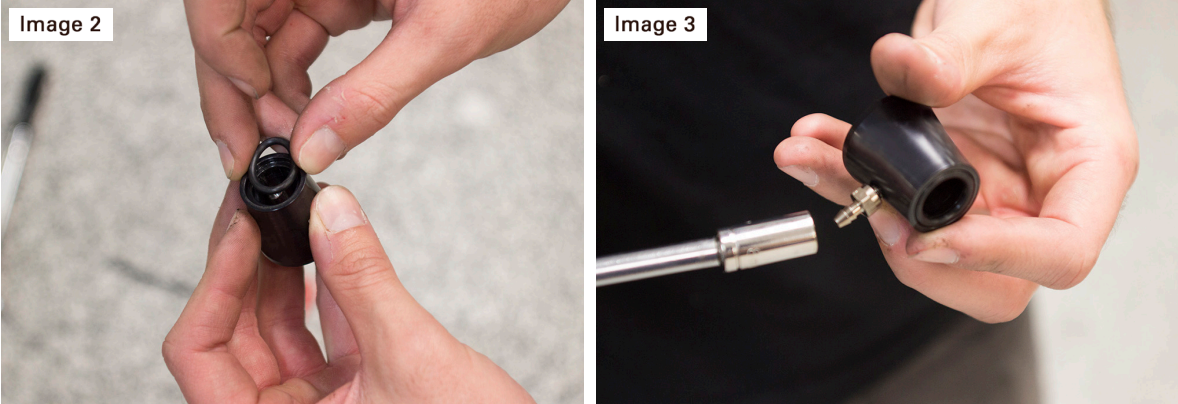


INSTALLATION INSTRUCTIONS

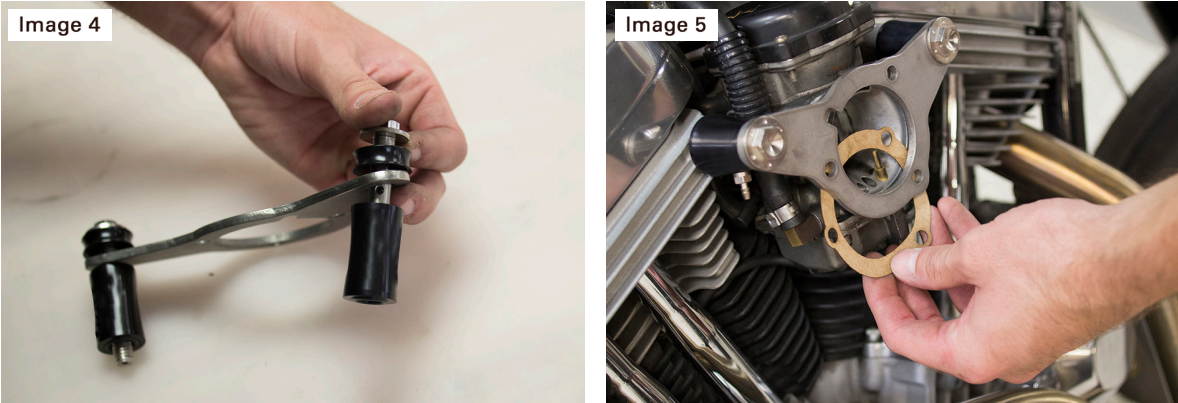
1. Make sure the motorcycle is completely cool before installation.
2. Remove the OEM intake. First remove the cover, then filter, and base plate. **(Reference image 1)**



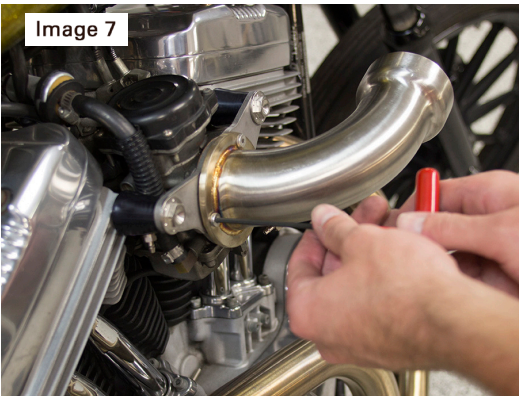
3. Locate your breather bolt spacers and install the supplied O-Rings and hose barb. **(Reference images 2 & 3)**



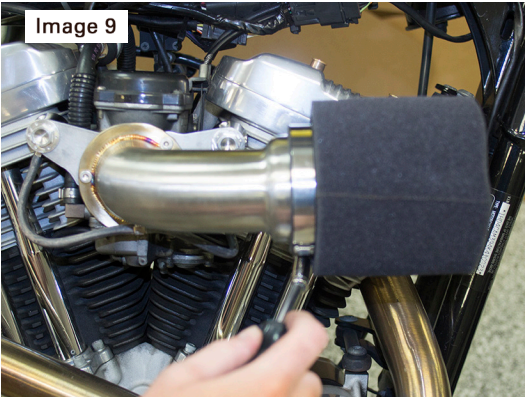
4. Slide the included breather bolts through the included spacers, TBR backing plate, and TBR spacers. **(Reference image 4)**
5. Install the TBR backing plate on the motorcycle along with one of the included gaskets. **(Reference image 5)**



6. Now install the intake piece onto the backing plate using the supplied 1/4 - 20 screws and second gasket. The order of parts and gaskets should be as follows: Throttle Body, Gasket, Backing Plate, Gasket, Intake. (Reference Images 6 & 7)



7. Screw the supplied T-Barb into the threaded hole in the bottom of the TBR intake body. Connect the T-Barb to the Breather Bolt Spacer Barbs using the supplied BUNA Tubing as shown. Simply cut the tubing to the correct size, about 6 inches. (Reference image 8)
8. Attach the included TBR Air Filter. (Reference image 9)



Care & Cleaning

Care & Cleaning

Keep system free of dirt and moisture. Store in a cool, dry place. Make sure vehicle is completely cool before maintenance.

Warranty Information

Two Brothers Racing products are intended for closed course competition purposes only, and therefore are sold "as is" without warranty. Two Brothers Racing specifically disclaims any warranties of merchantability or fitness for a particular purpose and disclaims all responsibility for consequential and incidental damages or any other losses arising from the use of these products or parts. Not tested for use with OEM or aftermarket accessories.

IMPORTANT - PLEASE READ CAREFULLY

Two Brothers Racing products are intended for closed course competition purposes only. We recommend that this performance part be installed by a qualified motorcycle technician. If you have any doubts as to your ability to install this performance part, please consult with your local motorcycle dealer. Read all instructions first before starting installation. Make sure the motorcycle and exhaust system are completely cool before starting the installation. Also, make sure the bike is secure on a center stand or ideally a service lift during installation. Be sure to save all stock components for possible use later.



BILL OF MATERIALS

1	Moto Intake Body	Varies
1	Dyna Backing Plate	017C-224
1	Foam Filter	018-SP-FOAM
2	CV Gasket	017C-136
4	O-Ring Size 111	017C-111
2	Dyna Breather Spacer w/Counter Bore	017C-218
1	Buna Tubing 1 Foot	017C-219
3	SS Screw 1/4 - 20 x 3/4"	017C-226
2	Brass Barb 10 -32 Thread	017C-220
1	Brass T-Barb 10 - 32 Thread	017C-221
2	8mm Spacers	005-S-810
2	Breather Bolts	017C-117