



# Adjustable Bagger Brake Arm Instructions

For 2014 to Current FLHT / FLHR / FLHX / FLTRX / FLTRU / FLHTCUTG

**This install must be done by a certified/professional technician**

BEFORE TEST RIDING YOUR BIKE  
VERIFY YOUR BRAKES PROPERLY WORK.

\*Refer to Harley-Davidson Service Manual for all TQ Specs.

1. Remove right side floorboard and brackets off of the frame using 5/16 hex head allen.
2. It is recommended to remove front exhaust pipe heat shield for added clearance.
3. Stock arm is connected by a clevis pin with a cotter pin. Be sure to remove the cotter pin and then the clevis pin. If more clearance is needed to push the clevis pin, you can remove the master cylinder mounting bolts using a 1/4 hex head drive to move the master cylinder towards the front of the bike.
4. Remove stock brake arm nyloc 5/8 nut, washer, and O-Ring.
5. Once stock brake arm is removed, you are going to remove and reuse the stock plastic bushings. (HD Part # 11000050) We used a mallet and 5/8 deep socket to press them out.
6. Press the plastic bushings into your Thrashin Brake Arm Hub. (See Page 2 Picture B)
7. Now you are going to choose the setting you would like your brake arm in. Refer to page 2, image A to get an understanding of how to set your brake arm.
8. Bolt your Clevis mount to the Brake Arm Hub with the 1/4-20 7/8 Hex Head Allen at the marked settings that best fits your preference. (See Page 2 Image C)
9. Grease the stock Harley Brake Arm Post, install the stock O-Ring on the post, then slide your Thrashin Brake Hub on the post. Put the stock clevis pin and cotter pin back in. Replace cotter pin if needed.
10. After the clevis pin is installed, put the stock O-Ring(HD Part # 11900021), Metal Washer(HD Part # 6416), and then the 5/8 Nyloc Nut Back on, tighten to HD TQ Specs. (Tight) (See Page 2 Image D)
11. Reinstall the Master Cylinder using the 1/4 Hex Head Drives, using blue thread lock.
12. Now that your clevis mount is set on the hub and mounted to your bike and brake reservoir, your brake arm will only locate to 3 of the 9 threaded holes on the hub. Using the 3 supplied 1/4-20 x 1-1/4" bolts, mount your brake arm on the hub using blue thread lock.
13. Reinstall your floorboard using the 5/16 hex head allens and blue thread lock.
14. Be sure to pump up your brakes, verify clearance, and ensure brakes are working properly before you ride the bike.



# Adjustable Bagger Brake Arm Instructions

## IMPORTANT NOTICE:

Damage to THRASHIN SUPPLY® COMPANY products due to incorrect installation will void manufacturer's warranty.

## WARRANTY:

THRASHIN SUPPLY® COMPANY (TSC) All parts are guaranteed to the original purchaser to be free of manufacturing defects in materials and workmanship for a period of

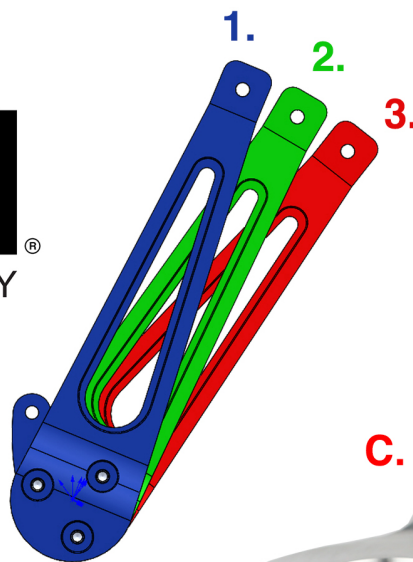
twelve (12) months from the date of purchase. Merchandise that fails to conform to these conditions will be repaired or replaced at TSC'S option if the parts are returned to TSC by the purchaser within the (12) month warranty period. In the event warranty service is required, the original purchaser must notify TSC of the problem immediately. Some problems may be rectified by a telephone call and need no further action. A part that is suspect of being defective must not be replaced without prior authorization from TSC. If it is deemed necessary for TSC to make an evaluation to determine whether the part was defective, it must be packaged properly to avoid further damage, and be returned prepaid to TSC with a copy of the original invoice of purchase and a detailed letter outlining the nature of the problem, how the part was used and the circumstances at the time of failure. After an evaluation has been made by TSC and the part was found to be defective, repair, replacement or refund will be granted.

## ADDITIONAL WARRANTY PROVISIONS:

TSC shall have no obligation in the event an TSC part is modified by any other person or organization, or if another manufacturer's part is substituted for one provided by TSC. TSC shall have no obligation if an TSC part becomes defective in whole or in part as a result of improper installation, improper break-in or maintenance, improper use, abnormal operation, or any other misuse or mistreatment. TSC shall not be liable for any consequential or incidental damages resulting from the failure of an TSC part, the breach of any warranties, the failure to deliver, delay in delivery, delivery in non-conforming condition, or any other breach of contract or duty between TSC and the customer.

The installation of parts may void or otherwise adversely affect your factory warranty. In addition, such installation and use may violate certain federal, state and local laws, rules and ordinances as well as other laws when used on motor vehicles operated on public highways, especially in states where pollution laws may apply. Always check with federal, state, and local laws before modifying your motorcycle. It is the sole and exclusive responsibility of the user to determine the suitability of the product for his/her use, and the user shall assume all legal, personal injury risk and liability and all other obligations, duties and risks associated therewith. Our parts are intended for experienced riders only. THRASHIN SUPPLY® COMPANY reserves the right to change prices and/or discounts without notice and to bill at the prevailing prices at the time of shipments.

The words Harley®, Harley-Davidson® and H-D® and all H-D® part numbers and model designations are used in reference only. THRASHIN SUPPLY COMPANY is in no way associated with, or authorized by Harley-Davidson Motor Co®. to manufacture and sell any of the engine parts described in this instruction sheet.



**A.**



1 Mark  
Stock  
Setting

2 Marks  
Mid  
Setting

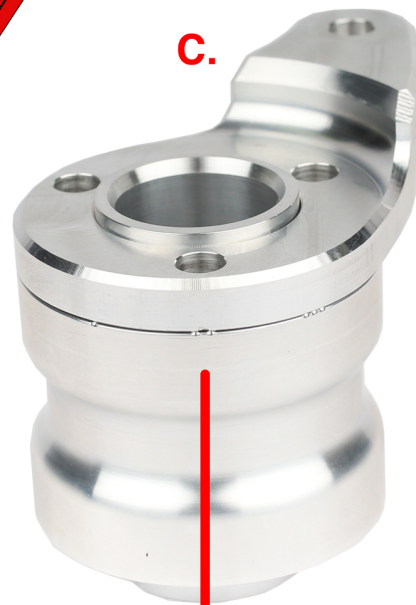
3 Marks  
Lowest  
Setting

**B.**



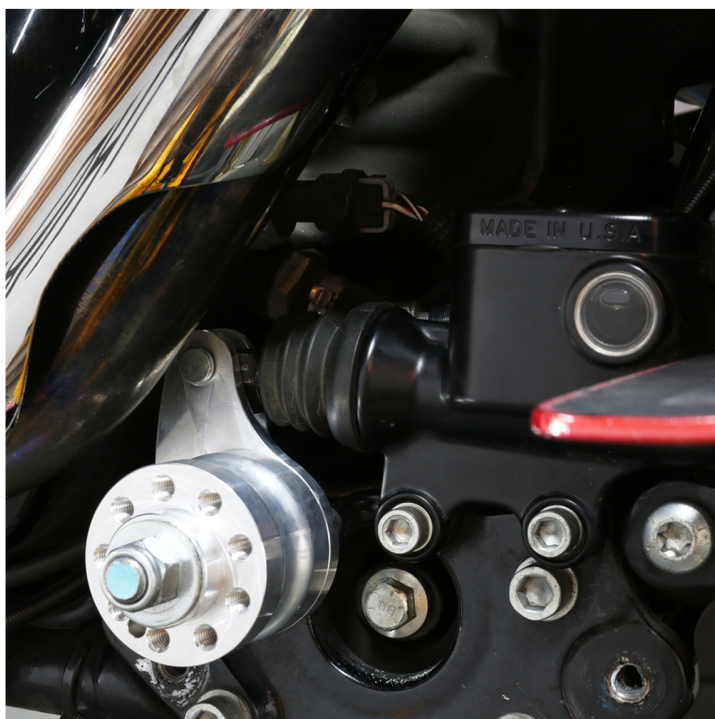
Stock Plastic Bushings

**C.**



Line up the one dot that is on the back of the clevis mount to the mark setting you prefer.

**D.**



**E.**

