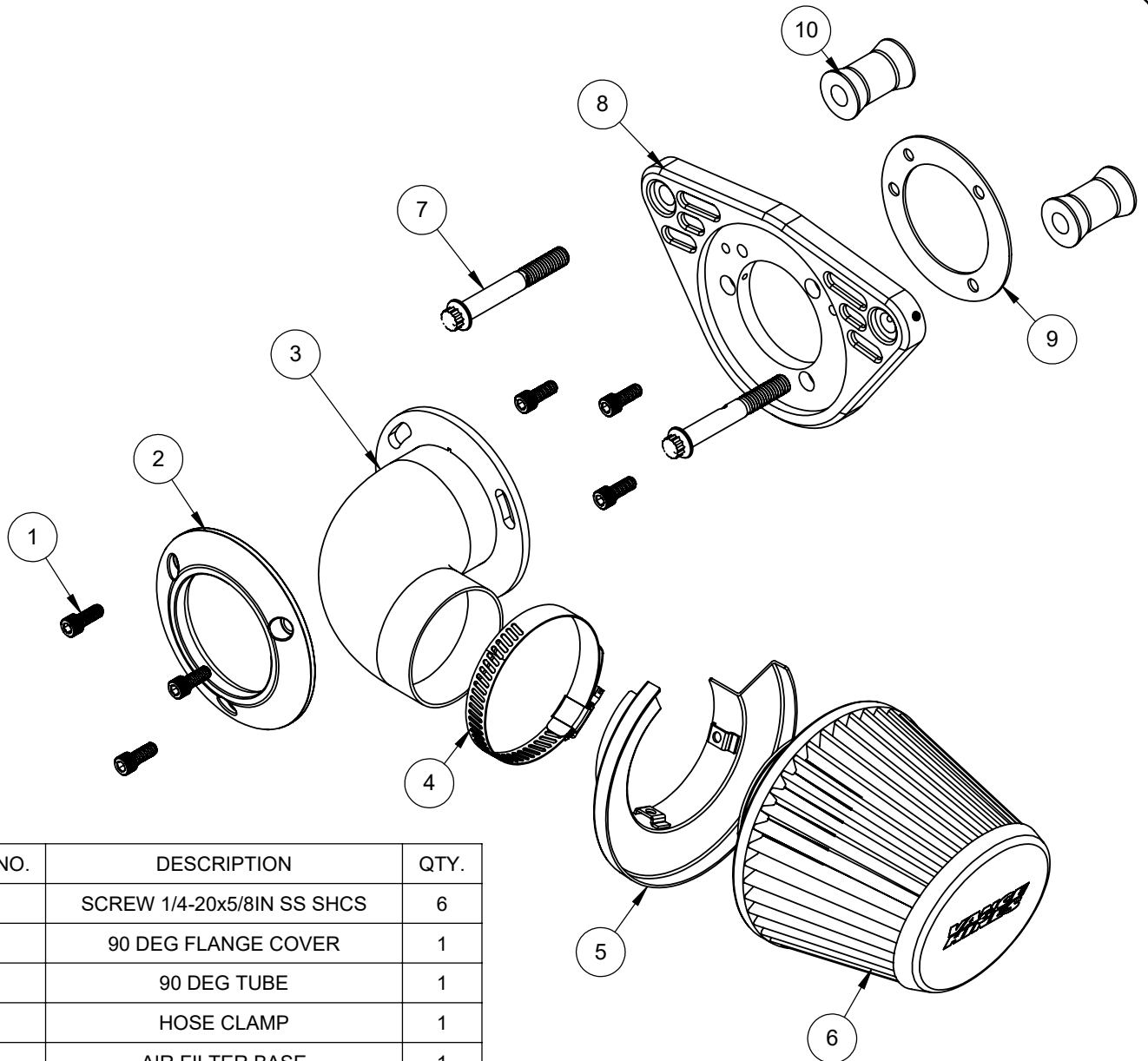


INSTALLATION INSTRUCTIONS: MULTIFIT VO2 FALCON AIR INTAKE PART# 41067/71067/41057/40053

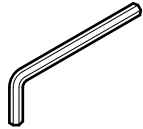
Congratulations, you have purchased the finest air intakes available for your motorcycle. Your Vance & Hines intake is designed and crafted for performance, quality, and style. Please follow the instructions below, check air intake system for missing or damaged parts and if you need any assistance please contact our technical support line (562) 921-7461.

Exempt from emissions tampering regulations under CARB EO# D-632-6 for 2002-2007 Harley-Davidson Touring models, 2007-2015 Harley-Davidson Softail models and 2007-2017 Harley-Davidson Dyna models.

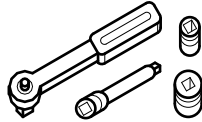


ITEM NO.	DESCRIPTION	QTY.
1	SCREW 1/4-20x5/8IN SS SHCS	6
2	90 DEG FLANGE COVER	1
3	90 DEG TUBE	1
4	HOSE CLAMP	1
5	AIR FILTER BASE	1
6	AIR FILTER	1
7	12 POINT BREATHER BOLTS	2
8	VO2 90 BACKING PLATE	1
9	THROTTLE BODY GASKET	1
10	STAND OFFS	2

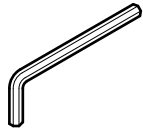
TOOLS REQUIRED



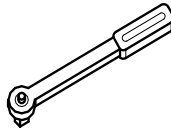
T27 Torx Wrench



**1/4" or 3/8" Drive Ratchet
7mm, 7/16" Hex Socket
3/8" 12 Point Socket**

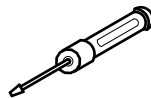


**Allen Wrenches: 3/16"
and 5/16"**



**Inch-Pound Torque
Wrench**

Loctite 243 (blue)



**Phillips Screwdriver
7mm Nut Driver**

OEM SYSTEM REMOVAL

1. Take off the air filter cover by removing the 5/16" x 1/2" OE button head cap screw in the center
2. This will expose the filter element, which is then removed by taking out the three Torx head cap screws.
3. Also remove the breather hoses from the cylinder head breather bolts by gently pulling on them.
4. Remove the three bolts that secure the backing plate to the carburetor/throttle body and the two breather bolts that secure it to the cylinder heads.
5. Now remove the backing plate and gasket, on FI models the wiring mount clip should be carefully pulled out of the plastic housing. **NOTE:** Be sure that the gasket surface is clean and dry and that no gasket material remains stuck to it.

V&H AIR INTAKE INSTALLATION

1. For a clear understanding of this installation, it is best to refer to the exploded view diagram while reading these instructions.
2. When installing or servicing the air cleaner, apply Loctite 243 (blue) to threads of all fasteners.
3. Sandwich the throttle body gasket (9) between the air intake spacer (8) and the throttle body using three 1/4-20 x 5/8" screws (1). **NOTE:** Do not tighten at this time.
4. Install standoffs (10) between cylinder head and the air intake spacer (8) using two 12 point breather bolts (7). Tighten to 84-120 in-lbs. NOTE: Standoffs are symmetrical and can be installed in either direction. (See Fig. 1)

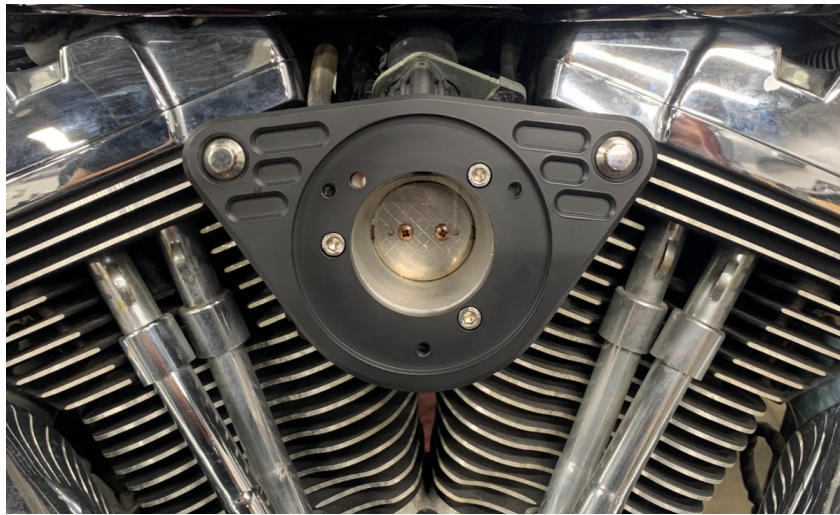


Figure 1

5. Tighten three 1/4"-20x5/8" screws to 40-60 in-lbs. (See Fig. 1)
6. Slide cover ring (2) on to the 90 degree tube (3). Then use the three 1/4-20 x 5/8" (1) screws to mount cover ring (2) and 90 degree tube (3) on to the air intake spacer (8). Tighten screws while aligning the 90 degree tube (3) parallel with the ground. (See Fig. 2)



Figure 2

7. Install hose clamp **(4)** through the clips of the air filter base **(5)**. Clamp and base opening should be to the inside with screw head facing down for access. *NOTE: Gently, use flat head screw driver to slightly pry open the clips on the air filter base **(5)** to allow the hose clamp to go through, as needed. (See Fig. 3)*



Figure 3

8. Install air filter base **(5)** and hose clamp **(4)** on to the base of the air filter.
9. Install air filter **(6)** on to the 90 degree tube. Clock air filter **(6)** and air filter base **(5)** as shown. (See Fig. 4)



Figure 4

10. Tighten hose clamp until air filter is secure from sliding off 90 degree tube. Do not over tighten.

Emissions Notice:

In California, in order to meet Air Resources Board emissions requirements, certain aftermarket part applications have been identified as replacements, and others have received ARB Executive Orders. All other emissions related aftermarket parts are for competition use only. A list of replacement parts and EO parts, and corresponding fitment is provided at vanceandhines.com/California.

Warranty:

All Vance & Hines products are warranted against defects in material and workmanship for a period of 90 days. This warranty does not cover discoloration or rust. This warranty shall be limited to the repair or replacement of the product, which may be proven defective under normal use. Vance & Hines will not warranty any system that has been abused, misused, improperly installed or modified.

Dealers or distributors are not authorized to make dispositions binding upon Vance & Hines. Vance & Hines will not be responsible for any labor charges incurred in removing or replacing any system under warranty. A return authorization number and a copy of the original purchase invoice must accompany all returns. Parts returned without a return authorization may be refused.

13861 ROSECRANS AVENUE / SANTA FE SPRINGS, CA 90670
SALES: (562) 921-5388
TECHNICAL: (562) 926-5291
FAX: (562) 802-0110

vanceandhines
.com